



INNOVATIONS 25.2

Take into account that this document is only a summary of the most relevant information of this new version. For further information, please visit Jaltest Report.

BRANDS AND MODELS

Some of the new models and brands in Jaltest are listed below.

TRACTOR

This version includes new brands of tractors: **LOVOL**, **PRONAR** and **SOLIS**.

KIOTI

HX Series

LANDINI

6 V-Shift Series

MAHINDRA

5100 Series

NEW HOLLAND

T5S Series, engine: Tier 5/Stage V

SELF-PROPELLED AND TRAILING IMPLEMENT

Two new brands of self-propelled and trailing implements have also been added: **GRILLO** and **HORSCH**.

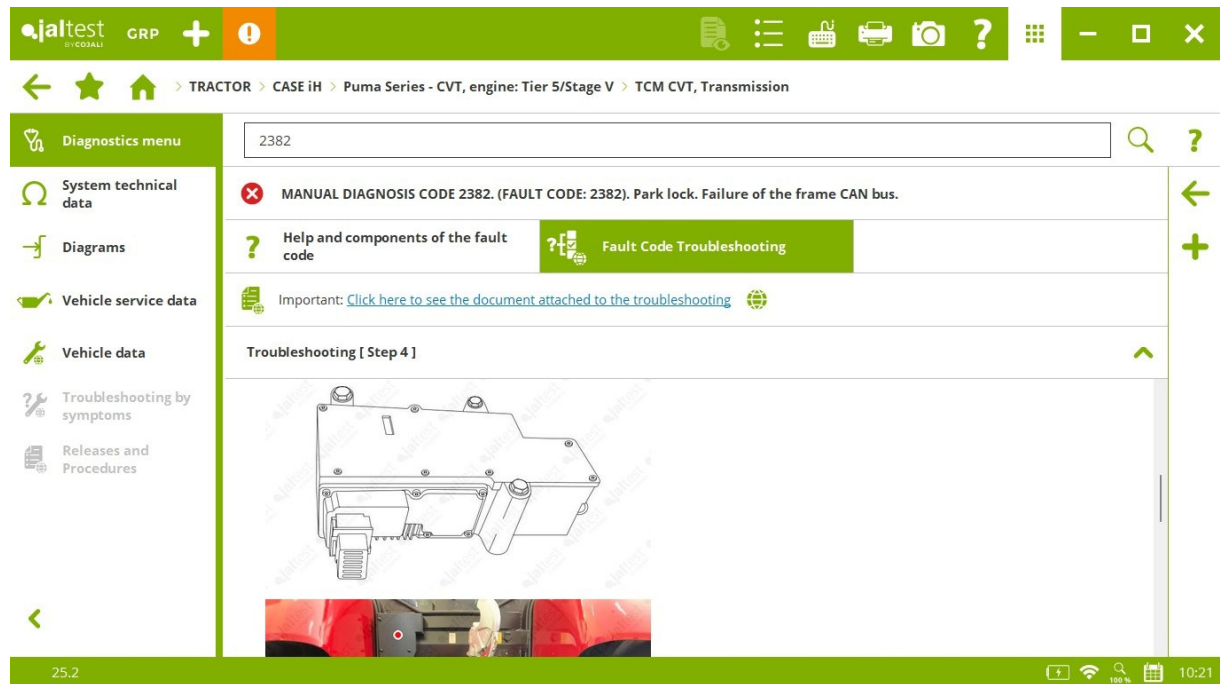
DIAGNOSTICS AND SYSTEMS

There are new technical information and **SMART guides** by symptom and by the most common fault codes in the workshop thanks to the communication channels with clients such as the technical support offered by the project, training, Jaltest Feedback and “Product improvement” option.

TRACTOR

It is important to note new fault code SMART guides in **TCM CVT** transmission, which is present on many models of **CNH** group tractor brands, and fault code SMART guides in **EHR** hydraulic control system and **TRANS (Sauer Danfoss)** transmission, equipped in **LANDINI** models.

Fault code SMART guides in **LANDINI Cluster** instrument cluster systems.



In general, extended manual diagnostics in several models of different brands such as **CASE iH**, **New HOLLAND** and **STEYR**, among others.

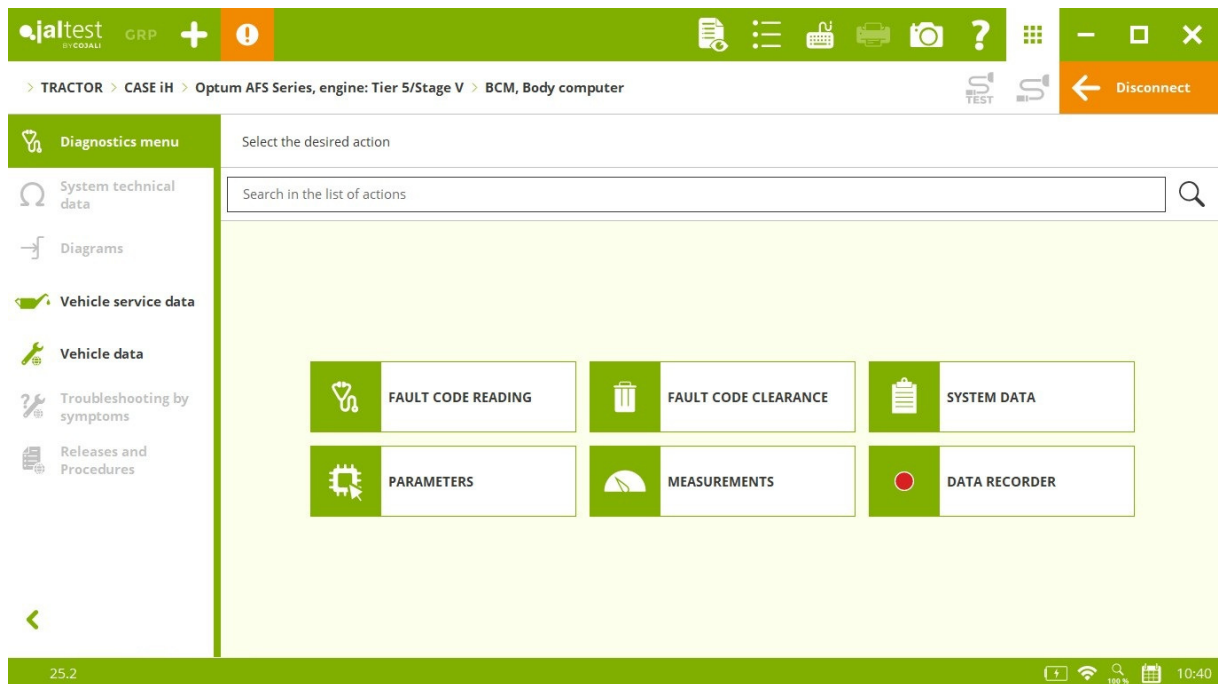
ARBOS

VCU central computer, parameter setting in **4080 E, engine: Interim Tier 4/Stage IIIB**, **5130, engine: Final Tier 4/Stage IV** and **7240, engine: Tier 5/Stage V**, among others.

CASE iH

⊕ **ACM** electronic module in **Farmall V/N/F/CL Series** models, **engine: Tier 5/Stage V** and **Quantum V/N/F/CL Series, engine: Tier 5/Stage V**.

BCM central computer, parameter setting in **Optum AFS Series, engine: Tier 5/Stage V**.



FPT engines, engine technical data and maintenance services in **Farmall V/N/F/CL Series** models, **engine: Tier 5/Stage V** and **Luxxum Series, engine: Tier 5/Stage V**, among others.

Wiring diagram configurations in **TCM** transmission in several models, among which **Puma Series - 18/19x6 Semi Power Shift (Armrest) (TMR), engine: Final Tier 4/Stage IV**, among others.

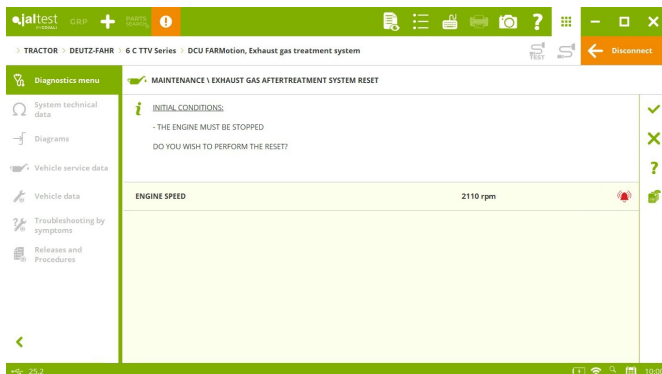
CLAAS

- ⊕ **SFA** suspension control system in **Arion 4X0 (A32/A43)** model, **engine: Final Tier 4/Stage IV**.
- ⊕ **TR1** transmission in **Arion 4X0 (A52/A53)** model, **engine: Final Tier 4/Stage IV**.
- ⊕ **TCU** transmission and **DSB** instrument cluster in **Nexos A67/A69/A70/A71** model.

TR1 transmission, technical release of the transmission calibration procedure in **Arion 4X0 (A52/A53)** model, **engine: Final Tier 4/Stage IV**.



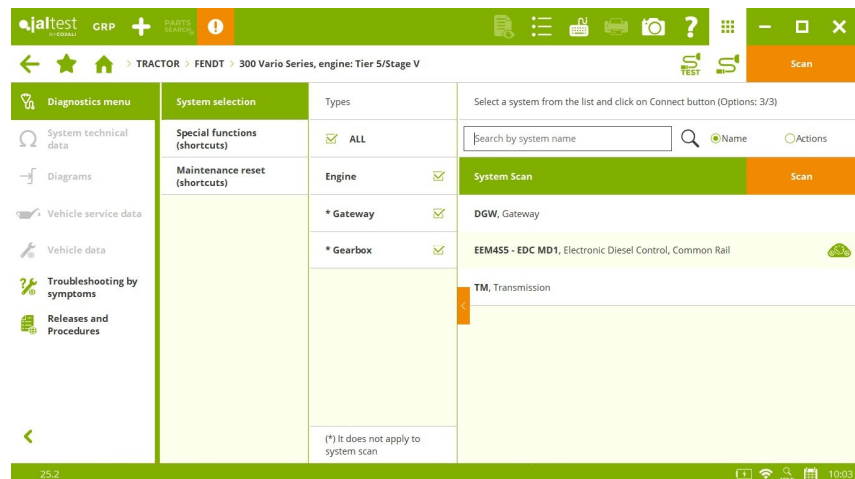
DEUTZ-FAHR



DCU **FARMotion** exhaust gas aftertreatment system, AdBlue/DEF module check and system maintenance reset in **4 E Series**, **5 TTV Series** and **Agroplus 300-400 F Series** models, among others.

FENDT

⊕ **TM** transmission and **DGW** gateway in **300 Vario Series** model, **engine: Tier 5/Stage V**.



JOHN DEERE

⊕ **FCC** central computer, **EIC** anti-theft system and **MFC** electronic module in **5ML Series** model.

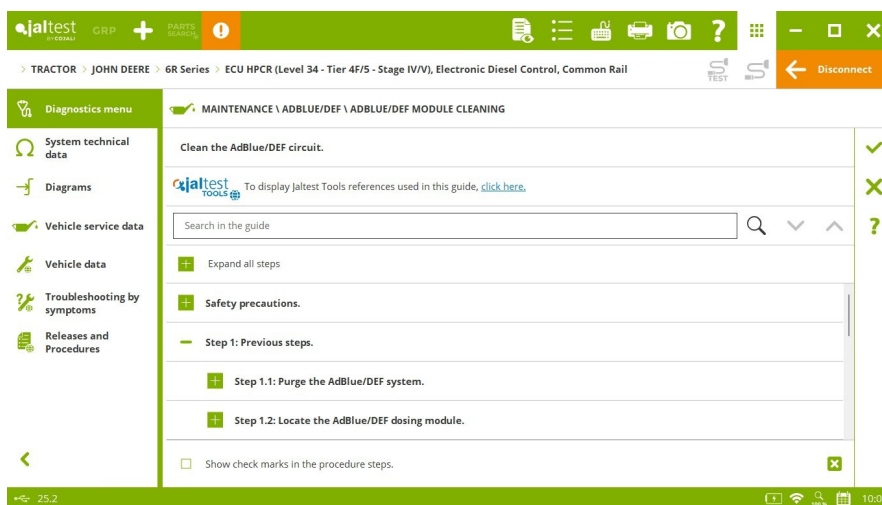
⊕ **HVI** hydraulic system in **5ML**, **6M** and **6R Series** models.

⊕ **TEC** electronic module in **7R** and **8R Series** models.

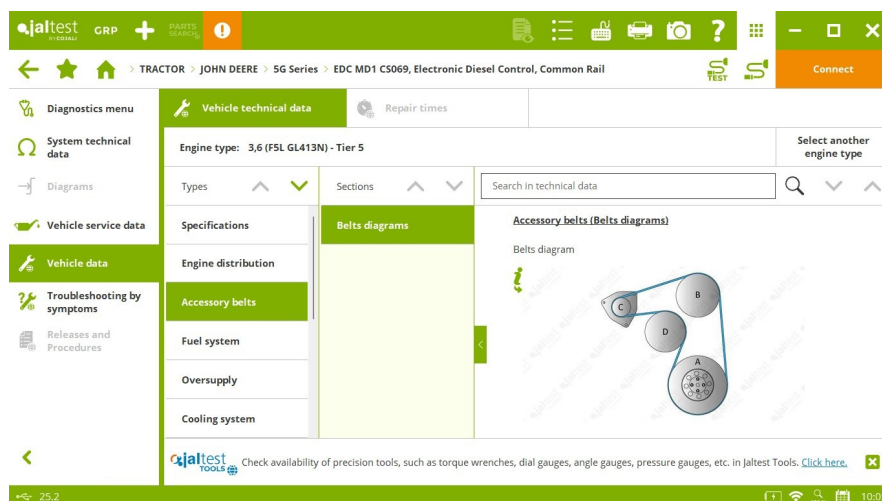
TEC electronic module, configuration of the implement lights in **6R Series** model.

JOHN DEERE EDC Level 33 and **EDC Level 34** engine control systems, maintenance of the AdBlue/DEF module cleaning.

FPT EDC MD1 CS069 engine control system, technical data and maintenance services in **5G Series** model.

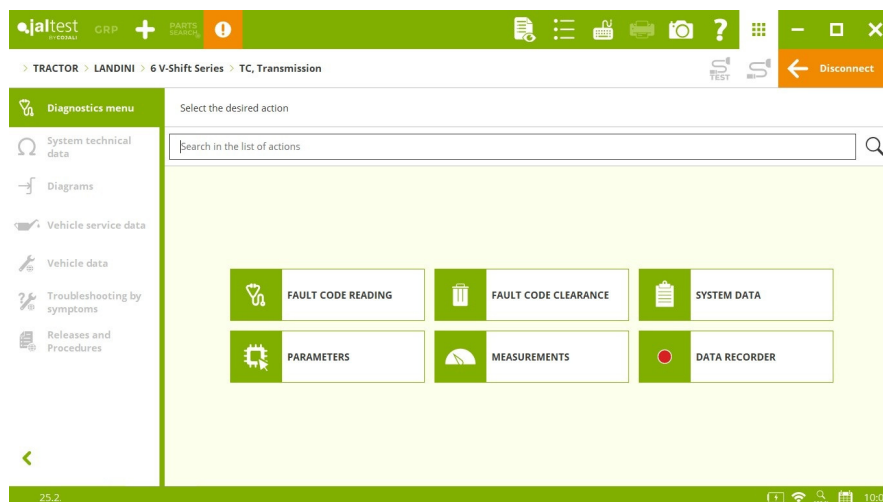


Wiring diagram configuration in **ATC** climate control system in **6R Series** model.



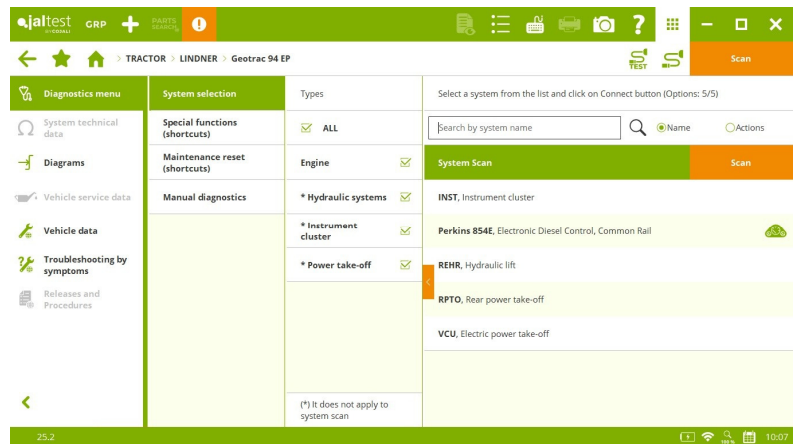
LANDINI

- ⊕ **TC** transmission in **6 V-Shift Series** model.
- ⊕ **EHC** hydraulic system in **5 Series** model, engine: Tier 5/Stage V.



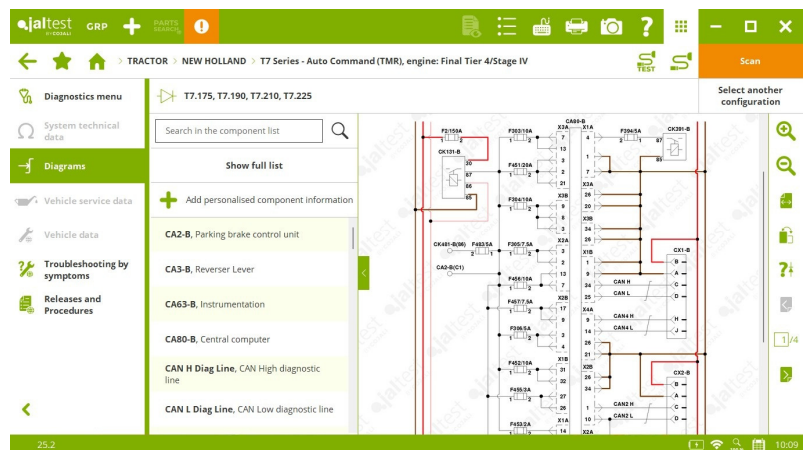
LINDNER

- ⊕ **INST** instrument cluster in **Geotrac 64 EP** and **Geotrac 74 EP** models, among others.
- ⊕ **REHR** hydraulic system in **Geotrac 84 EP** and **Geotrac 94 EP** models, among others.
- ⊕ **RPTO** power take-off control system and **VCU** central computer also for several **Geotrac** models.

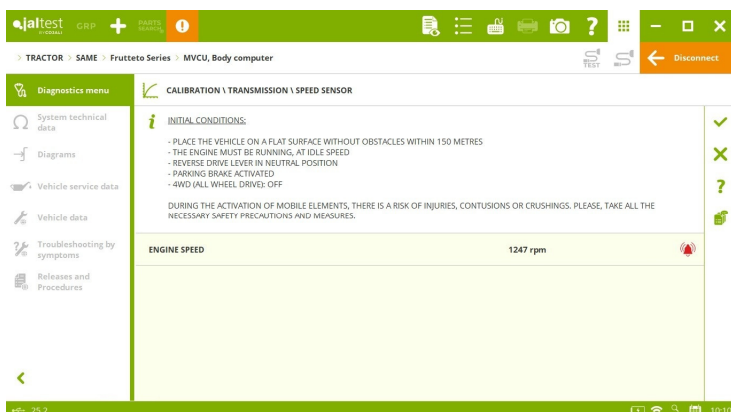


NEW HOLLAND

Wiring diagram configurations in **TCM CVT** transmission in **T7 Series - Auto Command (TMR)** model, **Final Tier 4/Stage IV engine**, among others.



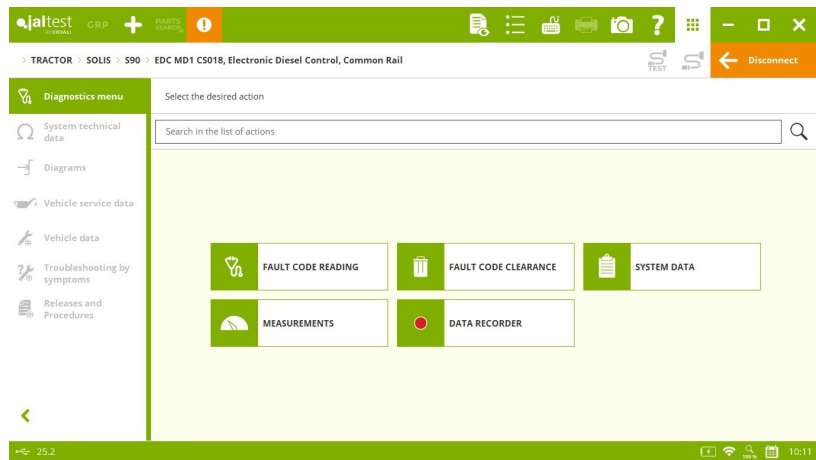
SAME



MVCU central computer, parameter setting, clutch check and transmission calibration in **Frutteto Series** and **Spark Series** models, among others.

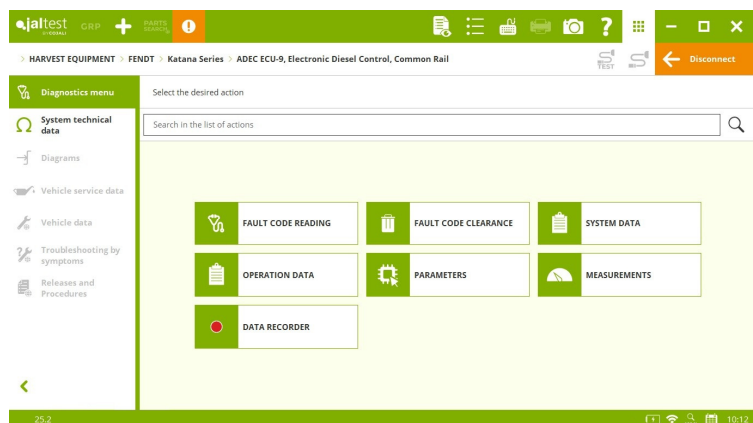
SOLIS

- ⊕ **SONALIKA EDC MD1 CS018** engine control system in **S90** model.



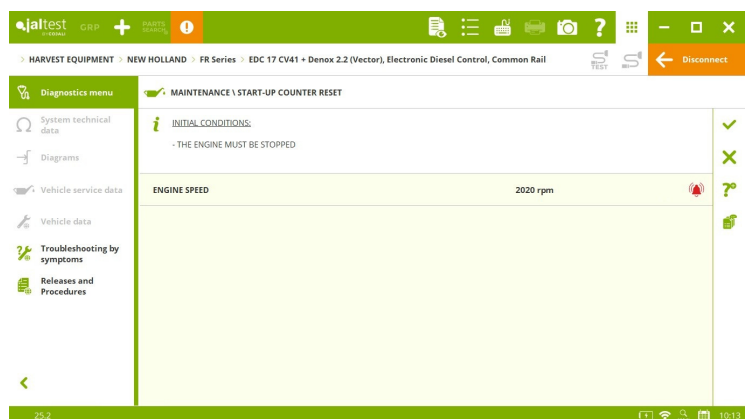
HARVEST EQUIPMENT FENDT

- ⊕ **MTU ADEC ECU-9** engine control system in **Katana Series** model.



NEW HOLLAND

- FPT EDC 17 CV41 + Denox 2.2 (Vector)** engine control system, reset of the vehicle start counter in **FR Series** model.



SELF-PROPELLED AND TRAILING IMPLEMENT

AGRIFAC

⊕ **CUMMINS B4.5/6.7 CM2350** engine control system in **Condor V** model.

