



## INNOVATIONS 25.1

# SOFTWARE INNOVATIONS

## SPARE PARTS SEARCH MODULE

This new additional module provides quick and easy access to spare parts from multiple commercial vehicle brands by facilitating the search, selection and creation of a list of spare parts through a centralised platform.

Users can access the information by the vehicle chassis number, ensuring accurate and efficient selection. Since it is integrated in Jaltest, the VIN is automatically detected if connected to the vehicle. Otherwise, this must be done manually.

In this way, the workshop is guaranteed to acquire the spare part compatible with the vehicle while optimising the process, reducing waiting times and improving the efficiency of spare parts management.

**Spare Parts**

jaltest | Spare Parts  
Powered by YQ Service & OEM

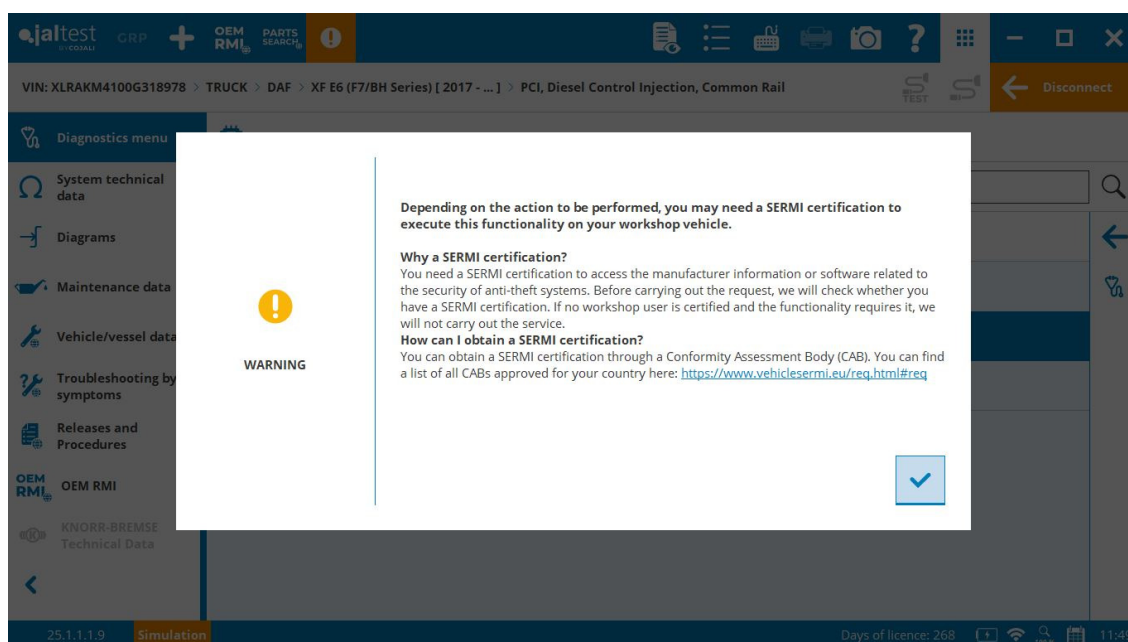
WMA05XZZ1CM587868 > Categories > exhaust system > 150172804, urea mixer

Position	Reference	Quantity	Designation	Additional information
1	51152305019	1	urea mixer	
2	51152400107	1	fish plate	2 holes
3	06674190004	1	profiled clamp	142X25-W4-QRC
3	06674349144	1	profiled clamp	40X20X144-W4-S
4	51930300036	1	sound absorber	
5	51152400037	1	bracket	for: heat protection plate
6	06032168303	2	hex flange bolt	M8X16-10.9-MAN183-B1
7	06150130411	1	washer	8X16X1,6-200HV-MAN183-B1
8	06032168605	2	hex flange bolt	M14X25-10.9-MAN183-B1
9	51152150060	1	heat protection plate	
10	06032168303	2	hex flange bolt	M8X16-10.9-MAN183-B1
11	51974010557	1	cable binder	4.7X202-PA4.6-GR/SW

- An access to the list of **ADDITIONAL MODULES** has been added to the main menu so that all users can consult the additional modules available.

## OTHER SOFTWARE INNOVATIONS

- Indication of functionalities added under **SERMI legislation**. SERMI certificate is required to access certain functionalities of repair and maintenance (RMI) related to vehicle safety. Coverage is currently available subject to having this certificate in DAF brand.



- Technical information related now also to the **components of the diagram by model**. Information available with the subscription of the new technical information module 'Jaltest INFO Plus'.
- During the connection to a system, the possibility of guiding the user to a specific action such as the calibration of the control unit is enabled, in the event that during the connection it is detected that the system is out of calibration.
- Access to the **manual diagnostics** process is enabled **from troubleshooting guides**.
- Possibility of relating videos to particular fault codes. This allows a video considered of interest to be related to a specific fault code that can be useful in future diagnostics processes.
- Display of brands and models offered by Jaltest coverage in its different modules, even without a licence, in order to easily consult the possible coverage to be subscribed.
- Now it is possible to accept the third-party data transfer during the installation process of Jaltest Diagnostics software in order to **create new business opportunities for your workshop**.
- Finally, as a remarkable feature, since 25.1 version Jaltest offers the possibility of subscribing a new module and vehicle licence in its equipment, **Jaltest GSE**, in order to provide diagnostics coverage to airport equipment and vehicles.

Take into account that this document is only a summary of the most relevant information of this new version. For further information, please visit Jaltest Report.

# BRANDS AND MODELS

---

Some of the new models and brands of this version are listed below. It is important to note HINO and ISUZU brands from Japanese market.

## TRUCK

### BYD

8Y

### DAF

XB E6 (F3/CD) Series

### VOLVO

VM 290

VM 350

## BUS

### BYD

D9W

K9UD

### COBUS

2700

3000

### HINO

RM280 Euro 4

### MITSUBISHI FUSO

Aero Ace/Queen

# LIGHT COMMERCIAL VEHICLE

## CITROËN

Jumper 2.2 BlueHDi, engine: 46356294/46358928/46356723 (2024 - ...)

## FIAT

Ducato MCA [290/295], engine: 46356294/46356723 (2024 - ...)

E-Ducato MCA [290/295] (2024 - ...)

## FORD

F-800, engine: Cummins (1992 - 2000)

## NISSAN

Townstar EV [XFKE], engine: 5AQ (2022 - ...)

## OPEL

Movano 2.2 BlueHDi [X250], engine: 46356294/46358928/46356723 (2024 - ...)

## PEUGEOT

Boxer 2.2 BlueHDi [XE], engine: 46356294/46358928/46356723 (2024 - ...)

## RENAULT

Kangoo E-Tech [XFKE], engine: 5AQ (2022 - ...)

## TOYOTA

Proace Max 2.2 BlueHDi, engine: 46356294/46358928/46356723 (2024 - ...)

## VAUXHALL

Movano 2.2 BlueHDi [X250], engine: 46356294/46358928/46356723 (2024 - ...)

# DIAGNOSTICS AND SYSTEMS

## TRUCK

Generally, in heavy commercial vehicles, 12V battery replacement procedures, developed by Cojali and sponsored by **VARTA**.

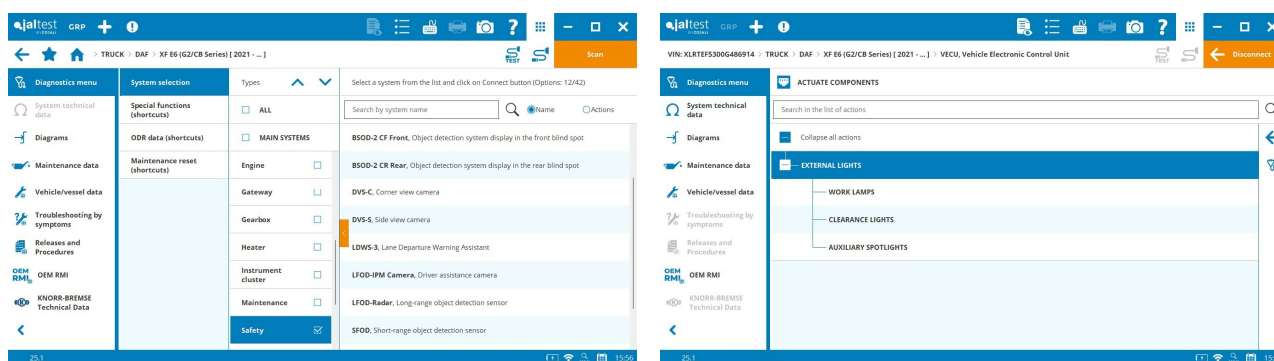
### DAF

The **GSR II regulation** includes the introduction in vehicles of short-range detection systems, blind spot control and driver assistance cameras to improve safety in manoeuvres and reduce accidents.

New systems related to this regulation are developed for the diagnostics process of DAF vehicles in **XB, XD, XF** and **XG/XG+ Euro 6** models.

- ⊕ **BSOD-2** blind spot detection sensor.
- ⊕ **SFOD** short-range object detection sensor.
- ⊕ **LFOD-IPM Camera** driver assistance camera.
- ⊕ **VECU-3** vehicle control unit.

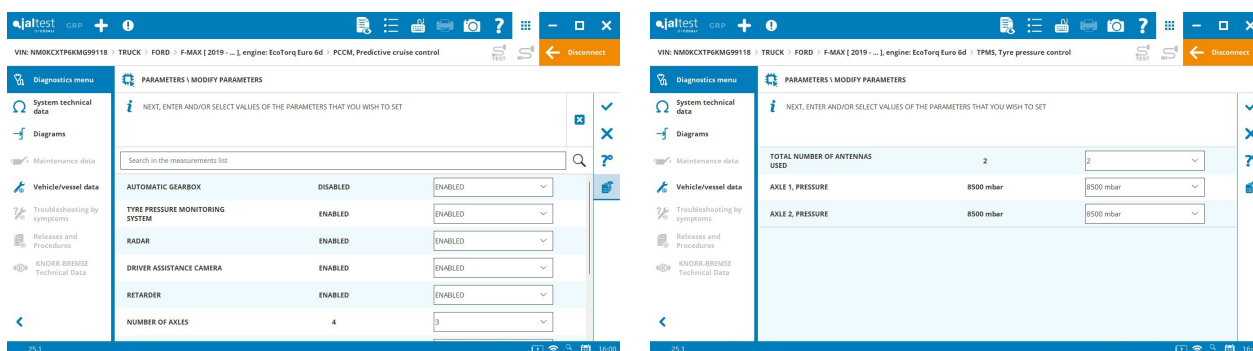
New activations of interior and exterior lighting elements such as emergency lighting or high-beam lights are added in the **VECU** system in **XF and XG E6 [2021 - ...]** models.



### FORD

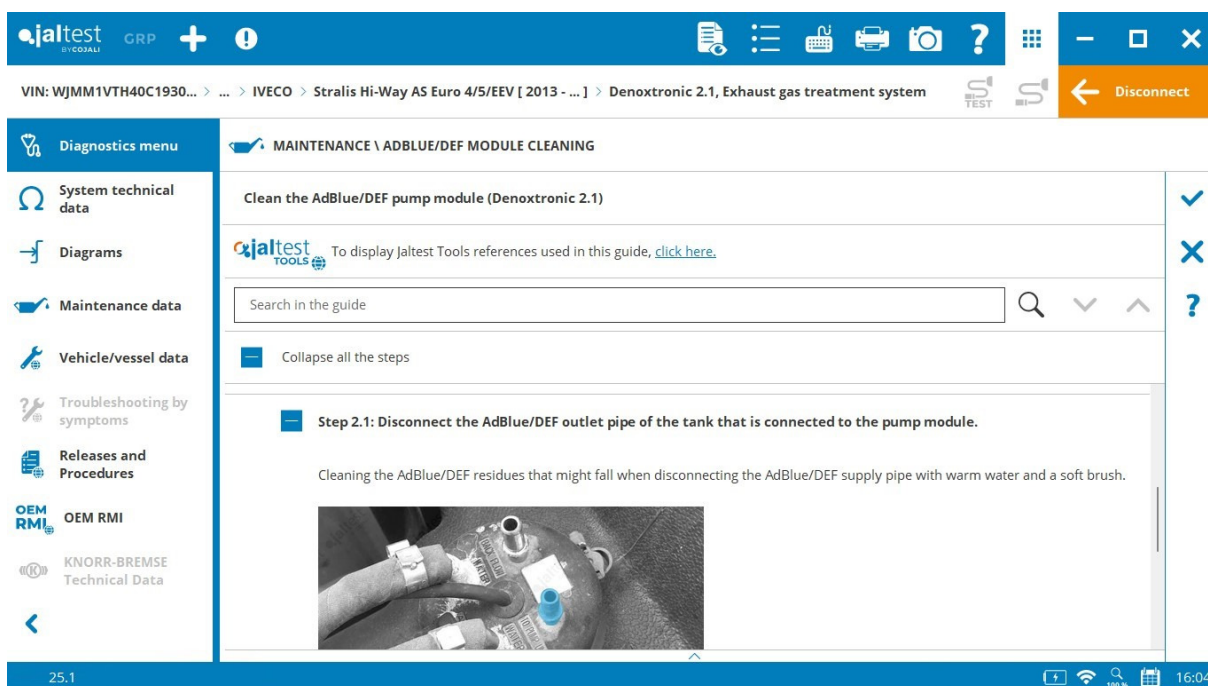
The parameter modification is added in the **PCCM** predictive cruise control system in **F-MAX** models. With this function, it is possible to set the system behaviour.

The parameter modification is also added in the **TPMS** system, which enables the settings of the number of antennas or the nominal pressure of the tire.



## IVECO

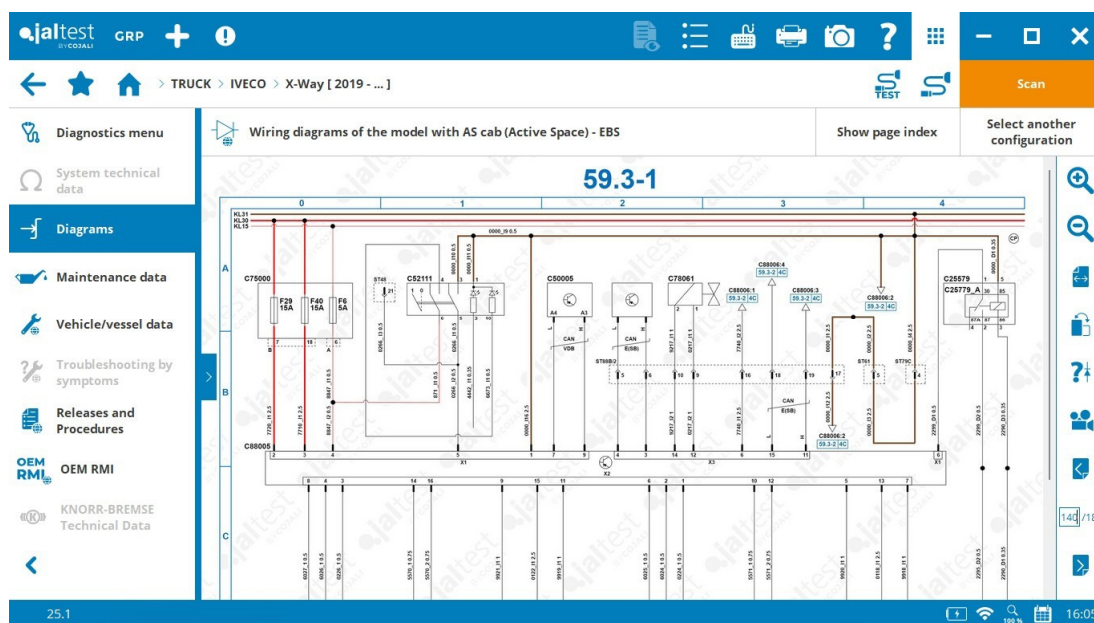
The cleaning procedure of the **Denoxtronic 2.1** module is added in AdBlue/DEF Denox 2.1 modules through the use of Jaltest Tools kit (Ref. 50105190).



New wiring diagrams by model in **Stralis X-Way Euro 6 and Trakke Euro 4/5**.

Information available with the subscription of the new technical information module 'Jaltest INFO Plus'.

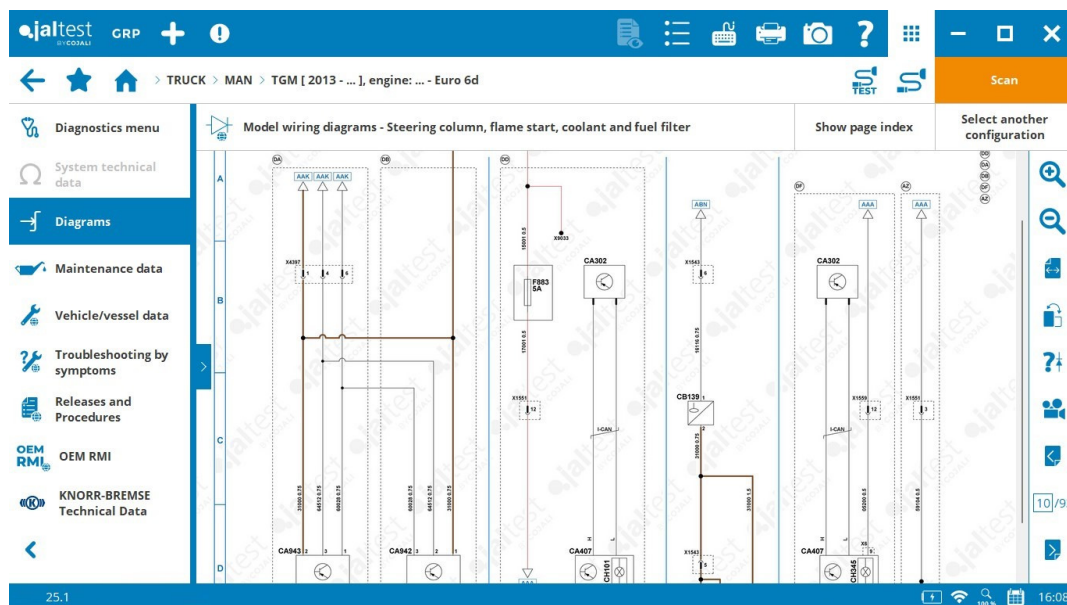




## MAN

New wiring diagrams by model in **TG1/TG2 Euro 5 EEV and Euro 6d**.

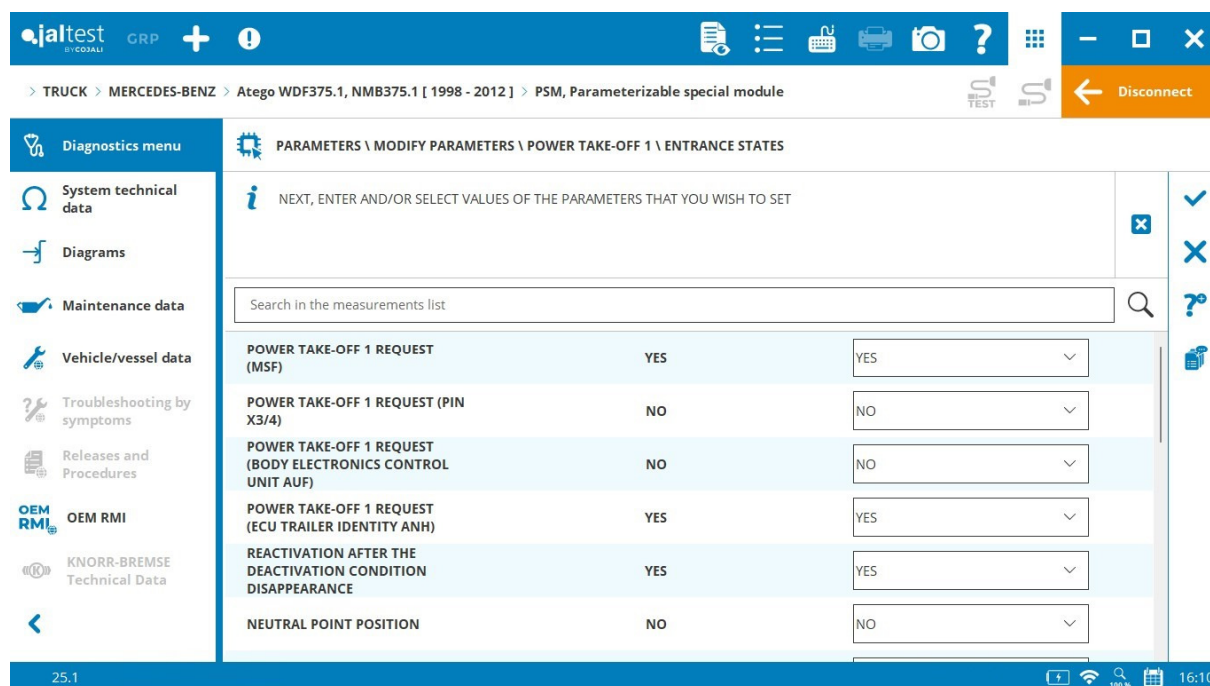
Information available with the subscription of the new technical information module 'Jaltest INFO Plus'.



## MERCEDES-BENZ

The parameter settings of the power take-off are added in the **PSM** system in **Euro 3** models.





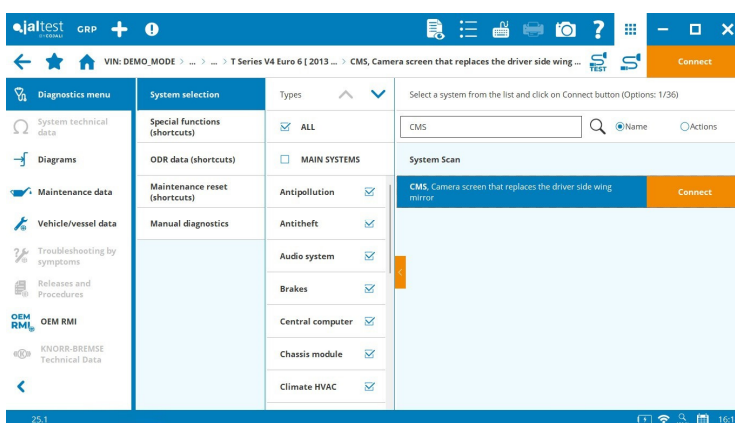
## RENAULT

In vehicles with **V3 technology**:

**TECU** gearbox control system, the gear management check is added, even when the gearbox is not installed in the vehicle.

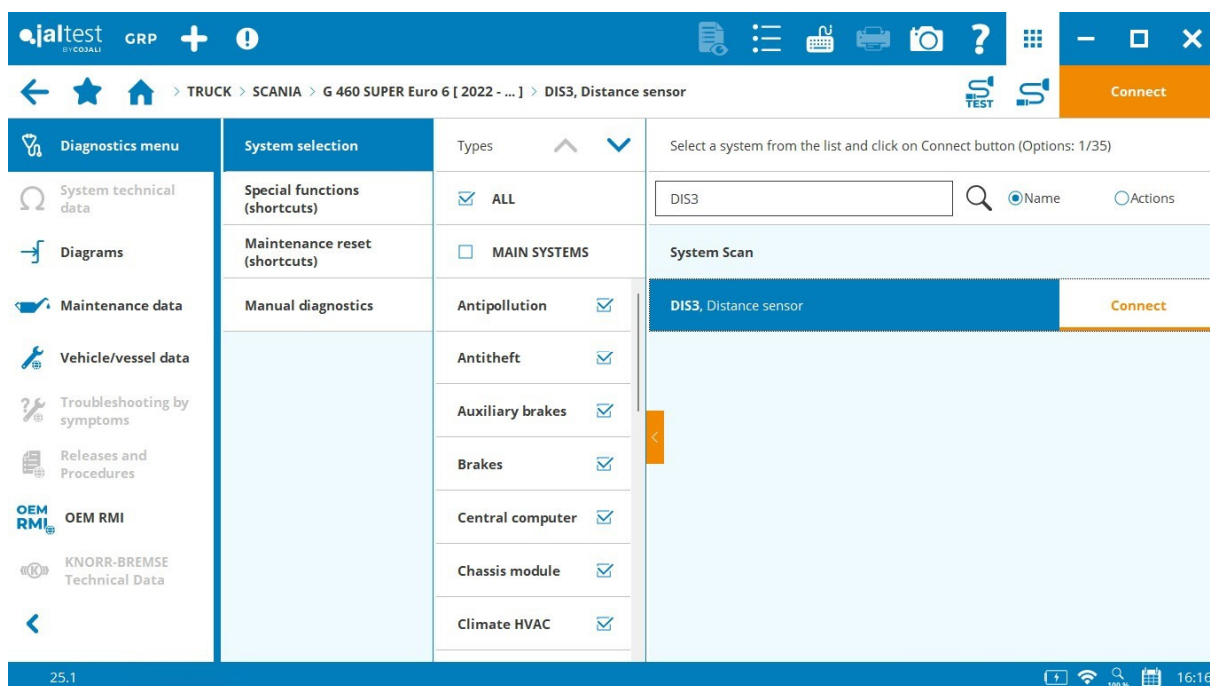
In vehicles with **V4 technology**:

- ⊕ **CMS (Camera Monitor System)** system as a replacement system for the installation of rear-view mirrors.



## SCANIA

- ⊕ **DIS3** distance control system in **P, G, R and S series** models **from 2017**.



The injector code parameter is added in the **EMS10** engine control system for V8 engine versions.

## VOLKSWAGEN

In **Constellation [2023 - ...]** and **Delivery 9/11/13 [2023 - ...]** models.

⊕ **ABS/ESC 24V** system

In **Delivery [2023 - ...]** and **New Delivery [2018 - ...]** models.

⊕ **ABS/ESC 12V** system

## VOLVO

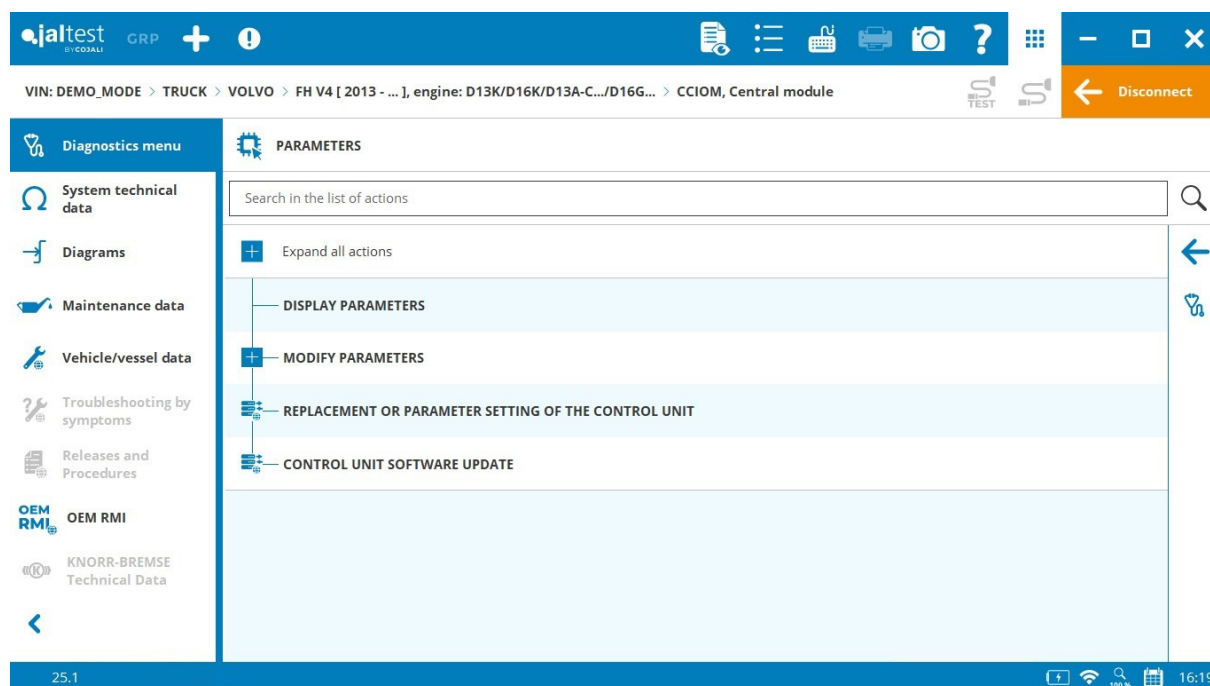
In vehicles with **V3 technology**:

**APM EAC1/EAC1+** brake system, update of the control unit software.

Information available with the 'Knorr-Bremse Diagnostics' subscription, the new diagnostics platform for all Knorr-Bremse systems.

In vehicles with **V4 technology**:

New Jaltest Central Services functions for updating or replacing the control unit for the following systems: **CCIOM**, **SID** among others.



## BUS

### IRIZAR

New wiring diagram for the **ESS (Energy Storage System)** system for **iebus/ietram** electric bus models.

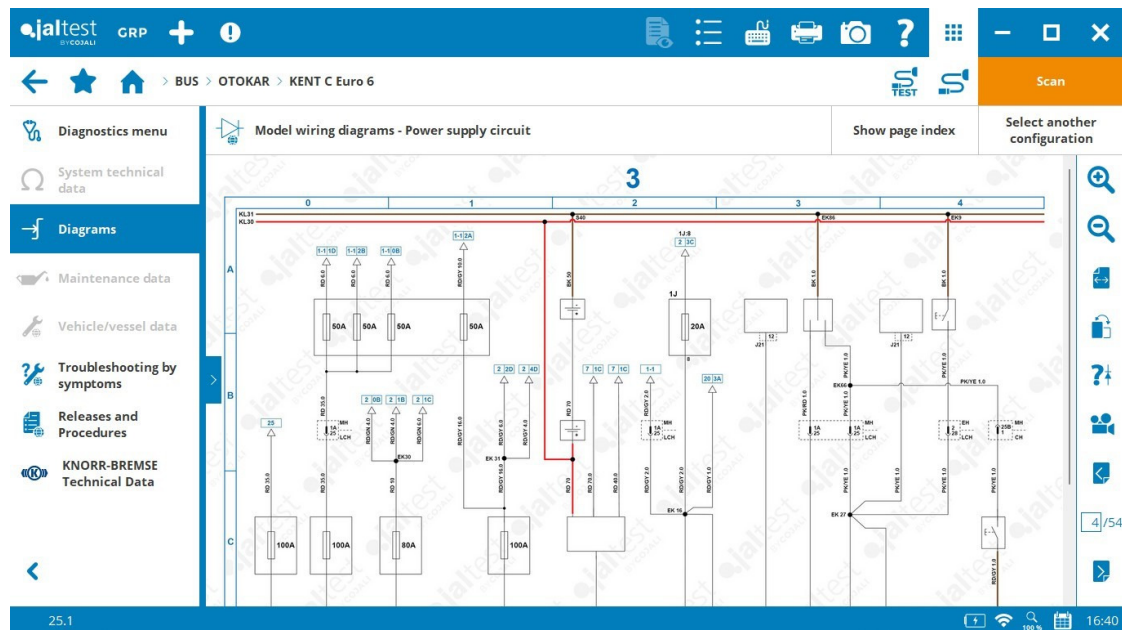
### KING LONG

Extended coverage in **PEV12 (ZF Electric Drive)** electric models, including system operation data.

### OTOKAR

New wiring diagram of the model for **KENT C Euro 6**.

Information available with the subscription of the new technical information module 'Jaltest INFO Plus'.

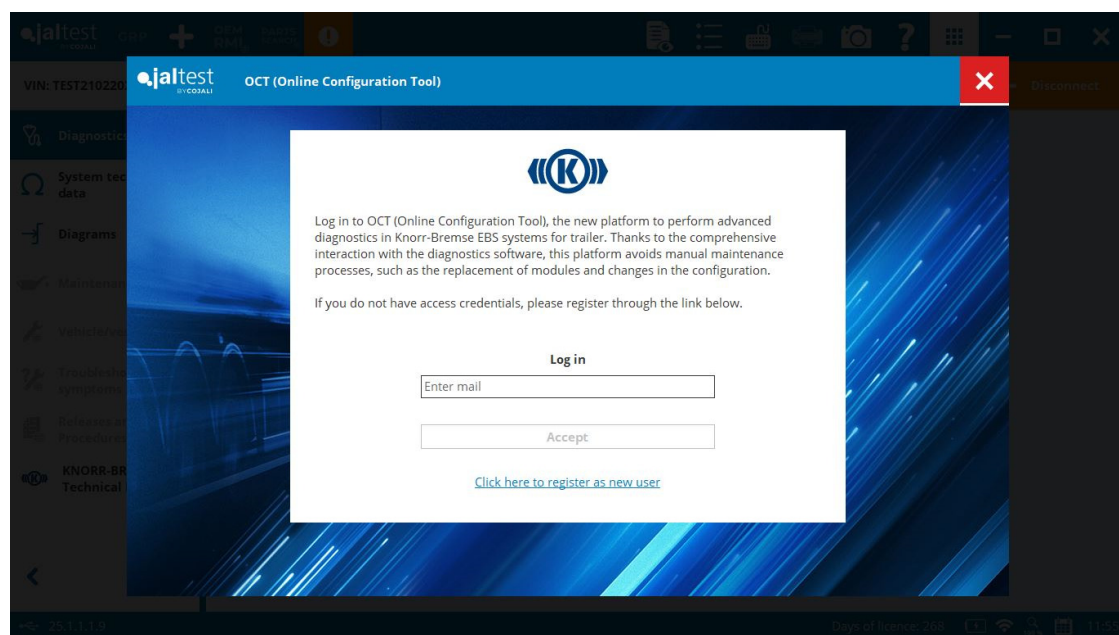


## TRAILER

### KNORR-BREMSE

Communication is established with the **OCT (Online Configuration Tool)** platform in the **ITEBS X** system.

Information available with the 'Knorr-Bremse Diagnostics' subscription, the new diagnostics platform for all Knorr-Bremse systems.



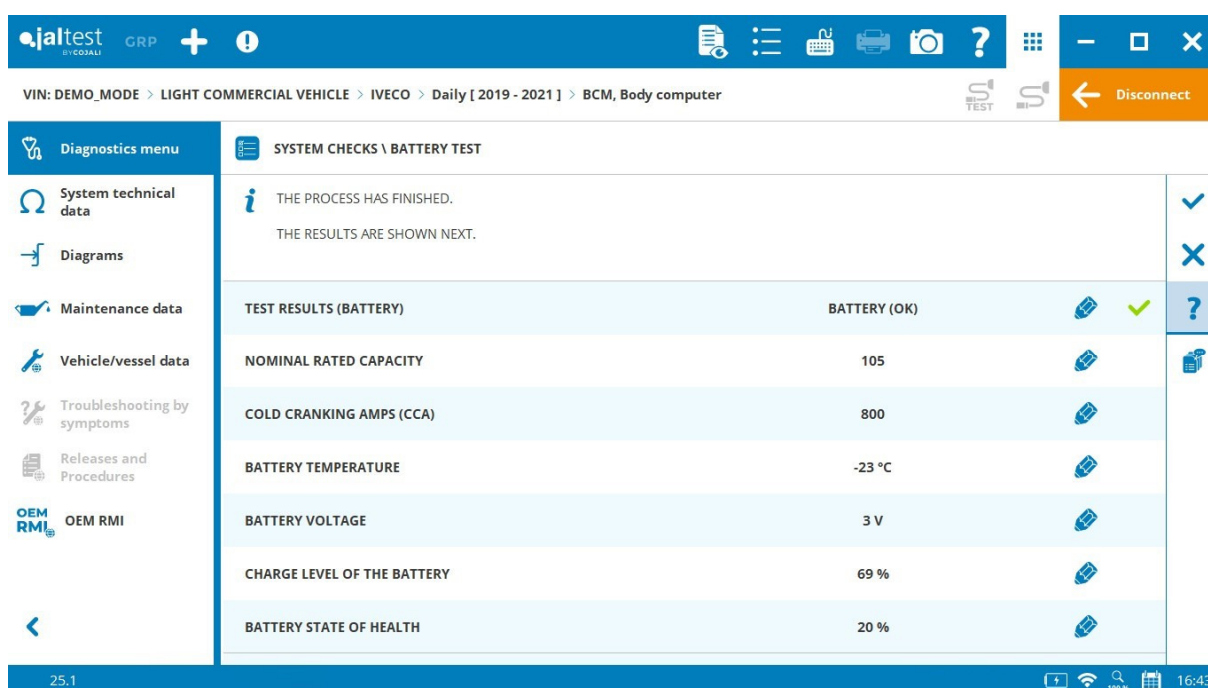
## LIGHT COMMERCIAL VEHICLE

### FIAT

⊕ **HALF** ADAS system of the driver assistance camera for the **Ducato 2024** model.

### IVECO

New battery test in the **BCM** system in **Daily 2019 and 2021 models**.



The screenshot shows the jaltest CV software interface. The top bar includes the jaltest logo, a GRP button, and various icons. The main menu on the left lists options like System technical data, Diagrams, Maintenance data, Vehicle/vessel data, Troubleshooting by symptoms, Releases and Procedures, and OEM RMI. The main display area shows the 'SYSTEM CHECKS \ BATTERY TEST' results. A message states 'THE PROCESS HAS FINISHED. THE RESULTS ARE SHOWN NEXT.' Below this, a table displays the test results for the battery.

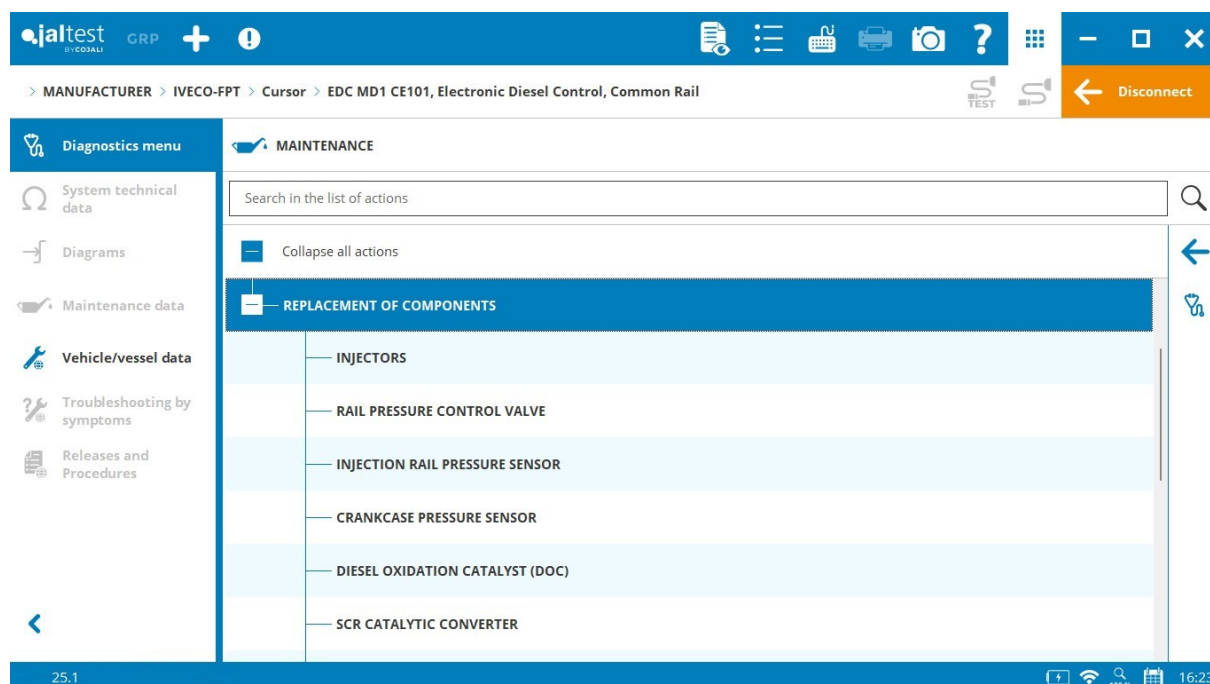
TEST RESULTS (BATTERY)	BATTERY (OK)	Status
NOMINAL RATED CAPACITY	105	Pass
COLD CRANKING AMPS (CCA)	800	Pass
BATTERY TEMPERATURE	-23 °C	Pass
BATTERY VOLTAGE	3 V	Pass
CHARGE LEVEL OF THE BATTERY	69 %	Pass
BATTERY STATE OF HEALTH	20 %	Pass

The bottom status bar shows the version number 25.1, connectivity icons, and the time 16:43.

## MANUFACTURERS

### IVECO FPT

New maintenance services in the **EDC MD1 CE101** engine control system required after the system component replacement.



## KNORR-BREMSE

The replacement of the system control unit is added in **FLR25** and **FLC25** ADAS systems.

Information available with the 'Knorr-Bremse Diagnostics' subscription, the new diagnostics platform for all Knorr-Bremse systems.