



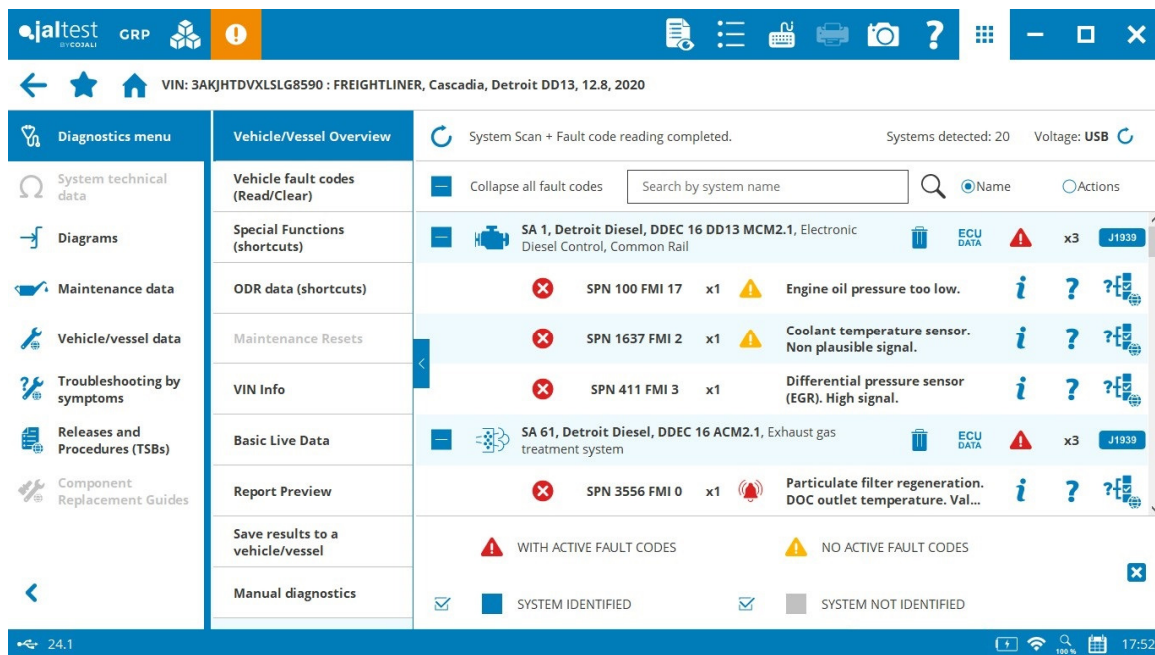
INNOVATIONS 24.1

SOFTWARE INNOVATIONS

The new software version Jaltest 24.1 once again offers more improvements and innovations that consolidate this tool as a benchmark in all-makes diagnostics for commercial vehicles, agricultural equipment, OHW equipment, material handling equipment and vessels.

With the innovations of the graphic interface, it is possible to:

- Add new formats to the table cells and highlight data.
- Attach the diagnostics report to a Jaltest Feedback.
- Clear fault codes directly from the results of a system scan process.

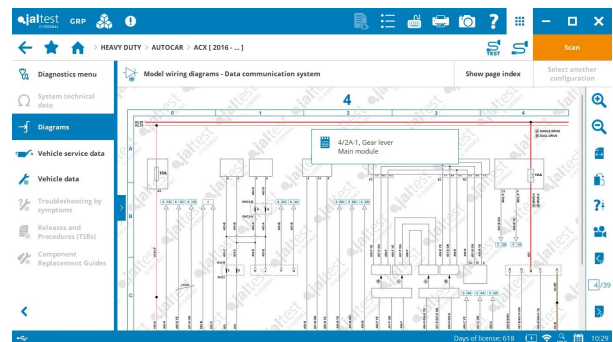
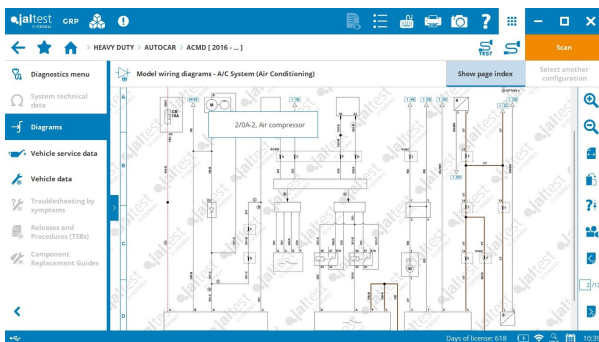


DIAGNOSTICS AND SYSTEMS

HEAVY DUTY VEHICLES

AUTOCAR

Wiring diagrams that include the body builder connectors and their electrical connections in **Xpert ACMD** and **Xpeditor ACX** Series.



CUMMINS

Extended coverage in all **CUMMINS** systems, especially for **GHG21** systems with more than 300 new references and variants added.

BES EV CM2450 electric drive control unit, customer and vehicle information parameters.

MANUFACTURER > CUMMINS > BES EV > BES CM2450, Electric drive control unit

PARAMETERS \ ECU INFORMATION \ VEHICLE INFORMATION

DATA FORMAT:
 - VIN CODE IS FORMED BY 17 ALPHANUMERIC DIGITS, EXCEPT FOR THE FOLLOWING LETTERS: "I, l, O, o, Q, q".
 - SPECIAL CHARACTERS ARE NOT ALLOWED IN ANY PARAMETER OF THE GROUP

INITIAL CONDITIONS:
 - THE ENGINE MUST BE STOPPED

VIN CODE (VEHICLE IDENTIFICATION NUMBER)	1BAKGCUA0PF398112	<input type="text"/>	?
VEHICLE MANUFACTURER	PROTERRA	<input type="text"/>	?
VEHICLE MODEL	ZX5	<input type="text"/>	?
MANUFACTURING YEAR	2023	<input type="text"/>	?

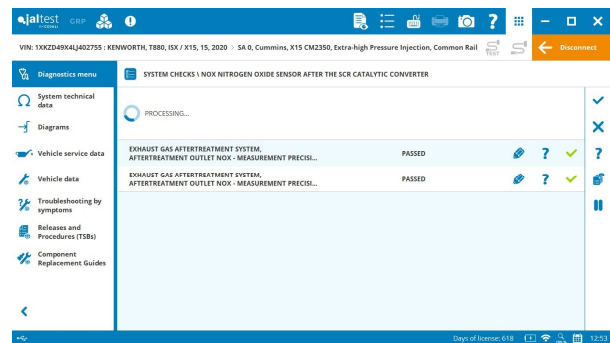
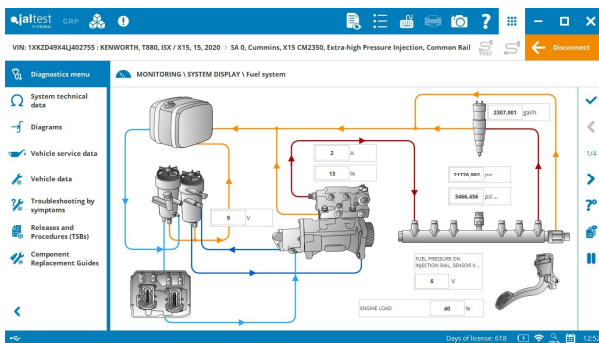
Days of license: 618 12:17

GHG21 engine systems:

- **B6.7, L9, X12/X15 CM2450** engine control system, enhanced fuel System Display and new component images.
- **L9 CM2450** engine control system, system checks to verify the intake air heater.

GHG17 engine systems:

- **B4.5/B6.7, L9 X12 and X15 CM2350** engine control system, enhanced fuel System Display, system checks to verify the intake air control and NOx sensor performance after catalytic converter.



EPA07/10/13 engine systems:

- **ISB, ISC, ISL and ISX** engine control system, enhanced fuel System Display, switches test for **ISB6.7 CM2250**.

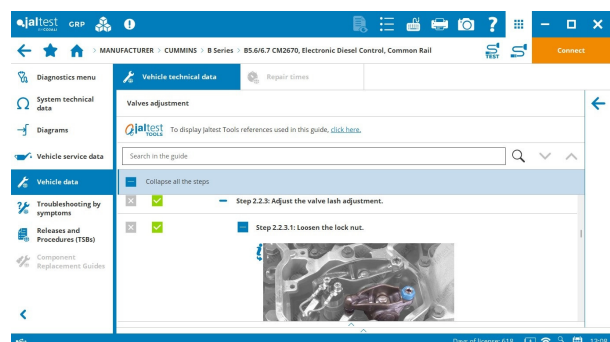
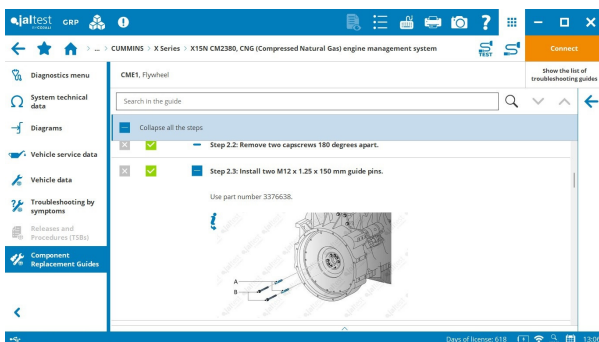
EPA04 engine systems:

- **ISC/ISL CM850** engine control system, enhanced fuel System Display, 80 **component replacement** guides.

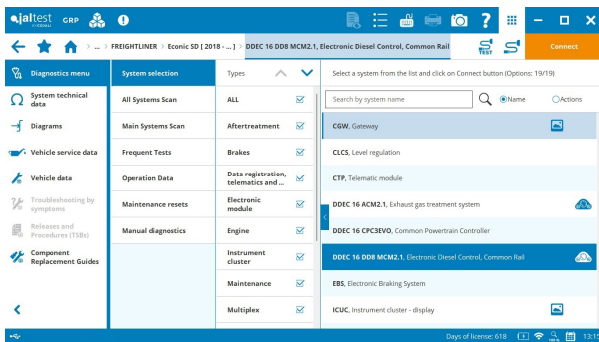
CNG engine systems:

- **X15N CM2380** engine control system, 15 **component replacement** guides.

Vehicle technical data and procedures such as the *valve lash adjustment*, fuel pump, oil filter and injector replacement for **B4.5/5.6/5.9/6.3/6.7 B181 CM2670** engines.



DETROIT DIESEL-MBE



Extended coverage in all **DETROIT DIESEL-MBE** systems, especially for 2023/2024 vehicles with new references and variants added.

DDEC13/16 EPA13/ and GHG14/17 vehicles:

- **CPC4** powertrain module, monthly operation data and optimized idle parameters.

- **MCM2.1 DD5/DD8** engine control system,

injector coding and injector reset functions.

New vehicle technical data for **DD13 GH21** and **DD15 GHG17** engines and injector replacement procedure for **DD5/DD8, DD13/DD15/DD16** engines.

FREIGHTLINER

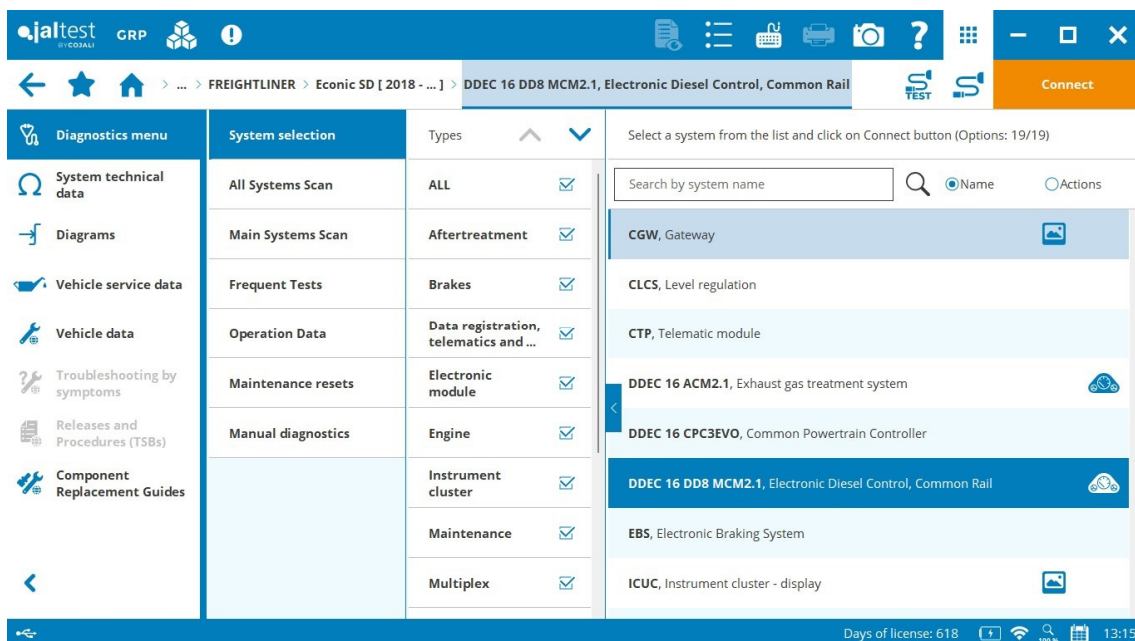
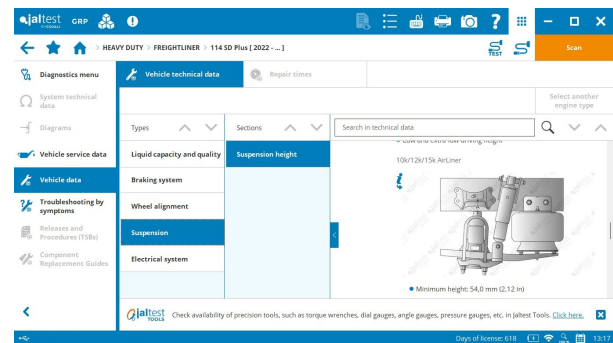
M2 and SD Plus Series: Model technical data. **Econic SD [2018 - ...]** model:

- ⊕ **CLCS** level regulation system, basic functions including wiring diagrams.

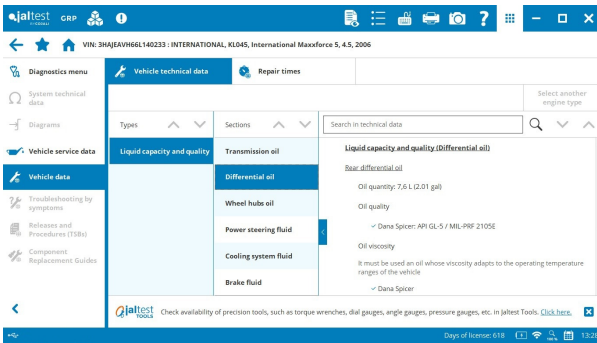
- ⊕ **EBS** electronic braking system, basic functions including wiring diagrams.

- ⊕ **MUX** multiplex system.

- ⊕ **PSM** parametrizable special module.



INTERNATIONAL



Wiring diagrams that include the body builder connectors and their electrical connections in **TerraStar, TranStar and 9900i GHG17/21** models.

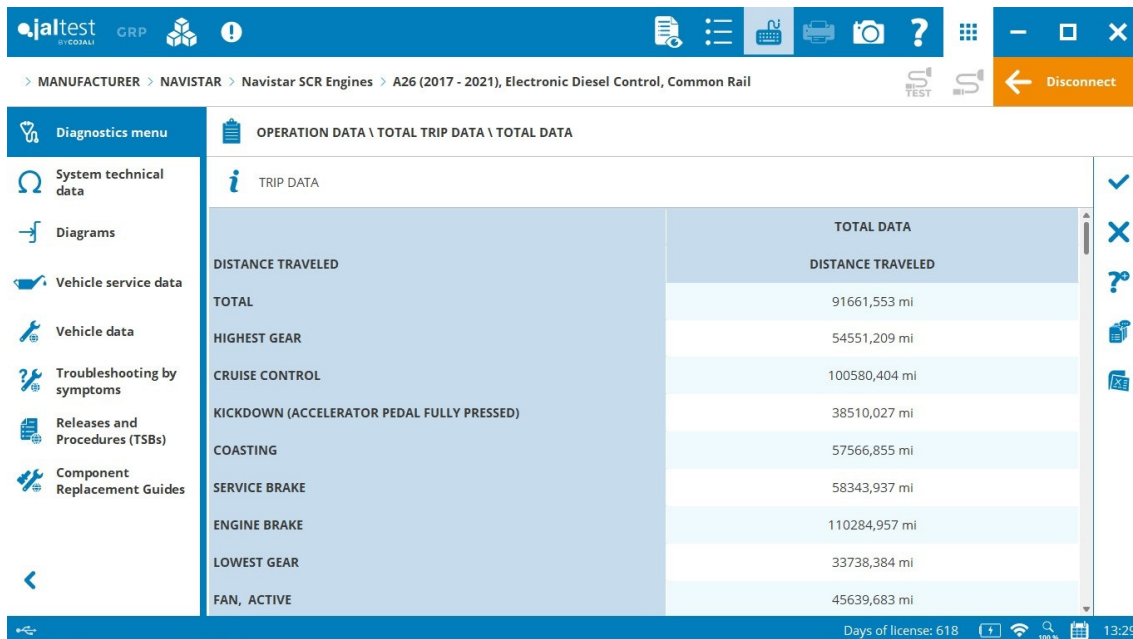
Model technical data for **CityStar CF500 and CF600** Series.

NAVISTAR

SCR engines:

- **A26 GHG17** engine control system, operation data.

Procedures such as injector replacement for **A26 engines**.



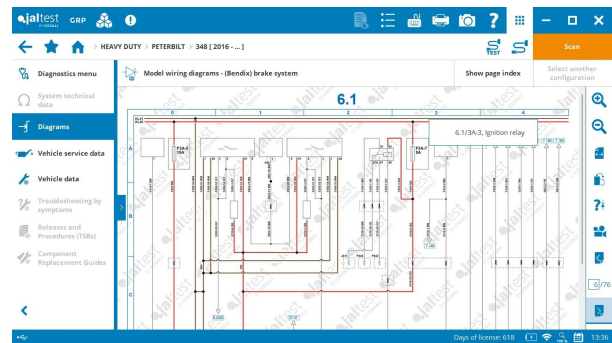
PACCAR

GHG 21 vehicles:

- **PCI-2 GHG21** engine control system, more than 300 **SMART** guides.

PETERBILT

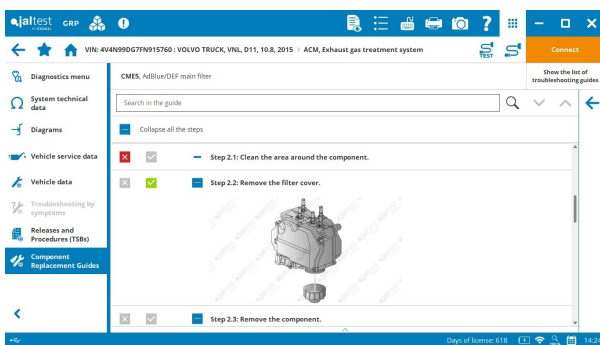
Wiring diagrams that include the body builder connectors and their electrical connections in **348** and **220 Series** models.



STERLING

Model technical data for **Acterra** and **Set-Back** Series.

VOLVO AND MACK

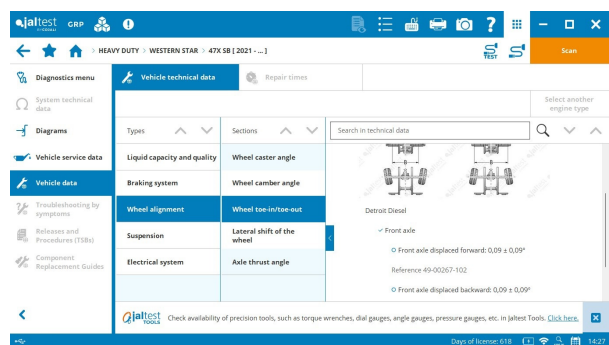


US13-GHG21 vehicles:

EMS, ACM, TECU systems, more than **20 component replacement guides**, new location and component images.

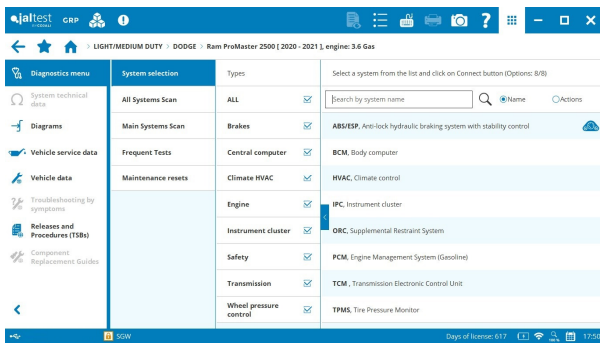
WESTERN STAR

Model technical data for all models, including: **4700** and **4900 Series**, **47X** and **49X Series** and **5700** and **6900 Series**.



LIGHT/MEDIUM DUTY

DODGE

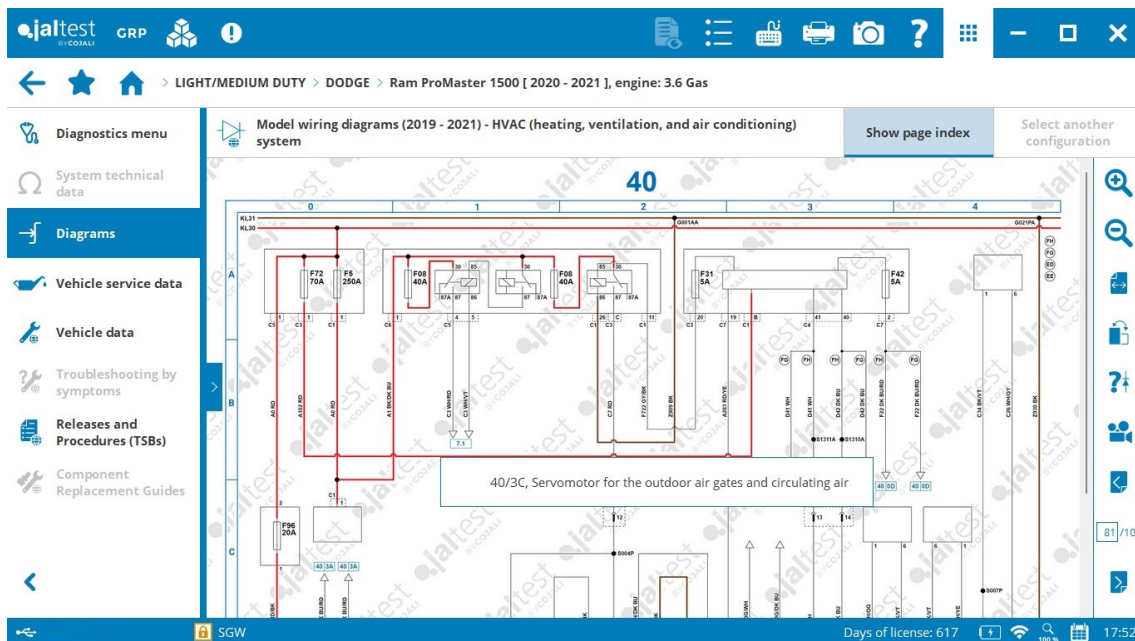


RAM ProMaster [2014 - 2021] models.

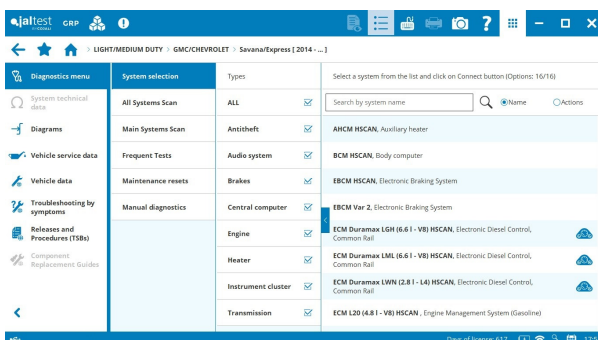
- ⊕ **TPM** tire pressure monitor.
- ⊕ **ORC** airbag system.
- ⊕ **HVAC** air conditioning system.
- ⊕ **RFH** steering system.

New **RAM ProMaster 1500/2500/3500 [2020 - 2021]**.

Wiring diagrams that include the body builder connectors and their electrical connections in **RAM ProMaster [2019 – 2021]** models.



GMC/CHEVROLET



New **GMC/Chevrolet Savana/Express [2018 - ...]**.

Permanent fault codes for all **Duramax** engines.