



## INNOVATIONS 25.1

# SOFTWARE INNOVATIONS

---

- An access to the list of **ADDITIONAL MODULES** has been added to the main menu so that all users can consult the additional modules available.
- Technical information related now also to the **components of the diagram by model**.
- During the connection to a system, the possibility of guiding the user to a specific action such as the calibration of the control unit is enabled, in the event that during the connection it is detected that the system is out of calibration.
- Access to the **manual diagnostics** process is enabled **from troubleshooting guides**.
- Possibility of relating videos to particular fault codes. This allows a video considered of interest to be related to a specific fault code that can be useful in future diagnostics processes.
- It is now possible to view the brands and models offered by Jaltest coverage in its different modules, even without a licence, in order to easily consult the possible coverage to be subscribed.
- Possibility of accepting the third-party data transfer during the installation process of Jaltest Diagnostics software in order to **create new business opportunities for your workshop**.

Take into account that this document is only a summary of the most relevant information of this new version. For further information, please visit Jaltest Report.

## DIAGNOSTICS AND SYSTEMS

---

### INBOARD

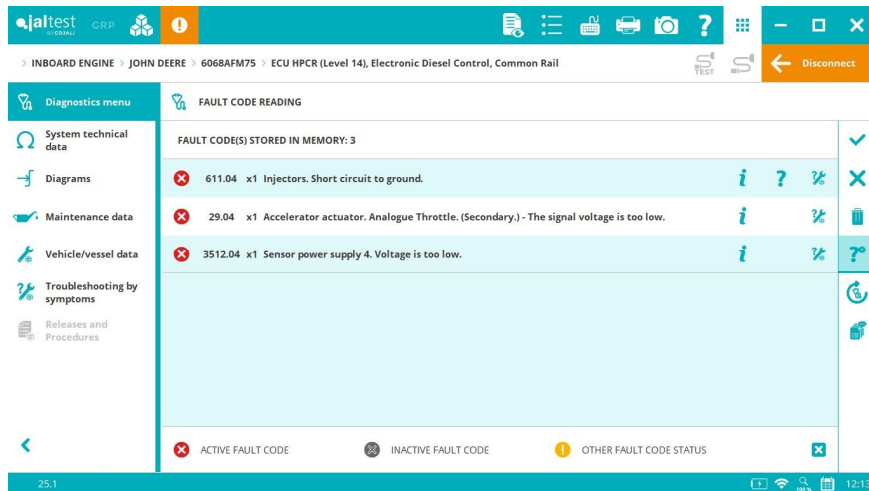
#### ILMOR

New engine types for **6.0 L MV8** and **6.2 L MV8** models.

#### JOHN DEERE

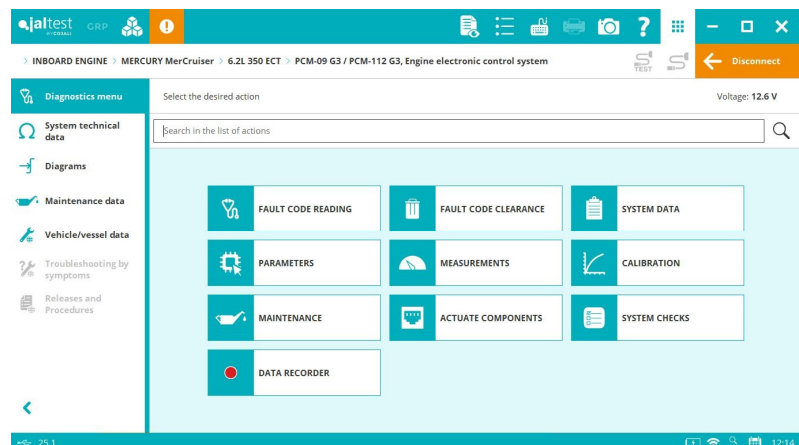
- Improved compatibility of the **ECU Denso (Level 16)** system with inboard and stationary engines.

- Fault code troubleshooting guides for all models with **ECU Denso (Level 14)** systems.



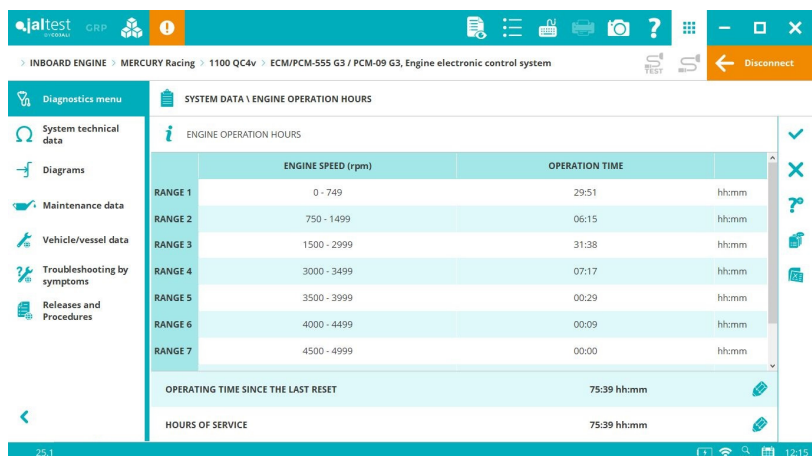
## MERCURY MerCruiser

New software variants, fault codes and measurements that apply to models with **PCM-09** and **PCM-112** engine management systems.



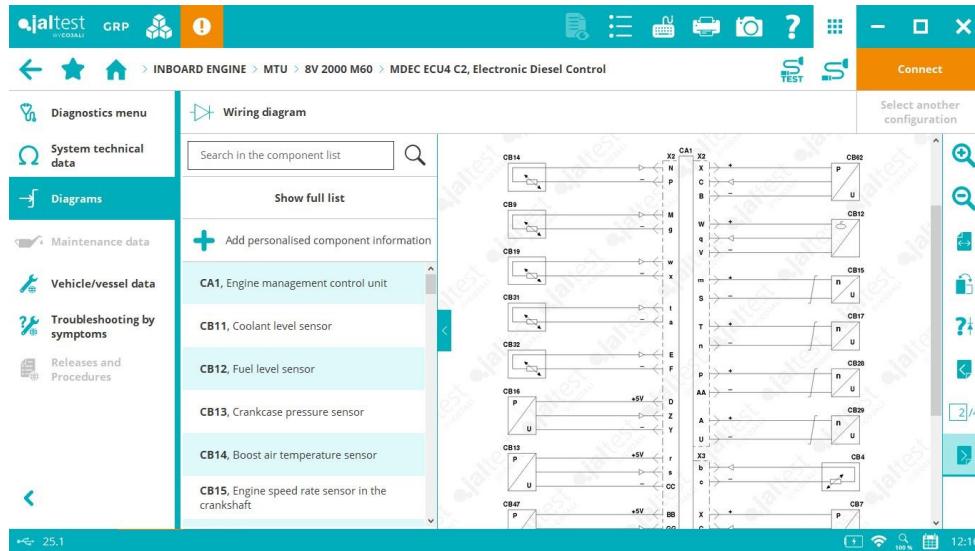
## MERCURY RACING

New software variants, fault codes and measurements that apply to models with **PCM-09** engine management systems.



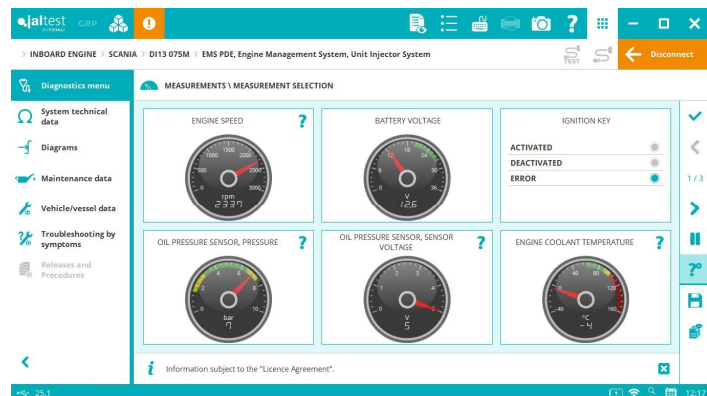
## MTU

Improvements in technical information in the **MDEC ECU-4** system: wiring diagrams, system technical data, engine technical data.



## SCANIA

- Development of new **DI13 075M** model with **EMS PDE (EDC MS6.2)** engine management system, adding the following functionalities:
  - o Fault code reading
  - o ECU data
  - o Real-time measurements
  - o Component actuations
  - o Engine technical data
  - o Maintenance services
  - o Wiring diagrams, including technical data and location images of the components

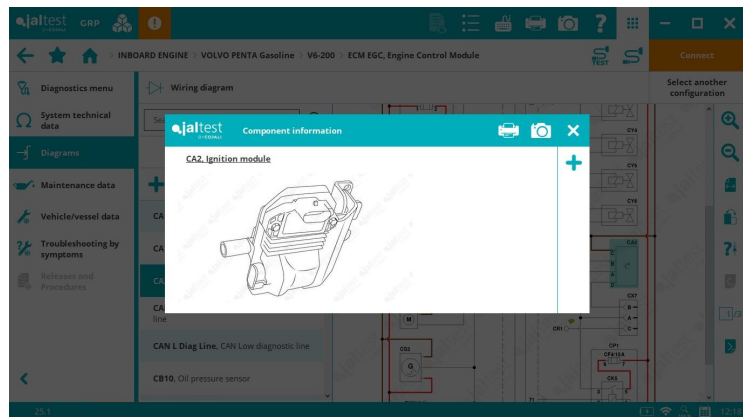


## VOLVO PENTA

New technical data of engine types for **D4 and D6** models.

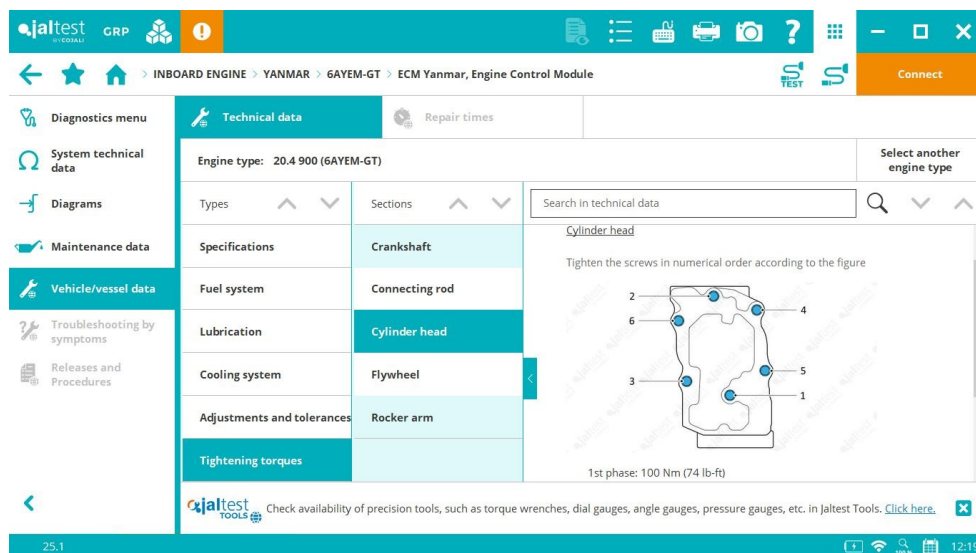
## VOLVO PENTA Gasoline

Improvements in diagrams and technical information in the **ECM EGC** system for families of **4.3, 5.0, 5.7, V6, V8** models.



## YANMAR

New Engine types created for **6AYEM-ET, 6AYEM-GT, 6AYEM-ST** models.



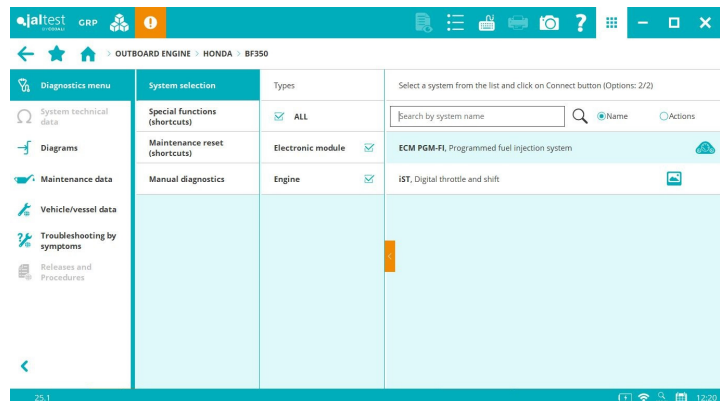
## OUTBOARD

### HONDA

- Development of new **BF350** model with **ECM PGM-FI** engine management system and **IST, electronic module, digital throttle and shift**, completing the following functionalities:

## ECM PGM-FI

- Fault code reading
- ECU data
- Real-time measurements
- Component actuation
- Parameter setting
- Maintenance reset
- Engine technical data
- Maintenance services
- Wiring diagrams, including technical data and location images of the components
- Troubleshooting guides

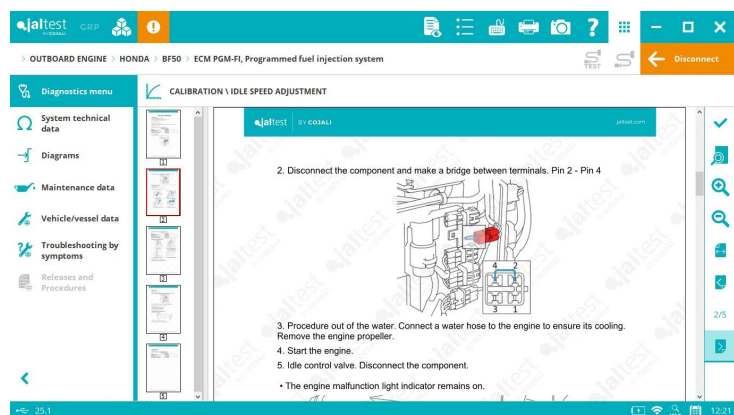


## IST, digital throttle and shift

- ECU data
- Parameter settings

## ECM PGM-FI

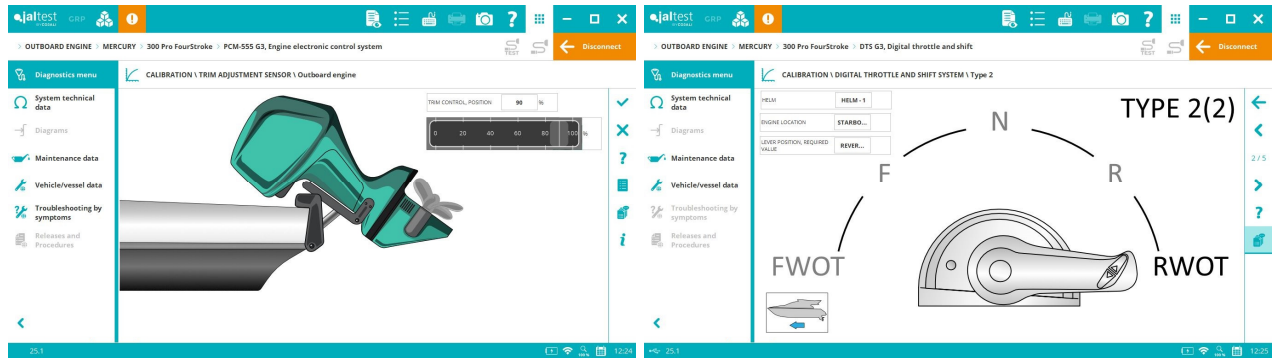
- New advanced diagnostics functions in some variants of **BF250** model, including ignition coil actuation, VTEC valve actuation, cylinder cut-out and reset after maintenance.
- Development of idle speed calibration for **BF40, BF50, BF60, BF65, BF75, BF80, BF90, BF100, BF115, BF130, BF105, BF135, BF140, BF150, BF175, BF200, BF225, BF250** models.
- Smart troubleshooting guides by fault code for all models.



- ⊕ New **PGM-FI ECM (2-pin)** engine management system that applies to **BF115** and **BF130** models.

## MERCURY

- New software variants that apply to the latest models of **ECM 70 G3** and **ECM/PCM 555** systems.
- Creation of the **Pro FourStroke** family with **200 Pro FourStroke**, **250 Pro FourStroke**, **300 Pro FourStroke** models.

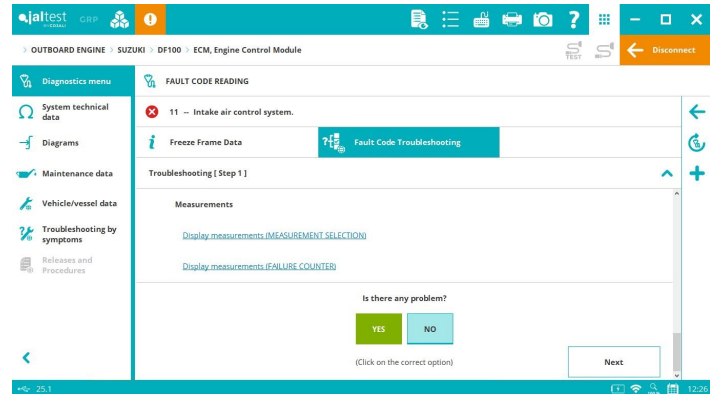


## MERCURY RACING

New software variants that apply to the latest models with **PCM-112** engine management system.

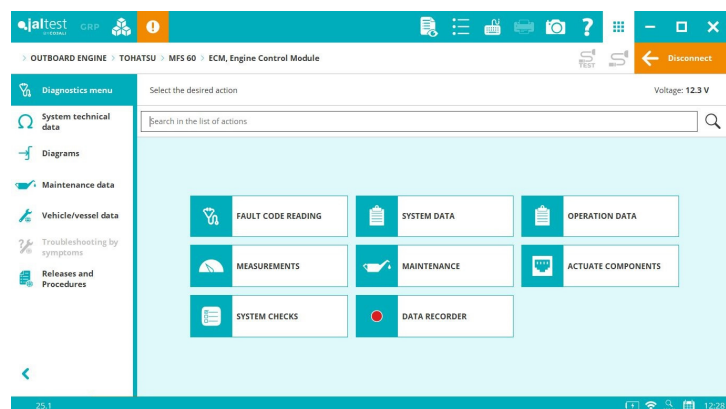
## SUZUKI

Smart troubleshooting guides by fault code for all models with **ECM** engine management system.



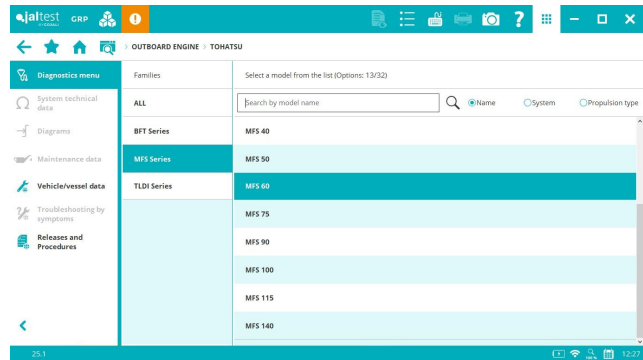
## TOHATSU

- ⊕ Development of the new **ECM** electronic engine control system to include the new **MFS 40**, **MFS 50** and **MFS 60** models to complete the coverage of the **MFS Series** family.



- New cable (**JDC 633A**) that allows connection to the engine management system of the **MFS 40**, **MFS 50** and **MFS 60** models.





## YAMAHA

New rotor reset functionality is included for **F350** models.

## JET SKI

### KAWASAKI

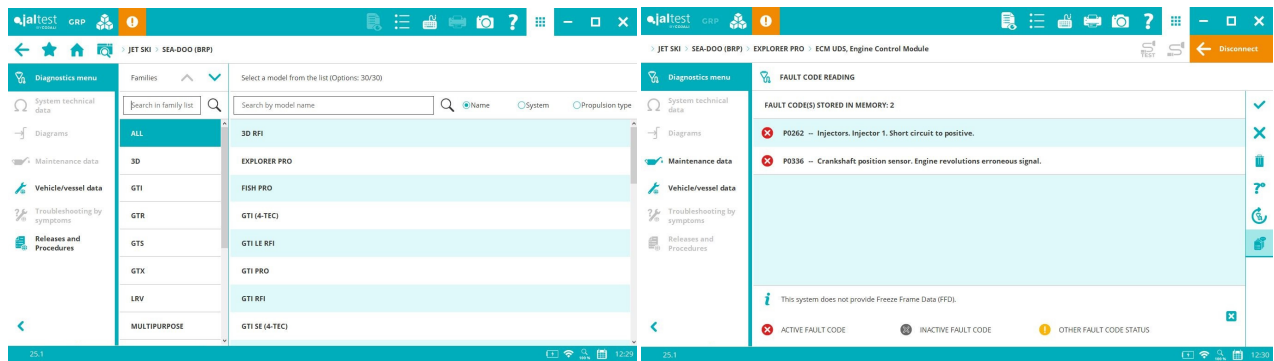
Improvement in the presence of fault codes for all models of the **ULTRA** family.

### SEA-DOO (BRP)

⊕ New **ECM** engine management system (technology changeover on KWP2000 control units to UDS in 2024) for the following models:

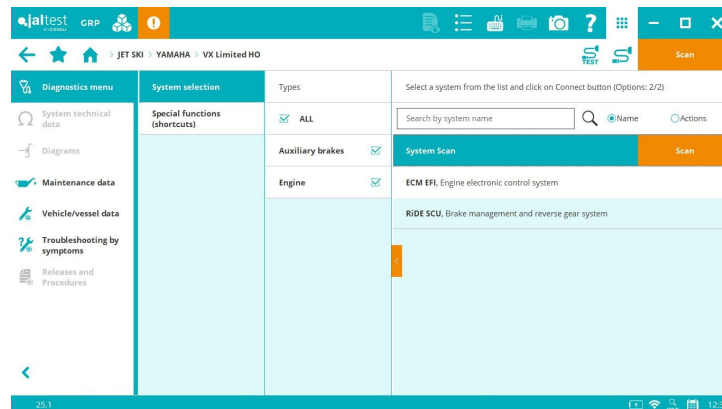
- **EXPLORER PRO**
- **FISH PRO**
- **GTI (4-TEC)**
- **GTI PRO**
- **GTI SE (4-TEC)**
- **GTR**
- **GTX (4-TEC)**
- **GTX LIMITED (4-TEC)**
- **GTX PRO**
- **RXP-X (4-TEC)**
- **RXT-X (4-TEC)**
- **SPARK**
- **SPARK TRIXX**
- **WAKE**
- **WAKE PRO**





## YAMAHA

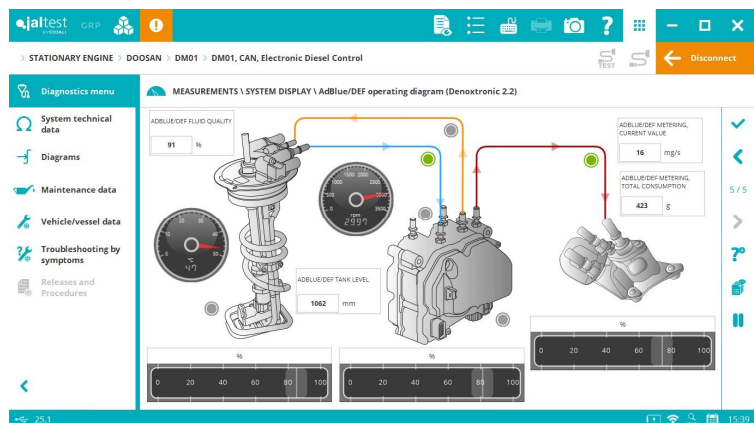
- New software variants of the **ECM EFI** system that apply to the latest models.
- New software variants of the **RiDE SCU** system that apply to the latest models included for the loading of the brake gate calibration.



## STATIONARY ENGINE

### DOOSAN

The System Display has been added in **DOOSAN DM01, DM02, DM03** (SAE J1939) engine control systems.

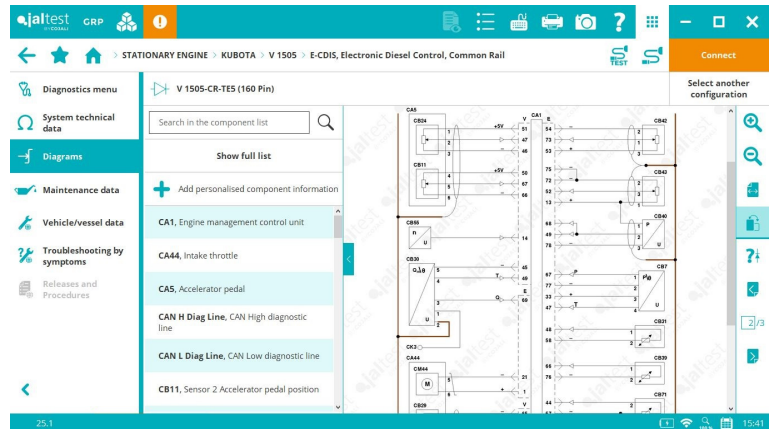


## CATERPILLAR

**C-3.4B** (SAE J1939) engine control system, inducement mode reset, caused by problems in the exhaust gas aftertreatment system.

## KUBOTA

New wiring diagram configurations in the **E-CDIS** (SAE J1939) engine control system for **V1505**, **V2607** and **V3307** models.



## LIEBHERR

**ECU3** (UDS) engine control system, System Display for the fuel system and maintenance reset after the Diesel Particulate Filter replacement.