



INNOVATIONS 24.1

CV
COMMERCIAL
VEHICLE

AGV
AGRICULTURAL
EQUIPMENT

OHV
OFF-HIGHWAY
EQUIPMENT

MHE
MATERIAL
HANDLING

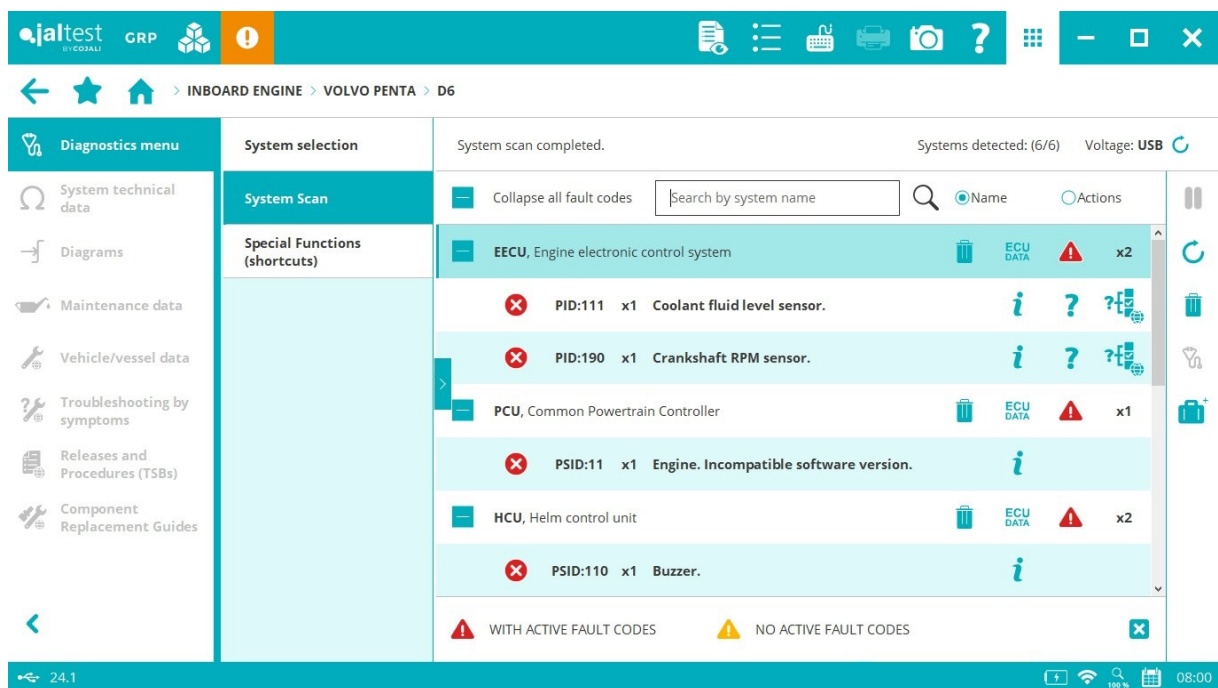
marine
VESSELS

SOFTWARE INNOVATIONS

The new software version Jaltest 24.1 once again offers more improvements and innovations that consolidate this tool as a benchmark in multi-brand diagnostics for commercial vehicles, agricultural equipment, OHW equipment, material handling equipment and vessels.

With the innovations of the graphic interface, it is possible to:

- Add new formats to the table cells and highlight data.
- Attach the diagnostics report to a Jaltest Feedback.
- Keep the expert mode active in each software login.
- Clear fault codes directly from the results of a system scan process.



The screenshot displays the Jaltest 24.1 software interface. The top navigation bar includes the Jaltest logo, GRP, and various utility icons. The breadcrumb trail shows the path: INBOARD ENGINE > VOLVO PENTA > D6. The main interface is divided into a left sidebar with a 'Diagnostics menu' and a central area for 'System selection' and 'System Scan' results.

The 'System Scan' results are displayed in a table format. The table has columns for system name, fault codes, and actions. The scan is completed, and 6 systems were detected. The voltage is USB.

System Name	ECU DATA	Alerts	Count
EECU, Engine electronic control system	ECU DATA	Warning	x2
PID:111 x1 Coolant fluid level sensor.		Warning	
PID:190 x1 Crankshaft RPM sensor.		Warning	
PCU, Common Powertrain Controller	ECU DATA	Warning	x1
PSID:11 x1 Engine. Incompatible software version.		Warning	
HCU, Helm control unit	ECU DATA	Warning	x2
PSID:110 x1 Buzzer.		Warning	

At the bottom of the table, there are two summary indicators: 'WITH ACTIVE FAULT CODES' (Warning) and 'NO ACTIVE FAULT CODES' (Warning).

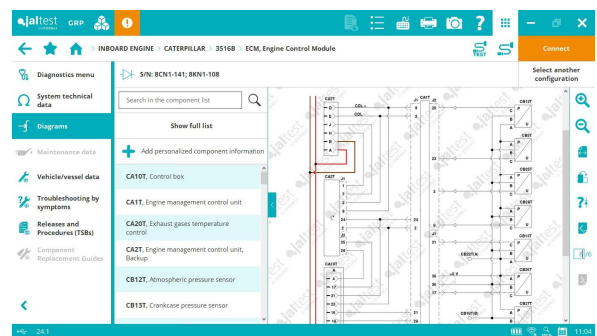
DIAGNOSTICS AND SYSTEMS

Take into account that this document is only a summary of the most relevant information of this new version. For further information, please visit Jaltest Report.

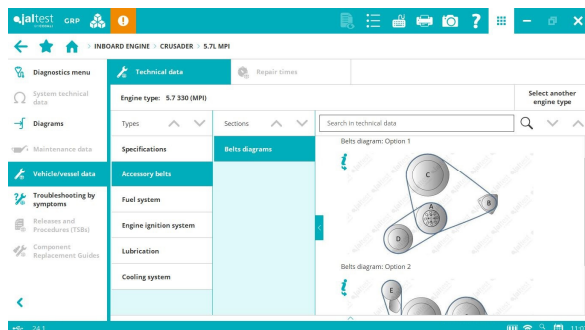
INBOARD

CATERPILLAR

Wiring diagram configurations for **3508B**, **3512B** and **3516B** models.



CRUSADER



New **8.2 MPI** model that includes diagnostics functions in the **MEFI 3-4** engine control system, wiring diagrams and troubleshooting guides.

Vessel technical data and maintenance services in several brand models.

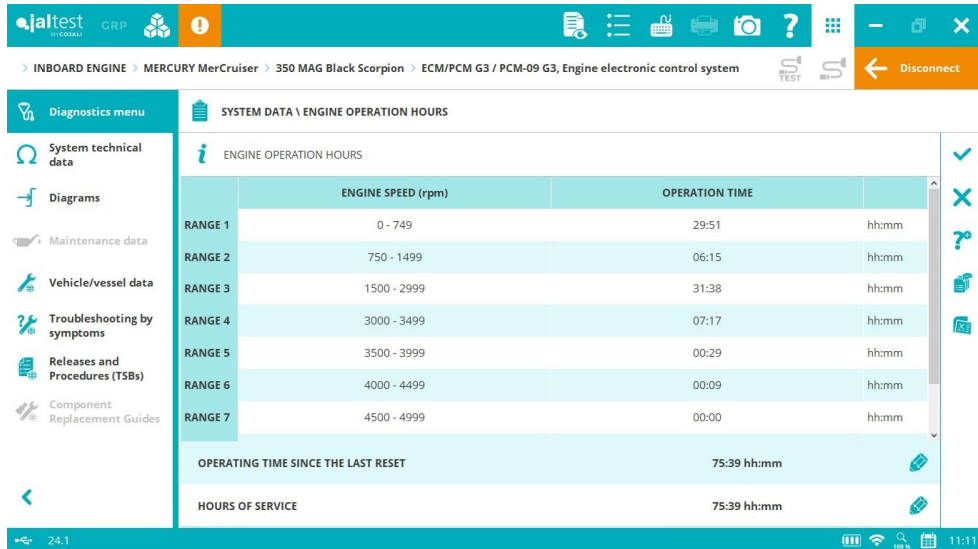
MAN

New **D2862 LE466/476** model that includes wiring diagrams, vessel technical data and maintenance services.

MERCURY MerCruiser

System Display in the trim calibration in **PCM**, **PCM-09 G3** and **PCM-112 G3** engine control systems.

Operation data in **ECM** and **PCM** engine control systems.



INBOARD ENGINE > MERCURY MerCruiser > 350 MAG Black Scorpion > ECM/PCM G3 / PCM-09 G3, Engine electronic control system

SYSTEM DATA \ ENGINE OPERATION HOURS

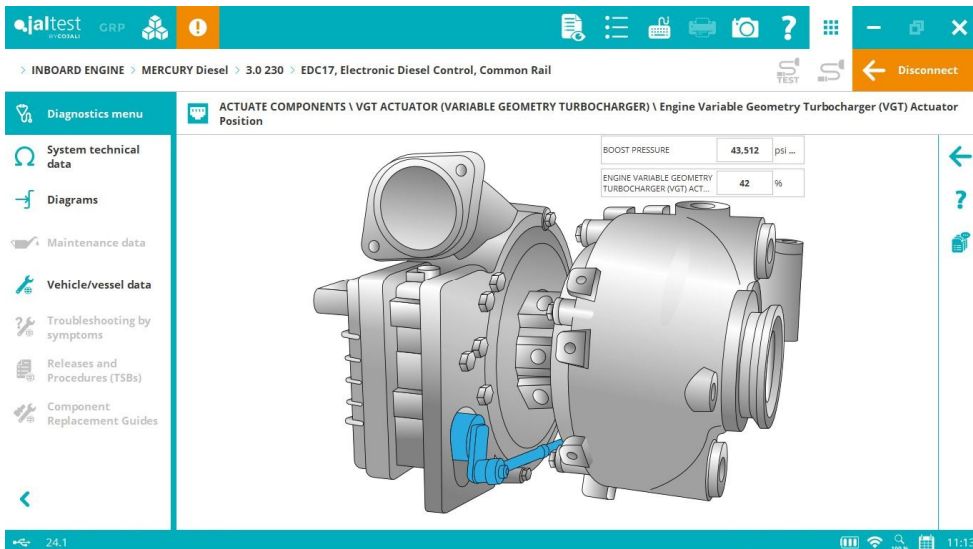
ENGINE OPERATION HOURS

	ENGINE SPEED (rpm)	OPERATION TIME	
RANGE 1	0 - 749	29:51	hh:mm
RANGE 2	750 - 1499	06:15	hh:mm
RANGE 3	1500 - 2999	31:38	hh:mm
RANGE 4	3000 - 3499	07:17	hh:mm
RANGE 5	3500 - 3999	00:29	hh:mm
RANGE 6	4000 - 4499	00:09	hh:mm
RANGE 7	4500 - 4999	00:00	hh:mm
OPERATING TIME SINCE THE LAST RESET		75:39	hh:mm
HOURS OF SERVICE		75:39	hh:mm

MERCURY DIESEL

New software references in the most up-to-date models of **SIM** and **TVM** systems.

Wiring diagram configurations for models of 3.0 liters equipped with the **EDC 17** engine control system, system that includes the System Display in the VGT activation.



INBOARD ENGINE > MERCURY Diesel > 3.0 230 > EDC17, Electronic Diesel Control, Common Rail

ACTUATE COMPONENTS \ VGT ACTUATOR (VARIABLE GEOMETRY TURBOCHARGER) \ Engine Variable Geometry Turbocharger (VGT) Actuator Position

BOOST PRESSURE	43.512	psi ...
ENGINE VARIABLE GEOMETRY TURBOCHARGER (VGT) ACT...	42	%

PCM

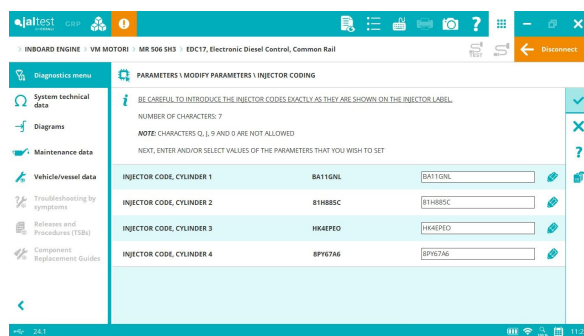
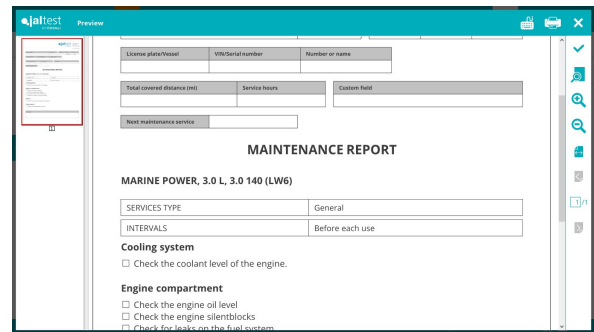
New models equipped with the **ECM GCP** engine control system such as **6.0L HO MPI**, **XS7**, **7.4L MPI**, **ZZ8S** or **ZR7**.

Vessel technical data and maintenance services in several brand models.

MARINE POWER

New software references in brand models.

Vessel technical data and maintenance services in several brand models.



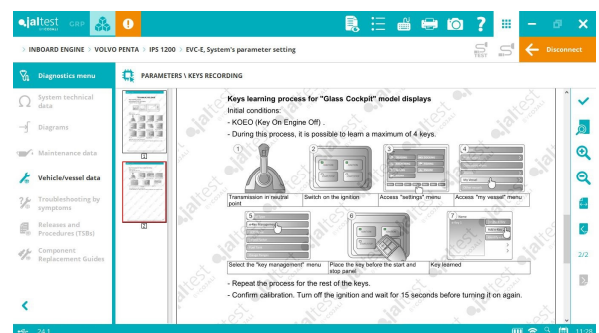
VM MOTORI

⊕ **EDC 17** engine control system in **MR506 SH3** and **MR 506 SS3** models.

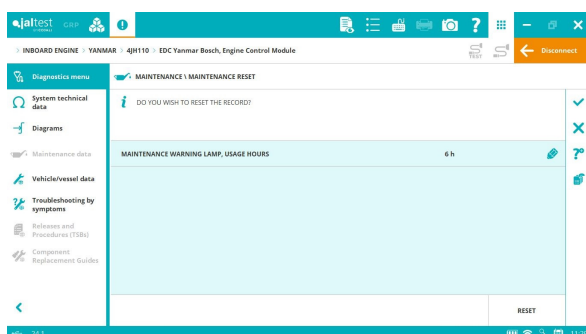
VOLVO PENTA

Coding of electronic keys (e-Key) of **EVC D** and **EVC E** systems.

Component technical data in **SUS** and **SCU** systems of **D5**, **D6** and **D7** models.



YANMAR



Yanmar Bosch engine control system, idle modification, maintenance reset, injector coding and new operation data.

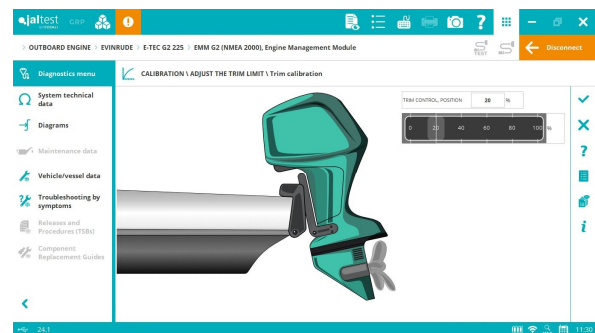
OBD-II

In the “Other connection options” section, the OBD-M brand includes the **OBD-II** system in order to have diagnostics coverage in those automotive engines under OBD-II regulation, and which are also used in the nautical segment: **VW, Hyundai, Ford, Bosch** systems, **Delphi** systems, etc.

OUTBOARD

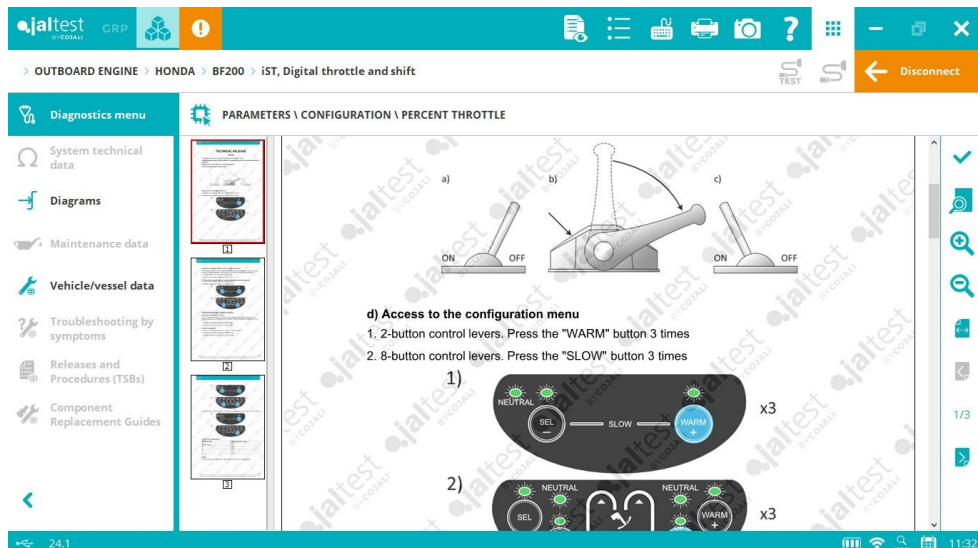
EVINRUDE

System Display in the trim calibration in the following systems: **EMM** and **EMM G2**.



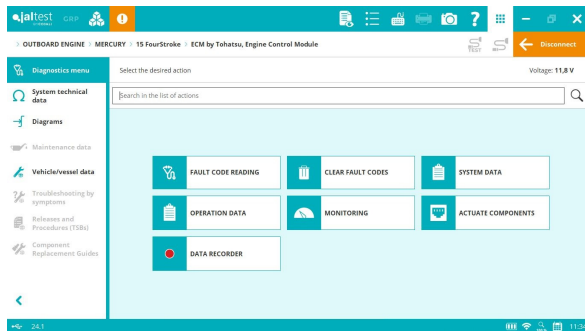
HONDA

⊕ **IST** lever electronic control system that includes manual diagnostics, acceleration percent modification, cold start activation and default value reset among other functionalities. The system is available for **BF200, BF225** and **BF250** models.



MERCURY

⊕ **ECM by Tohatsu** engine control system in the new **15, 20 FourStroke** and **15 SeaPro** models. The connection is performed through new diagnostics cables.



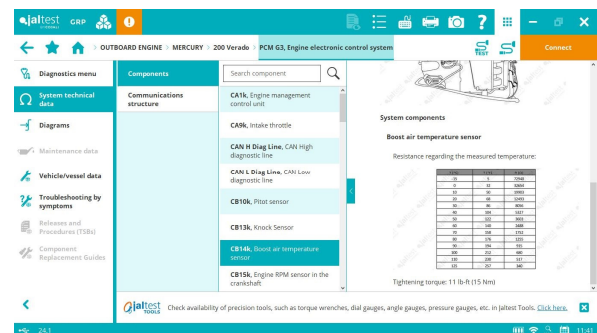
JDC 100 + JDC 632.9



New vessel technical data and maintenance services in several brand models.

Wiring diagram configurations in **135, 200 FourStroke** or **400R Verado** models, among others.

Operation data in **ECM G3** and **PCM G3** engine control systems.



System Display in the trim calibration and new FFD in diagnostics in **PCM, ECM G3, PCM-09 G3** and **PCM-112 G3** engine control systems.

SUZUKI

New software references in brand models.

TOHATSU

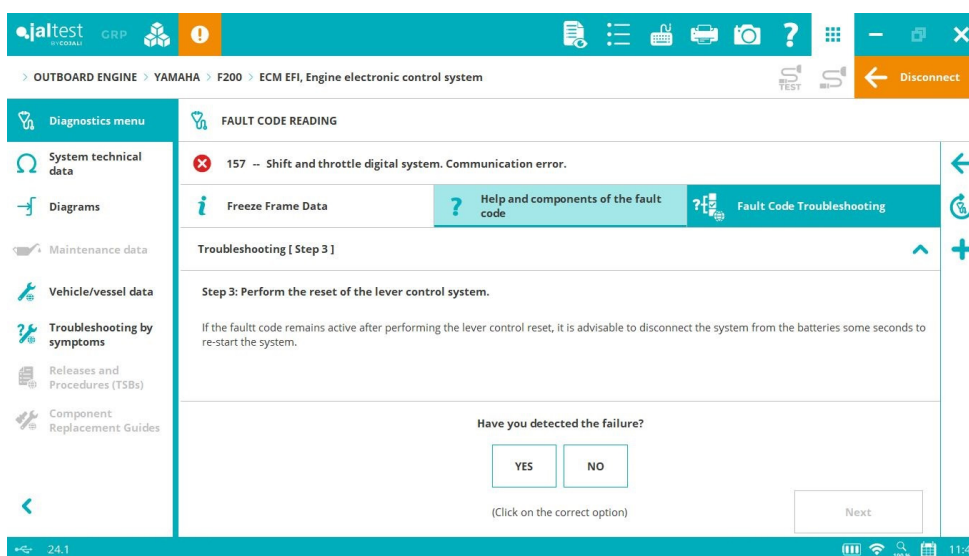
⊕ **ECM** engine control system in **MFS 9.9, MFS 15** and **MFS 20** models. The system includes the activation of the idle air control valve, the fuel pump or the injectors, among other functions.

⊕ New **JDC 632A** and **JDC 632.9** diagnostics cables for the **ECM** engine control system of 9.9, 15 and 20 HP.

YAMAHA

System Display in the trim calibration for **F200, F225, F250, F275, F300, F350, F375** and **F425** models.

SMART guides



STATIONARY ENGINE

Overall, technical data in new **SCANIA** engine types has been added.

CATERPILLAR

⊕ **C-27 / C-32** (on SAE J1939) engine control system.

C-9.3B (on SAE J1939) engine control system, activations, checks, parameters and maintenance service operations.

C-2.2 (on SAE J1939) engine control system, injector coding and Exhaust Gas Recirculation reset.

New **fault code troubleshooting guides** in **C-2.8** and **C-3.6** engine control systems.

DEUTZ

EMR4 EDC17 CV52 (on SAE J1939) control system of **TCD12.0** and **TCD16.0** engines, compression test, injector coding, Pressure Relief Valve reset and ZFL correction values adjustment of the injectors.

EMR5 EDC MD1 (on SAE J1939) engine control system, System Display, activations, system checks and maintenance service operations.

IVECO-FPT

EDC MD1 CS069 engine control system in **F34 (F5)** and **F36 (F5)** (on SAE J1939), AdBlue/DEF metering valve check, injector coding, maintenance services in the exhaust gas aftertreatment system and component replacement operations.

ISUZU

6WG1 (on SAE J1939) engine control system, forced and slow regeneration of the Diesel Particulate Filter and oil change reset.

Control system (on SAE J1939) of **4HK1**, **4JJ1** and **6HK1** engines, System Display during the recovery processes of the exhaust gas aftertreatment system.

LIEBHERR

ECU2-HD (on UDS) engine control system, activations, system checks and the special function of fault code clearance of the aftertreatment system.

EDC17 CV41 (on SAE J1939) engine control system, recovery process of the exhaust gas aftertreatment system.

VOLVO PENTA

Troubleshooting guides by symptom in the **EDC Euro 4/5 (Tier 2)** (on SAE J1708) engine control system.