



INNOVATIONS 25.2

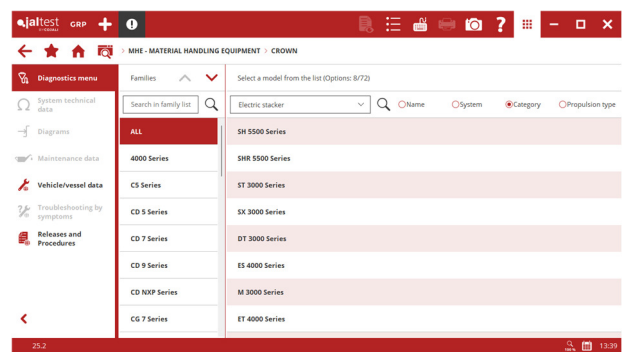
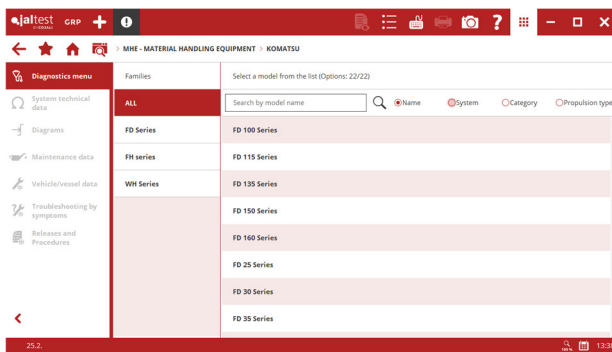
Take into account that this document is only a summary of the most relevant information of this new version. For further information, please visit Jaltest Report.

BRANDS AND MODELS

Some of the new models and brands in Jaltest are listed below.

This version, **ACE**, **FANTUZZI-FTMH**, **FENDT**, **HAMECH**, **KOMATSU** and **SMV** brands have been added.

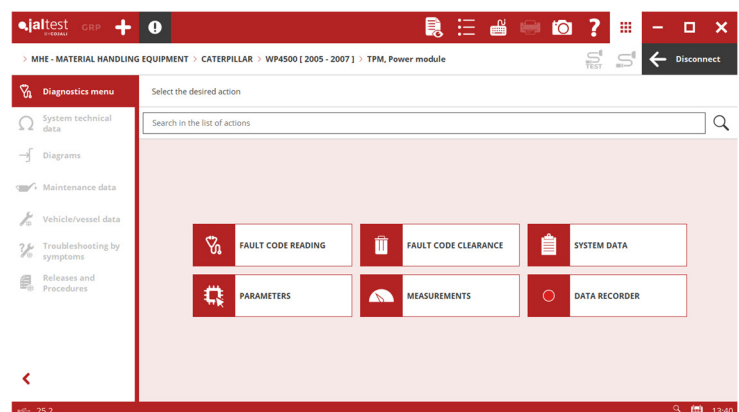
In addition, the number of models in the following brands has increased: **BAOLI** (KBD Series and KBG Series families), **CESAB** (P Series, S Series, R Series and M Series families), **CROWN** (electric vehicle families) and **YALE** (MP and MPE families), in which models of different types of vehicles, both electric and internal combustion engines, have been added.



DIAGNOSTICS AND SYSTEMS

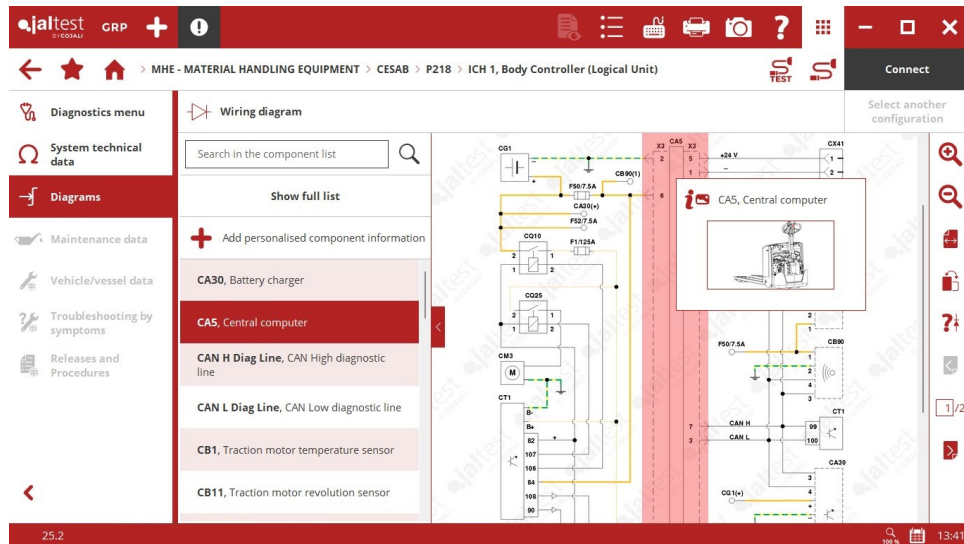
CATERPILLAR

- ⊕ **TPM** power module for **WP Series** electric pallet jacks.



CESAB

Wiring diagram configuration in **ICH1, ICH2, MCU** and **MC** central computers for pallet jacks, stackers and electric retractable forklifts of **P Series, S Series** and **R Series** families than include images and component technical data.



CROWN

New **JDC 574A9** cable to communicate with the power modules equipped in pallet jacks, stackers, order-picking pallet trucks, retractable forklifts and electric counterbalance trucks of the brand.

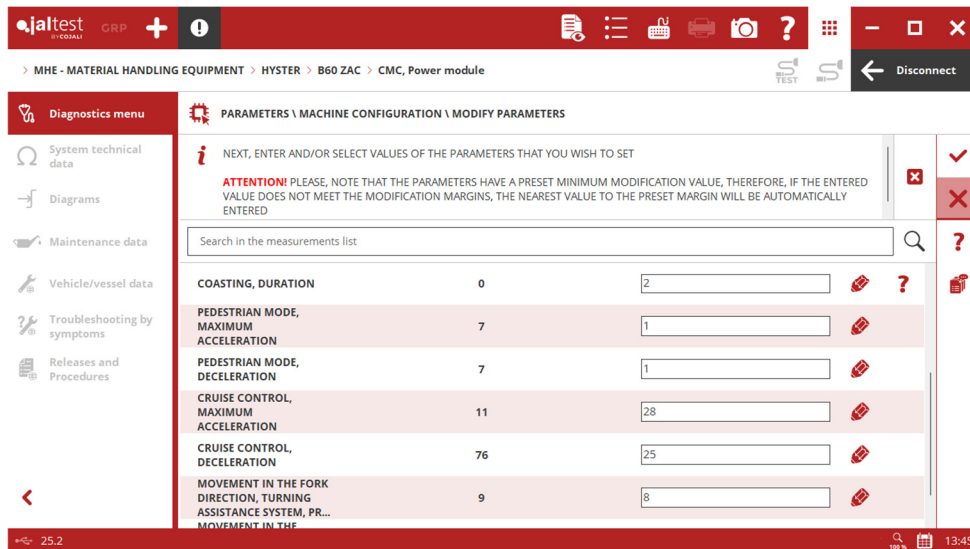


⊕ **ZPM** power modules for pallet jacks, stackers, order-picking pallet trucks, retractable forklifts and electric counterbalance forklifts of the brand.

HYSTER

⊕ **CMC2** and **MCT** power modules for **AP Series**, **B Series** and **P Series** pallet jacks.

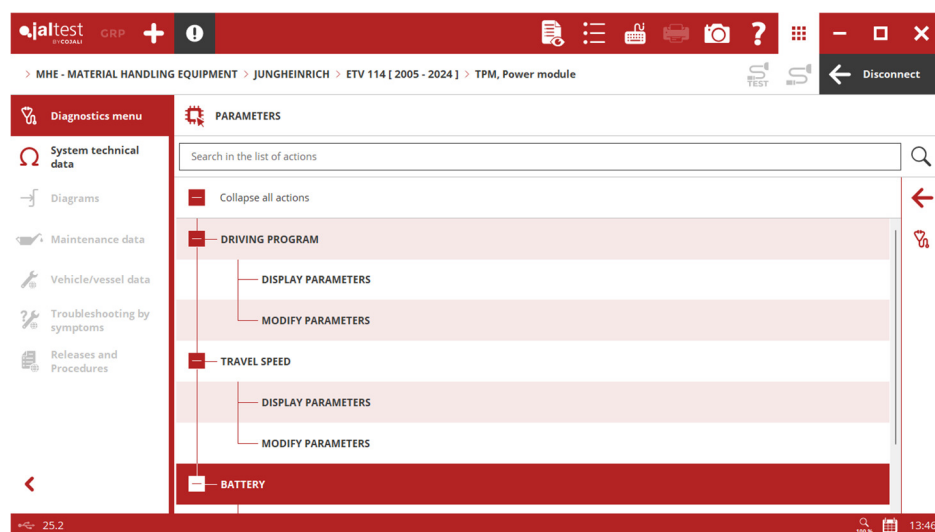
CMC and **DMC** power modules for electric pallet jacks, parameter settings.



JUNGHEINRICH

⊕ **TPM** power module for **EJE Series** electric pallet jacks with fault code reading, real time measurements and parameters.

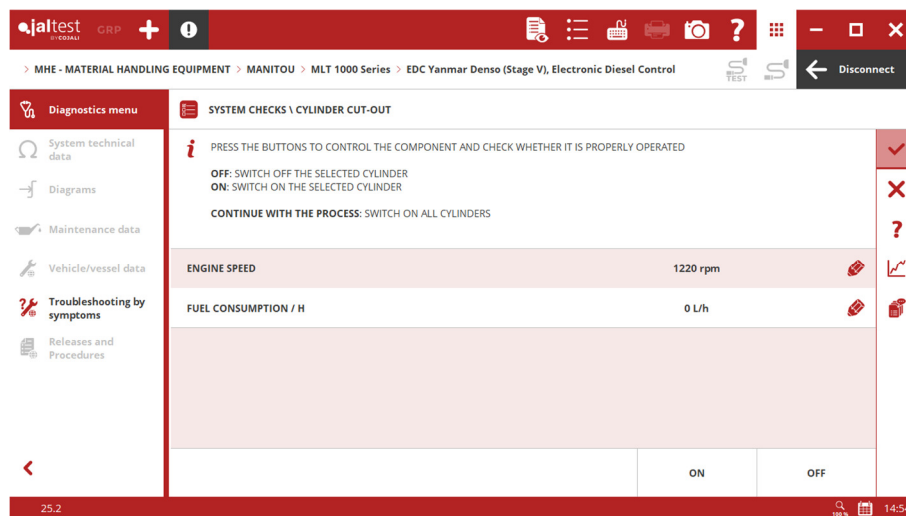
Several systems of the brand add new advanced functionalities such as parameter settings, calibrations and maintenance. It is important to note **TPM** central computer, **HCU** hydraulic system, **DCS** steering power module, **JOYSTICK** electronic module and **DC** instrument cluster for **ETV 1xx** retractable forklifts.



Wiring diagram configuration in **TPM** central computer and **DCS** power module for order-picking pallet trucks of **ECE Series** and **ECC Series** families that include images and component technical data.

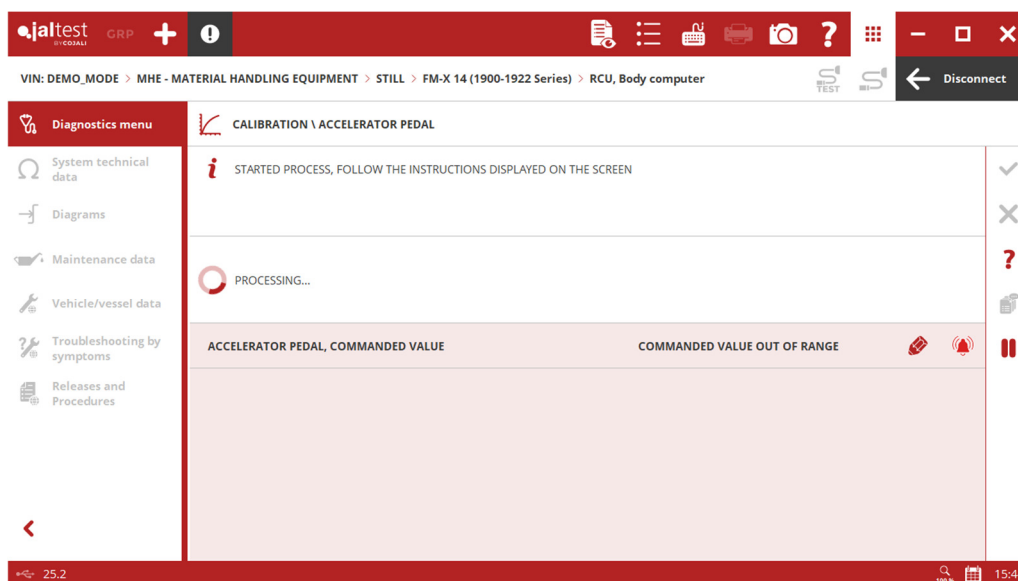
MANITOU

⊕ **Yanmar EDC Denso (Stage V)** engine control system for telescopic handlers and rotating telescopic handlers. The system includes fault code reading and clearance, measurements, activations, checks, calibrations and maintenance operations.



STILL

RCU central computer for **FM Series** retractable forklifts, parameter settings and calibrations.



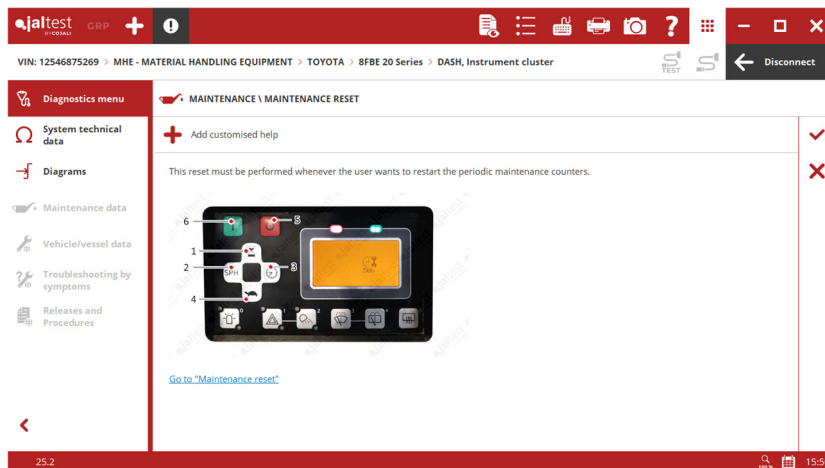
TOYOTA

New **JDC 573A9** cable to communicate with the forklift systems with internal combustion engines of the brand.



⊕ **Toyota EDC Denso** engine control system for forklifts with **8FD Series** internal combustion engines that includes Diesel Particulate Filter regeneration.

New functionalities in the instrument cluster system, transmission, hydraulic systems and electronic modules in **8FBE and 8FBM Series** electric forklifts, including calibrations, maintenance operations and parameter settings.



Electric actuator configurations in **MCU2** central computer of **Reflex H Series** family retractable forklifts.

jaltest GRP + !

MHE - MATERIAL HANDLING EQUIPMENT > TOYOTA > 8FD 20 Series > EDC Toyota Denso, Electronic Diesel Control

TEST S Disconnect

Diagnostics menu

- System technical data
- Diagrams
- Maintenance data
- Vehicle/vessel data
- Troubleshooting by symptoms
- Releases and Procedures

MAINTENANCE \ PARTICULATE FILTER REGENERATION

INITIAL CONDITIONS:

- THE ENGINE HAS TO BE AT IDLE
- THE TEMPERATURE OF THE COOLANT FLUID MUST EXCEED 50 °C.
- PARKING BRAKE ACTIVATED
- THE ACCELERATOR PEDAL MUST NOT BE PRESSED DURING THE PROCESS

IMPORTANT:

IT IS NOT ADVISABLE TO CANCEL THE PROCESS ONCE IT HAS STARTED; IF IT IS CANCELLED, THE IGNITION MUST BE TURNED OFF AND ON IN ORDER TO PERFORM A "SWITCH-OFF" RESET OF THE CONTROL UNIT

SOOT CONTENT ON THE PARTICULATE FILTER, PERCENTAGE	---	
ENGINE SPEED, MEASURED VALUE	2885 rpm	
COOLANT TEMPERATURE	90 °C	✓
ACCELERATOR PEDAL POSITION	17 %	

25.2 100 % 15:46

ZAPI

- ⊕ **ZPM (CAN)** power module for electrical machines.

jaltest GRP + !

MHE - MATERIAL HANDLING EQUIPMENT > ZAPI > Power Module Inverter > ZPM (CAN), Power module

TEST S Disconnect

Diagnostics menu

- System technical data
- Diagrams
- Maintenance data
- Vehicle/vessel data
- Troubleshooting by symptoms
- Releases and Procedures

MEASUREMENTS \ MEASUREMENT SELECTION

SELECTED MEASUREMENTS ARE SHOWN NEXT, USE THE LOWER BUTTONS TO PERFORM THE DESIRED CHANGES

	NAME	VALUE	UNITS
1	ACCELERATOR POSITION	ON	
2	RAISING POSITION	ON	
3	WHEEL TURNING ANGLE SENSOR	ON	
4	POWER MODULE, TEMPERATURE	DEMO_MODE	°C
5	AUXILIARY CURRENT (I)	OFF	
6	SAFETY SWITCH	ON	
7	ELECTRIC MOTOR, SIGNAL FREQUENCY	DEMO_MODE	Hz

PREVIOUS PAGE NEXT PAGE

PAGE 1/2

25.2 100 % 15:52