



**jaltest**  
**OHW**  
OFF-HIGHWAY VEHICLES

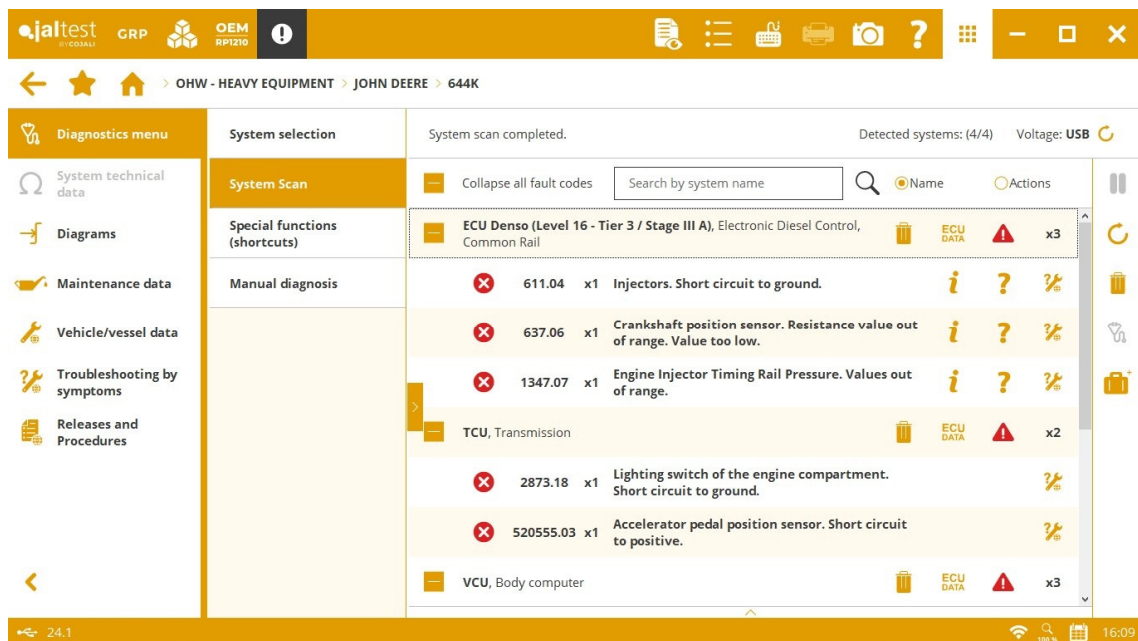
INNOVATIONS 24.1

# SOFTWARE INNOVATIONS

The new software version Jaltest 24.1 once again offers more improvements and innovations that consolidate this tool as a benchmark in multi-brand diagnostics for commercial vehicles, agricultural equipment, OHW equipment, material handling equipment and vessels.

With the innovations of the graphic interface, it is possible to:

- Add new formats to the table cells and highlight data.
- Attach the diagnostics report to a Jaltest Feedback.
- Keep the expert mode active in each software login.
- Delete fault codes directly from the results of a system scan process.



# BRANDS AND MODELS

---

Take into account that this document is only a summary of the most relevant information of this new version. For further information, please visit Jaltest Report.

## OHW - HEAVY EQUIPMENT

This version includes **LJUGBY MASKIN** and **VÖGELE** brands.

### LIEBHERR

New models for self-propelled cranes.

### XCMG

25 new models.

## OHW - COMPACT EQUIPMENT

New brands such as **LJUGBY MASKIN**, **MENZI MUCK**, **MULTIONE** and **VM LOADER**, and new models available for **BOBCAT**, **XCMG** and **YANMAR** brands.

## STATIONARY ENGINE

New models available for **CUMMINS**, **DEUTZ** and **SCANIA** brands.

## MULTI-PURPOSE VEHICLE

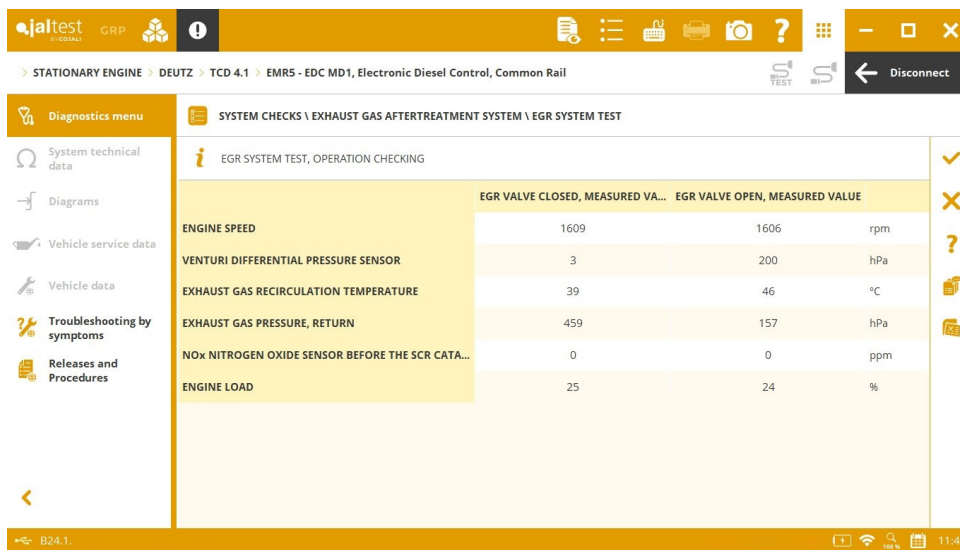
This version includes new models in the **BUCHER** brand.

# DIAGNOSTICS AND SYSTEMS

---

Take into account that this document is only a summary of the most relevant information of this new version. For further information, please visit Jaltest Report.

It is important to note the development of new advanced actions such as the exhaust gas aftertreatment system checks in the **EMR5 EDC MD1** engine control system in **STAGE V Deutz** engines. This system is available for STATIONARY ENGINE or other brands such as **AMMAN**, **DYNAPAC** or **WEIDEMANN**.



## OHW - HEAVY EQUIPMENT

### BOMAG

**TCD 12.0 EMR4 EDC17 CV52** (on SAE J1939) engine control system, system checks, parameters and maintenance services.

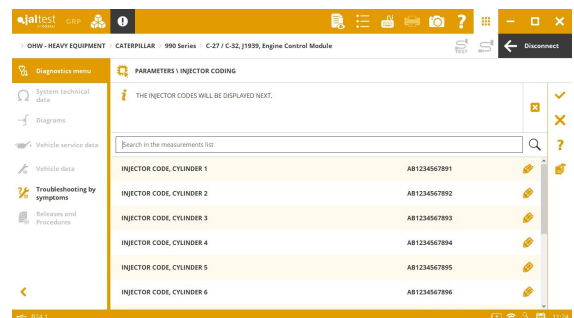
### CASE CE

New wiring diagram configurations available for **G Series** models.

### CATERPILLAR

⊕ **C-27 / C-32** (on SAE J1939) engine control system.

**C-9.3B** (on SAE J1939) engine control system, activations, checks and other advanced functions.

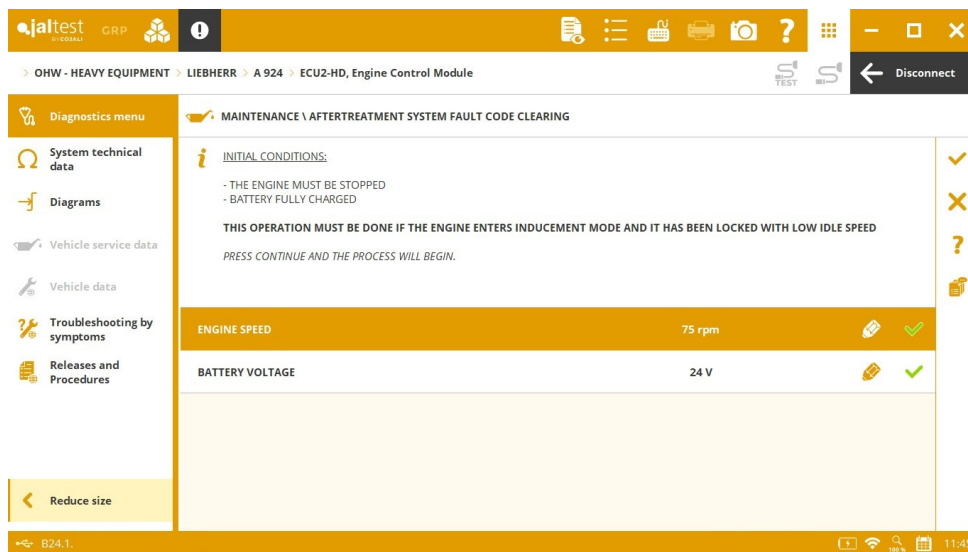


### KOMATSU

New wiring diagram configurations in the **PUMP** system for **PC-8** and **ENG** system for **PC-7**.

### LIEBHERR

**ECU2-HD** (on UDS) engine control system, activations, system checks and the special function of fault code clearance of the aftertreatment system.



## SANY

**6WGI** (on SAE J1939) engine control system, forced and slow regeneration of the Diesel Particulate Filter and oil change reset.

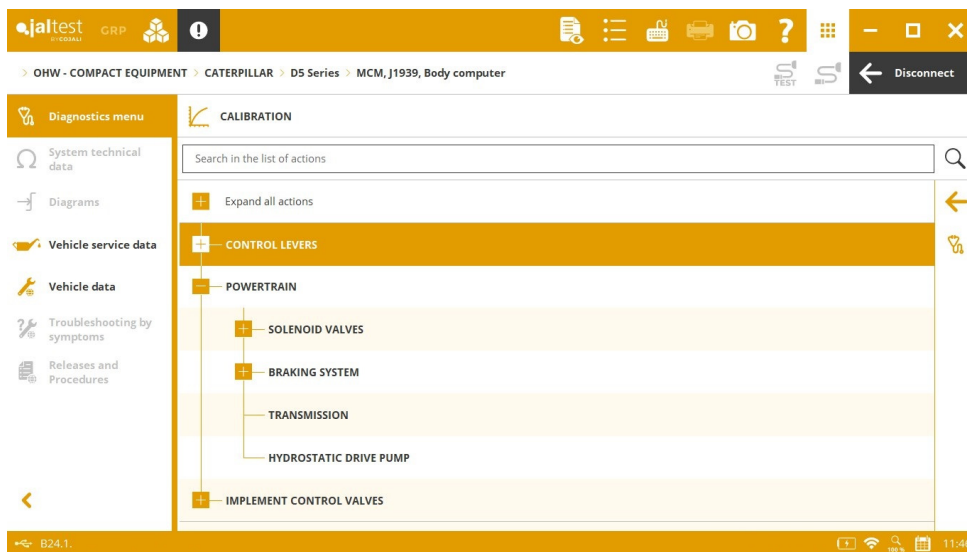
## VOLVO CE

**HMICU** (on SAE J1939) central computer, accelerator pedal check for **L Series (XY H)** models.

## OHW - COMPACT EQUIPMENT

Take into account that this document is only a summary of the most relevant information of this new version. For further information, please visit Jaltest Report and coverage on Jaltest website.

New advanced actions developed in the **MCM** central computer system of **CATERPILLAR** for **D Series** compact dozers.



## CASE CE

**FPT EDC MD1 CS069** (on SAE J1939) engine control system, AdBlue/DEF dosing valve check, injector coding, maintenance services in the exhaust gas aftertreatment system and component replacement operations.

## CATERPILLAR

**MCM** central computer for **D Series** (on SAE J1939), calibrations of the control lever, the power train and the implement control valves.

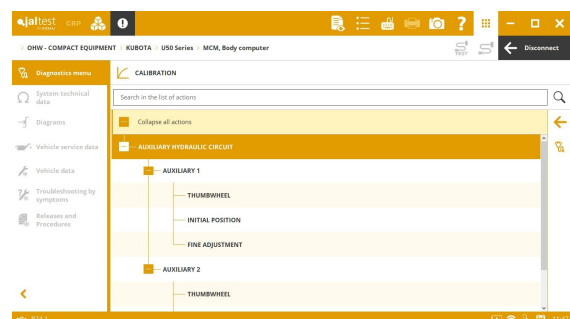
**C-2.2** engine control system for **200 Series** (on SAE J1939), injector coding and Exhaust Gas Recirculation reset.

## KOMATSU

New wiring diagram configurations in **PC70US-8, PC80-8, PC30-5, PC40-5** and **PC50-5** models.

## KUBOTA

⊕ **MCM** (on SAE J1939) central computer.



## LIEBHERR

**ECU2-HD** (on UDS) engine control system, activations, system checks and the special function of fault code clearance of the aftertreatment system.

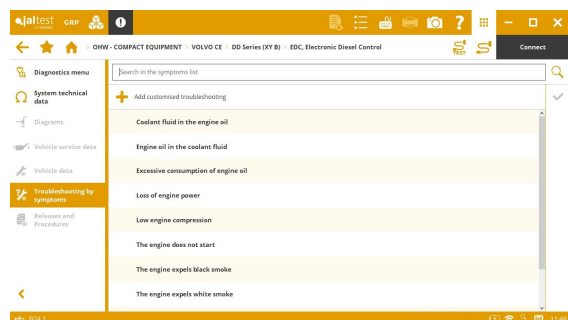
## NEW HOLLAND

New wiring diagram configurations in **WC Series** wheel loaders and **L Series** skid-steer loaders.

## VOLVO CE

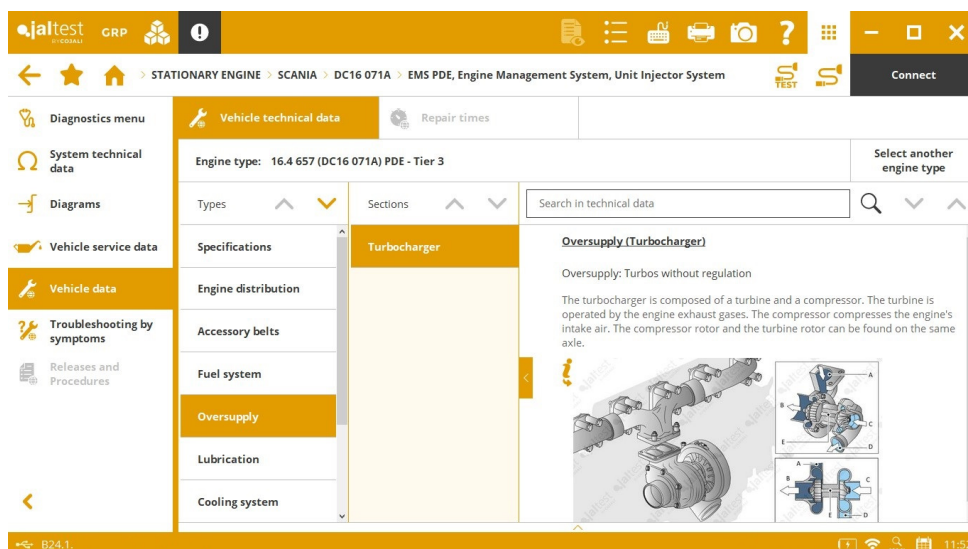
**HMICU** (on SAE J1939) central computer, accelerator pedal check for **L Series (XY H) Compact**.

**Troubleshooting guides by symptom** in the **EDC Euro 4/5 (Tier 2)** (on SAE J1708) engine control system.



## STATIONARY ENGINE

Overall, technical data in new **SCANIA** engine types has been added.



## CATERPILLAR

⊕ **C-27 / C-32** (on SAE J1939) engine control system.

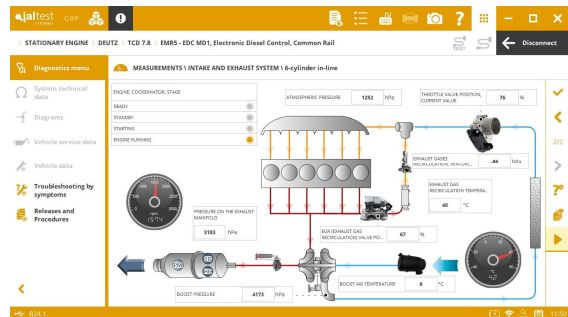
**C-9.3B** (on SAE J1939) engine control system, activations, checks, parameters and maintenance service operations.

**C-2.2** (on SAE J1939) engine control system, injector coding and Exhaust Gas Recirculation reset.

New **fault code troubleshooting guides** in **C-2.8** and **C-3.6** engine control systems.

## DEUTZ

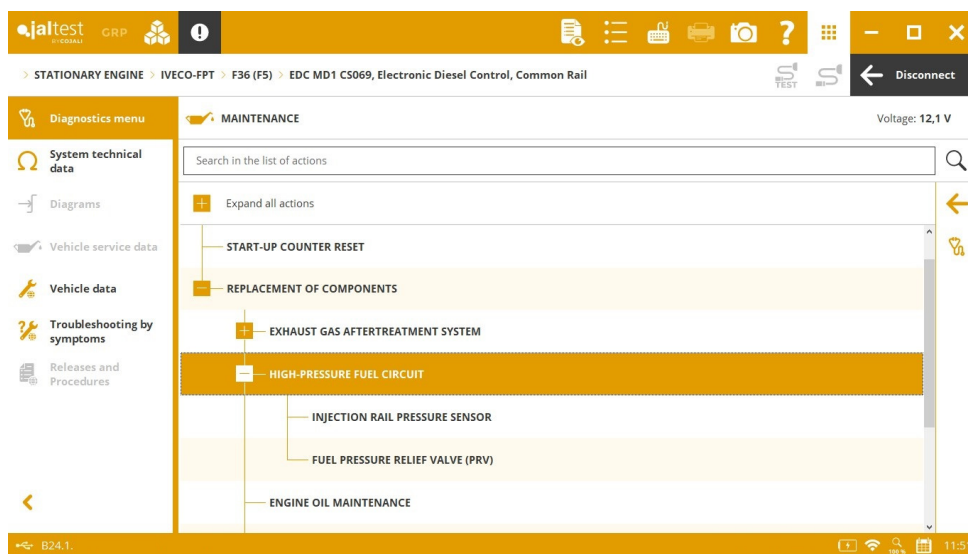
**EMR4 EDC17 CV52** (on SAE J1939) control system of **TCD12.0** and **TCD16.0** engines, compression test, injector coding, Pressure Relief Valve reset and ZFL correction values adjustment of the injectors.



**EMR5 EDC MD1** (on SAE J1939) engine control system, System Display, activations, system checks and maintenance service operations.

## IVECO-FPT

**EDC MD1 CS069** engine control system in **F34 (F5)** and **F36 (F5)** (on SAE J1939), AdBlue/DEF dosing valve check, injector coding, maintenance services in the exhaust gas aftertreatment system and component replacement operations.



## ISUZU

**6WGI** (on SAE J1939) engine control system, forced and slow regeneration of the Diesel Particulate Filter and oil change reset.

Control system (on SAE J1939) of **4HK1**, **4JJI** and **6HK1** engines, System Display during the recovery processes of the exhaust gas aftertreatment system.



## LIEBHERR

**ECU2-HD** (on *UDS*) engine control system, activations, system checks and the special function of fault code clearance of the aftertreatment system.

**EDC17 CV41** (on *SAE J1939*) engine control system, recovery process of the exhaust gas aftertreatment system.

## VOLVO PENTA

**Troubleshooting guides by symptom** in the **EDC Euro 4/5 (Tier 2)** (on *SAE J1708*) engine control system.

## MULTI-PURPOSE VEHICLE

Overall, extended diagnostics coverage for engine control systems. It is important to note a technical release to reset the maintenance interval indicator in **SCHMIDT**.

