



INNOVATIONS 25.1

SOFTWARE INNOVATIONS

- An access to the list of **ADDITIONAL MODULES** has been added to the main menu so that all users can consult the additional modules available.
- Technical information related now also to the **components of the diagram by model**.
- During the connection to a system, the possibility of guiding the user to a specific action such as the calibration of the control unit is enabled, in the event that during the connection it is detected that the system is out of calibration.
- Access to the **manual diagnostics** process is enabled **from troubleshooting guides**.
- Possibility of relating videos to particular fault codes. This allows a video considered of interest to be related to a specific fault code that can be useful in future diagnostics processes.
- It is now possible to view the brands and models offered by Jaltest coverage in its different modules, even without a licence, in order to easily consult the possible coverage to be subscribed.
- Possibility of accepting the third-party data transfer during the installation process of Jaltest Diagnostics software in order to **create new business opportunities for your workshop**.
- Since 25.1 version, Jaltest offers the possibility of subscribing a new module and vehicle licence in its equipment, **Jaltest GSE**, in order to provide diagnostics coverage to airport equipment and vehicles.

Take into account that this document is only a summary of the most relevant information of this new version. For further information, please visit Jaltest Report.

BRANDS AND MODELS

OHW - HEAVY EQUIPMENT

The number of models in **DYNAPAC**, **HAMM**, **JCB**, **JOHN DEERE CE** and **VÖGELE** brands has been expanded.

OHW - COMPACT EQUIPMENT

The number of models has been expanded in brands such as **DEVELON**, **HAMM** and **JCB**, which includes 10 new models.

STATIONARY ENGINE

This version includes **MWM** brand.

The number of models in **CUMMINS** brand has been expanded.

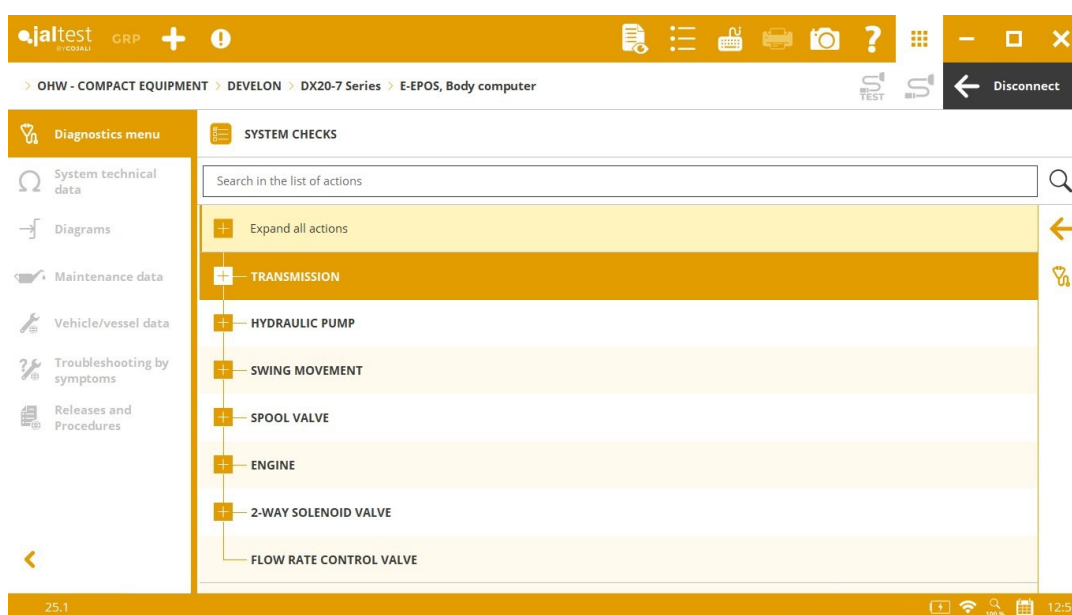
MULTI-PURPOSE VEHICLE

This version includes **RASCO** brand.

The number of models in **SCHMIDT** brand has been expanded.

DIAGNOSTICS AND SYSTEMS

It is important to note the development of the new **E-EPOS** (RS232) central computer in **DX-7 Series** models. This system is available in OHW - HEAVY EQUIPMENT and OHW - COMPACT EQUIPMENT in **DEVELON** brand.



OHW - HEAVY EQUIPMENT

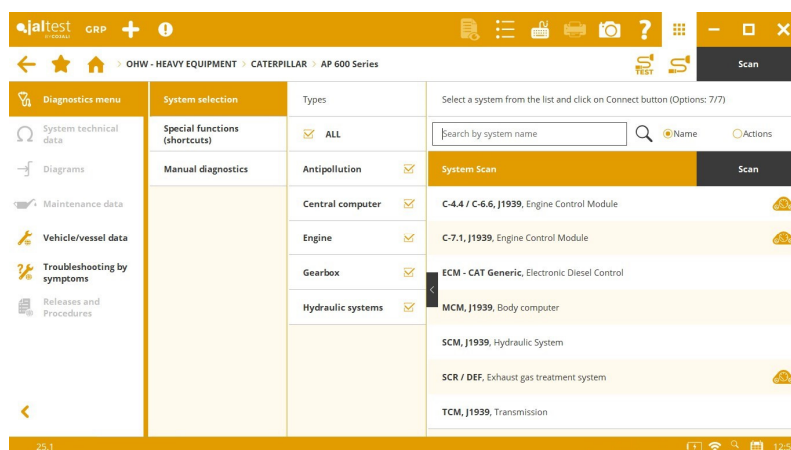
CATERPILLAR

In **AP Series** road pavers.

- ⊕ **MCM** (SAE J1939) system
- ⊕ **TCM** (SAE J1939) system
- ⊕ **SCM** (SAE J1939) system

In the **700 Series** model.

- ⊕ **Chassis** system
(SAE J1939)
- ⊕ **TCCM** (CDL) system



Fault code troubleshooting guides in several systems such as the **C-9.3** engine control system and the **ARD** and **SCR/DEF** exhaust gas aftertreatment systems.

CLASS

ECU3 (UDS) engine control system, maintenance reset of the exhaust gas aftertreatment system.

DEVELON

- ⊕ **E-EPOS** (RS232) system for **DX-7 Series** models.

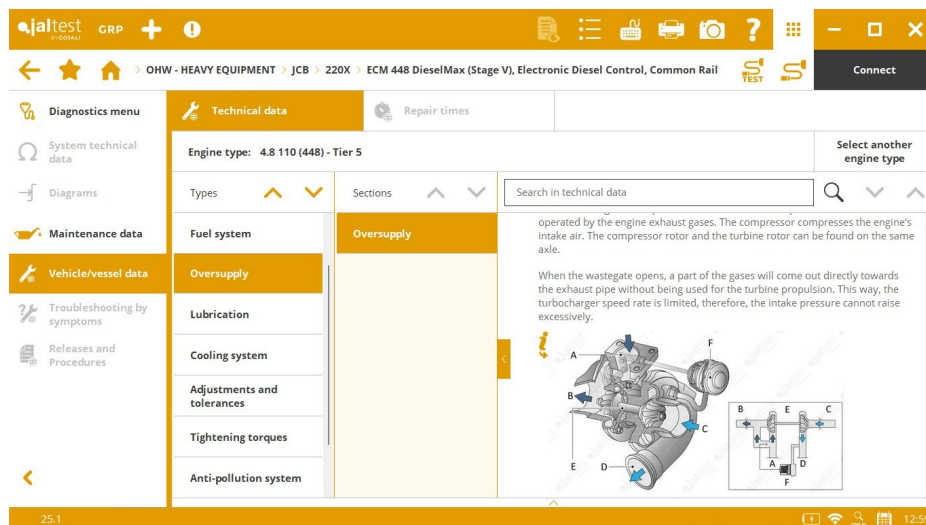
DL06/DL08, STAGE V (SAE J1939) engine control system, activations, checks, parameters and maintenance services.

JCB

- ⊕ **Keypad 1** (SAE J1939) instrument cluster for wheel loaders.
- ⊕ **Keypad 2** (SAE J1939) instrument cluster for wheel loaders.
- ⊕ **CLUSTER** (on SAE J1939) instrument cluster for telescopic wheel loaders.

IC (SAE J1939) instrument cluster for wheel loaders, including maintenance reset.

In general, machine technical data for **JCB** engine types have been added.



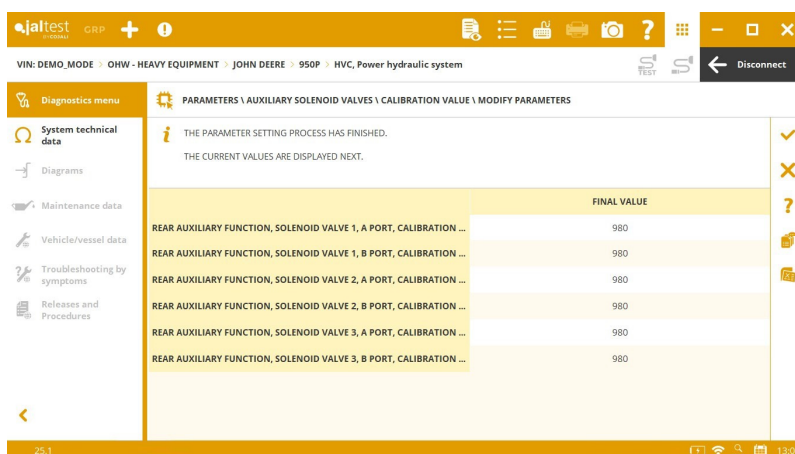
JOHN DEERE CE

In **L** and **P Series** dozers.

- ⊕ **SMI** (SAE J1939) system
- ⊕ **ATC** (on SAE J1939) system

HVC hydraulic system for dozer, parameter settings of the thrust blade.

TCU (SAE J1939) transmission for dozer, parameter settings of the speed control.



KOMATSU

TRANS, monitor R (SAE J1939) transmission in **WA300-7** and **WA400-7** models, measurements. Parameter settings and maintenance reset.

New wiring diagram configurations in the **TRANS** (SAE J1939) system for **WA 300-5 Series, WA 400-5 Series, WA 500-5, WA 600-5, WA 300-6, WA 400-6 and WA 400-6EO Series** models.

OHW - COMPACT EQUIPMENT

Advanced actions have been developed in the **DL06/DL08 Stage V** (SAE J1939) engine control system of **DOOSAN** such as parameter settings, maintenance reset, activations and system checks. This system is in several brands, such as **DEVELON**.

CATERPILLAR

C-3.4B (SAE J1939) engine control system, inducement mode reset, caused by problems in the exhaust gas aftertreatment system.

C-7.1 (SAE J1939) engine control system, system activations.

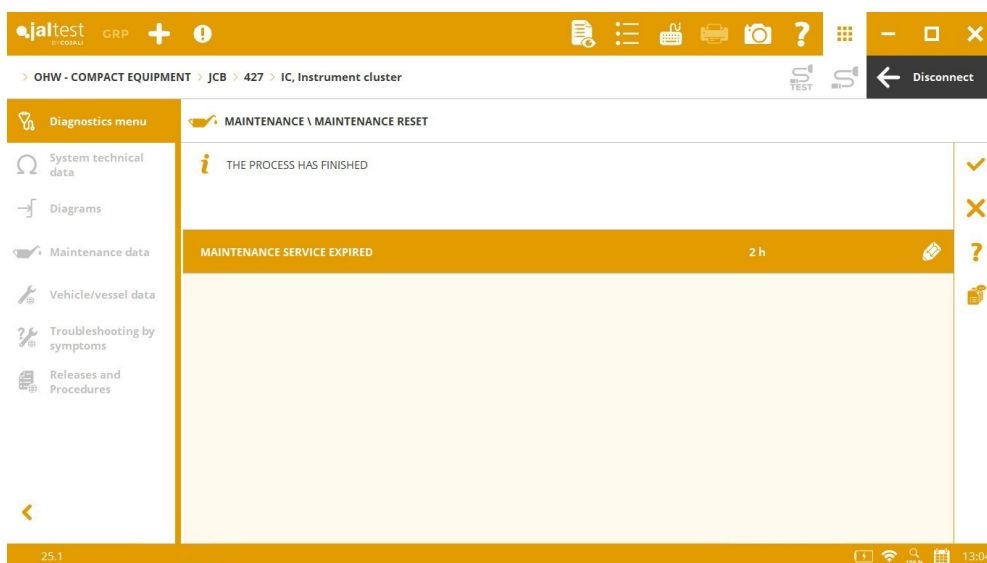
JCB

In **Hydradig Series** models, new systems communicating via SAE J1939.

- ⊕ **Keyboard** instrument cluster.
- ⊕ **Keypad 1** instrument cluster.
- ⊕ **Keypad 2** instrument cluster.
- ⊕ **IOM 1, IOM 2, IOM3** and **IOM 4** input and output signal control modules.

In wheel loaders.

- ⊕ **Keypad 1** instrument cluster.
- ⊕ **Keypad 2** instrument cluster.
- ⊕ **HYD** (SAE J1939) hydraulic system for telescopic wheel loaders.



KOMATSU

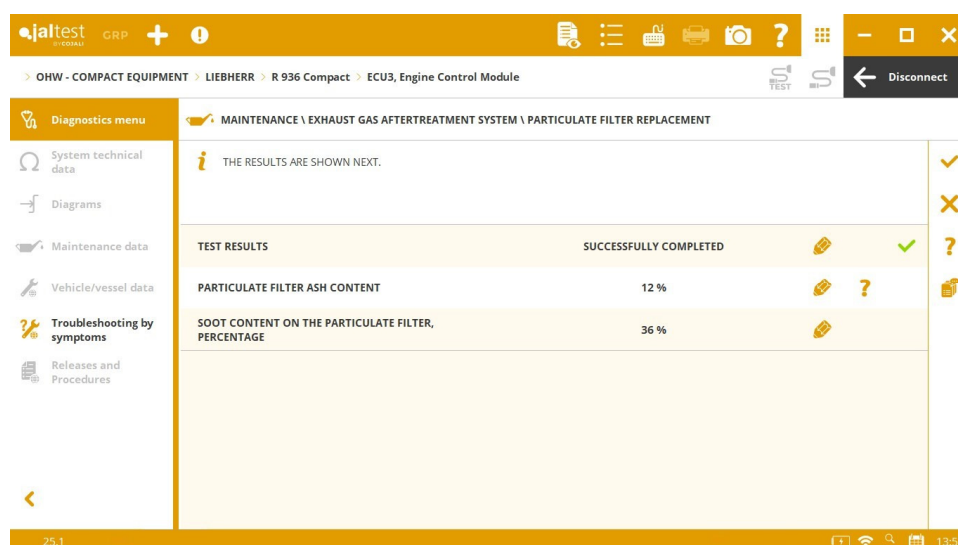
New wiring diagram configurations in the **TRANS** (SAE J1939) transmission for **WA 100-5 Series** and **WA 200-5 Series** models.

KUBOTA

New wiring diagram configurations in the **E-CDIS** (SAE J1939) engine control system for **KX Series**, **R Series** and **S Series** models.

LIEBHERR

ECU3 (UDS) engine control system, System Display of the fuel system and maintenance reset after the Diesel Particulate Filter replacement.

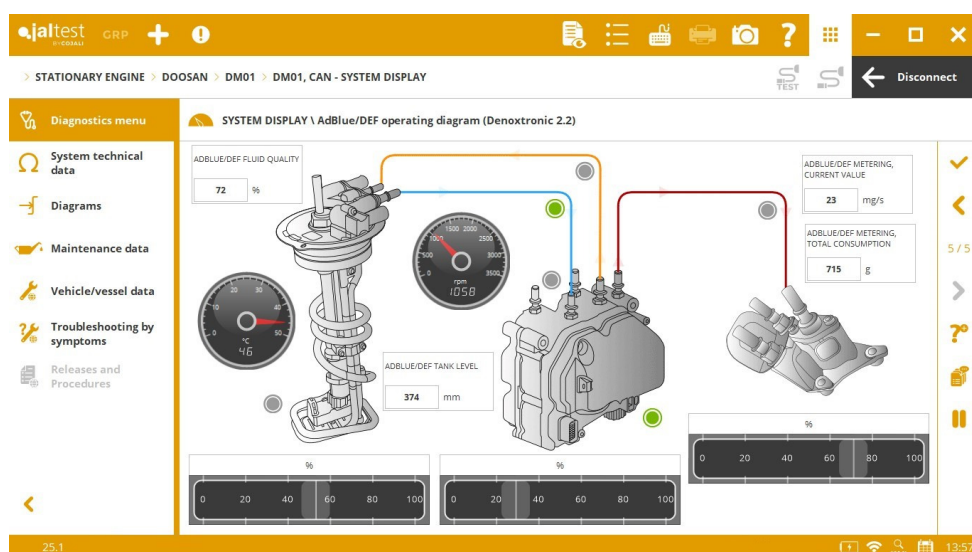


WACKER NEUSON

IC (SAE J1939) instrument cluster for wheel loaders, maintenance reset.

STATIONARY ENGINE

In general, the System Display has been added in the **DOOSAN DM01, DM02, DM03** (SAE J1939) engine control systems.

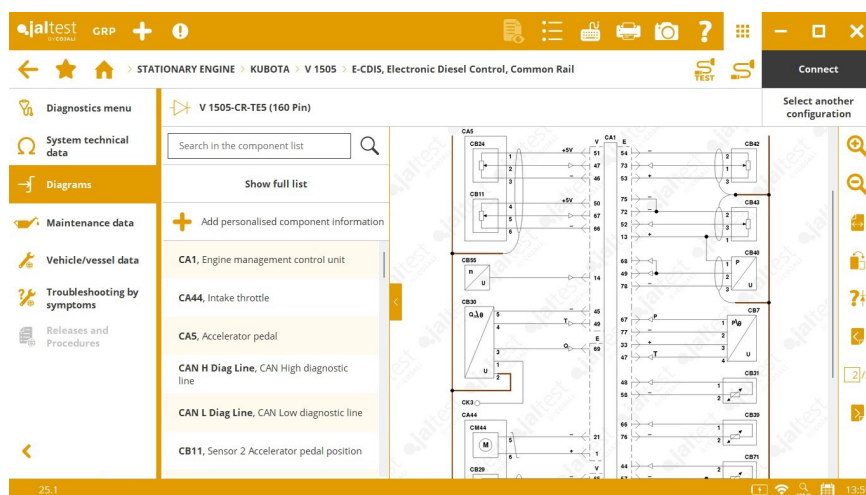


CATERPILLAR

Fault code troubleshooting guides in **C-9.3** engine control systems and the **SCR / DEF** exhaust gas aftertreatment system.

KUBOTA

EControls ECM 4G (SAE J1939) engine control system, control check of the closed-loop lambda/O₂ sensor mixture and compression test.

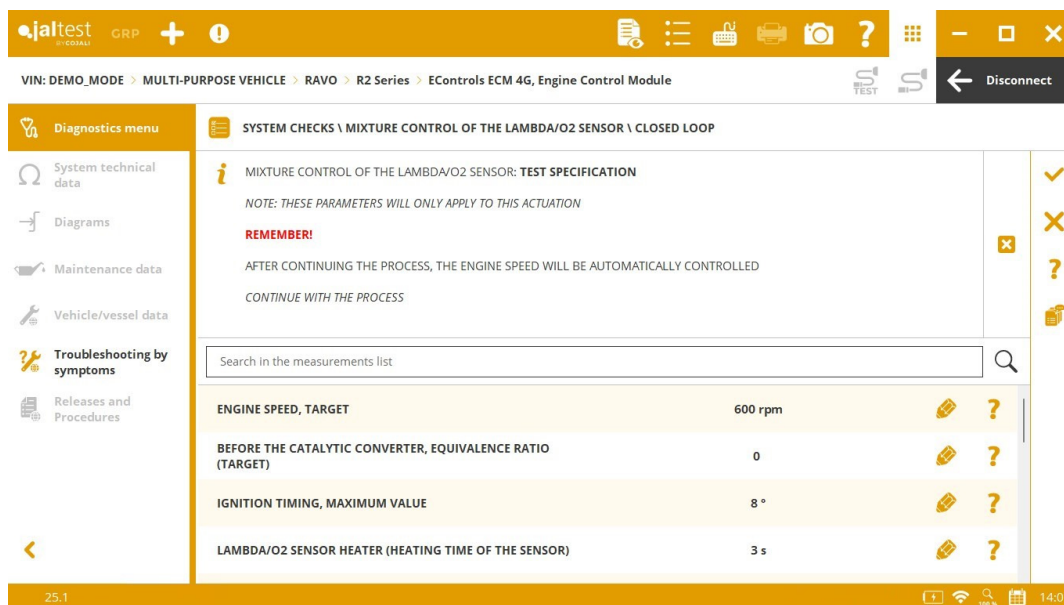


LIEBHERR

ECU3 (UDS) engine control system, System Display for the fuel system and maintenance reset after the Diesel Particulate Filter replacement.

MULTI-PURPOSE VEHICLE

Overall, extended diagnostics coverage for engine control systems. It is important to note new functionalities in the **EControls ECM 4G** system in **GLOBAL ENVIRONMENTAL** and **RAVO** brands.



VIN: DEMO_MODE > MULTI-PURPOSE VEHICLE > RAVO > R2 Series > EControls ECM 4G, Engine Control Module

SYSTEM CHECKS \ MIXTURE CONTROL OF THE LAMBDA/O2 SENSOR \ CLOSED LOOP

MIXTURE CONTROL OF THE LAMBDA/O2 SENSOR: TEST SPECIFICATION

NOTE: THESE PARAMETERS WILL ONLY APPLY TO THIS ACTUATION

REMEMBER!

AFTER CONTINUING THE PROCESS, THE ENGINE SPEED WILL BE AUTOMATICALLY CONTROLLED

CONTINUE WITH THE PROCESS

Search in the measurements list

ENGINE SPEED, TARGET	600 rpm		?
BEFORE THE CATALYTIC CONVERTER, EQUIVALENCE RATIO (TARGET)	0		?
IGNITION TIMING, MAXIMUM VALUE	8 °		?
LAMBDA/O2 SENSOR HEATER (HEATING TIME OF THE SENSOR)	3 s		?

25.1

14:01