



INNOVATIONS 25.2

Take into account that this document is only a summary of the most relevant information of this new version. For further information, please visit Jaltest Report.

BRANDS AND MODELS

OHW - HEAVY EQUIPMENT

This version includes the **ACE** brand.

The number of models in **DOOSAN, HITACHI, HYUNDAI CE, JCB, JOHN DEERE CE, LIEBHERR, SANY, VÖGELE, VOLVO CE** and **XCMG** brands has been expanded.

OHW - COMPACT EQUIPMENT

This version includes the **ACE** brand.

The number of models in **HITACHI, HYUNDAI CE, JCB, JOHN DEERE, KRAMER, VOLVO CE** and **WACKER NEUSON** brands has been expanded.

STATIONARY ENGINE

The number of models in the **CUMMINS** brand has been expanded.

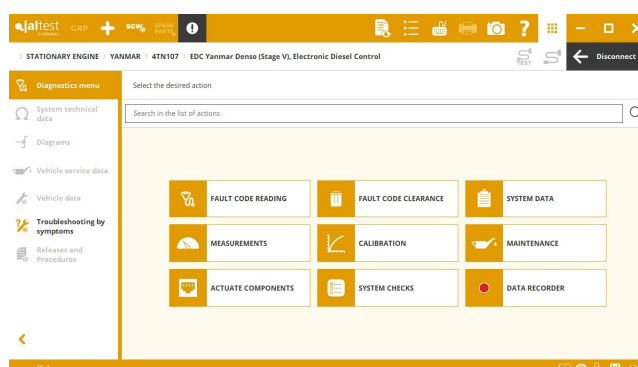
MULTI-PURPOSE VEHICLE

This version includes the **CARON** brand.

The number of models in the **MULTICAR** brand has been expanded.

DIAGNOSTICS AND SYSTEMS

It is important to note the development of the new **Yanmar Stage V** engine control system, with the **EDC Denso** system. This system is available, among other connection routes, in **4TN107** model of **YANMAR** brand in STATIONARY ENGINE.



OHW - HEAVY EQUIPMENT

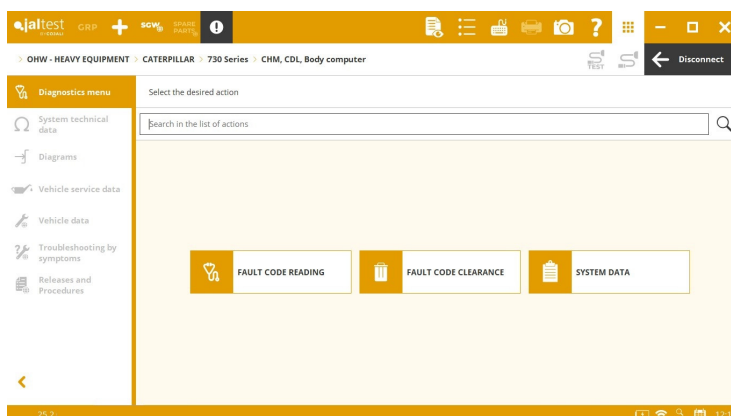
BOSCH REXROTH

- ⊕ **BODAS RC Series 31** (on CAN) programmable control unit.

CATERPILLAR

- ⊕ **CHM** (on CDL) central computer in **700 Series** models.

TCCM (on CDL) transmission in **700 Series** models, advanced functions in actuations.



Fault code troubleshooting guides in several systems such as the **C-9.3** engine control system and **ARD** and **SCR / DEF** exhaust gas aftertreatment systems.

New wiring diagram configurations in **C-4.4**, **C-7.1**, **C-13**, **C-15** and **C-18** engine control systems in **MCM** (on SAE J1939 and CDL) central computer and in **SCR/DEF** (on SAE J1939) exhaust gas aftertreatment system.

DEVELON

- E-EPOS** (on RS232) system in **DX-7 Series** models, operation data.

HITACHI

- ⊕ **MC** (on SAE J1939) central computer in **ZX 7 Series** models.

HYUNDAI CE

- ⊕ **MCM** (on RS232) central computer for **9 Series** excavators.
- ⊕ New **JDC 572.9** diagnostics cable.

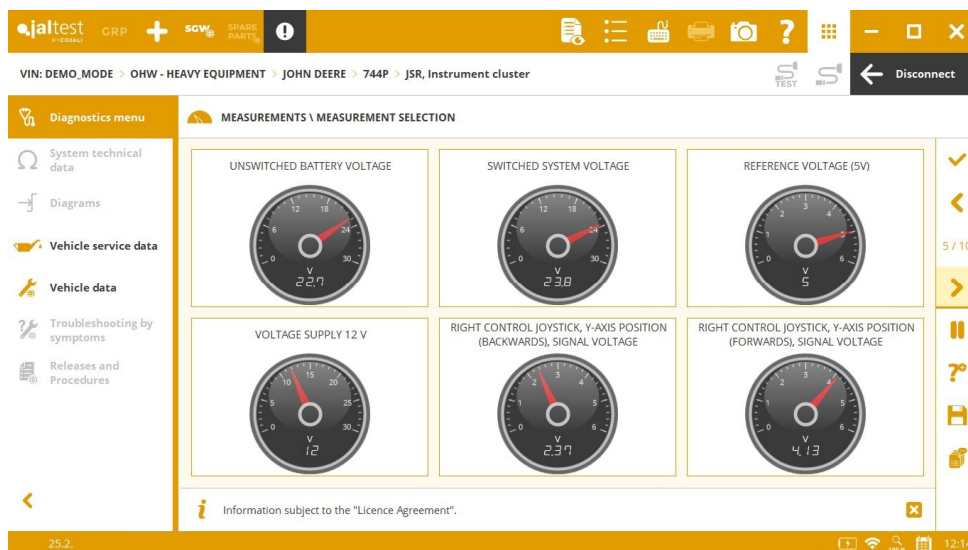


JCB

New wiring diagram configurations in **DieselMax 448 Stage V** (on SAE J1939) engine control system in **140X**, **150X** and **220X** models.

JOHN DEERE CE

- ⊕ **TCU** and **PDU** (on SAE J1939) systems for **G and P Series** wheel loaders.
- ⊕ **JSR**, **ATC**, **BHM** and **HVS** (on SAE J1939) systems for **P Series** wheel loaders.



LIEBHERR

- ⊕ **VIU** (on SAE J1939) gateway in **A Series**, **LH Series** and **R Series** models.

TEREX FINLAY

CATERPILLAR C-3.4B (on SAE J1939) engine control system in **595** and **870** models, diesel particulate filter maintenance reset, SCR catalytic converter maintenance reset, component replacement and exhaust gas aftertreatment system checks.

OHW - COMPACT EQUIPMENT

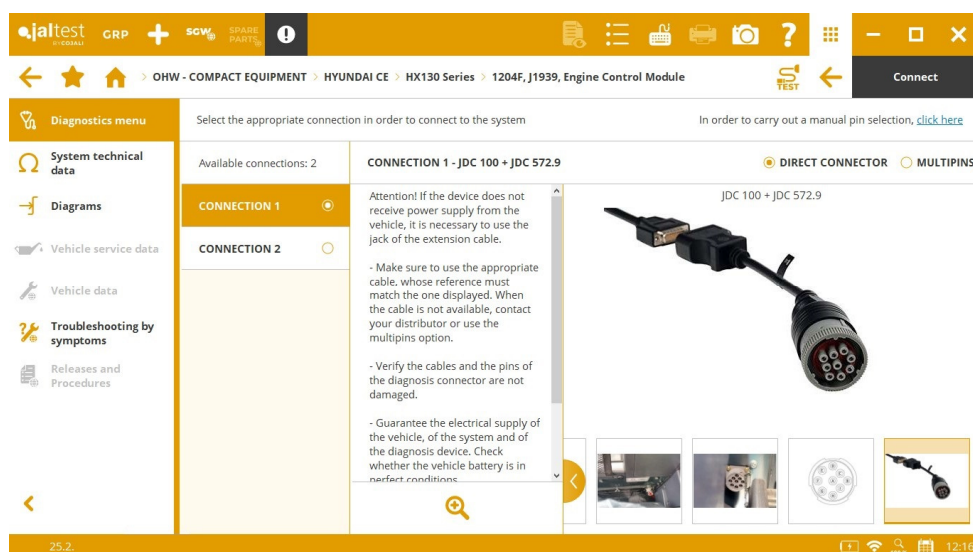
CATERPILLAR

MCM (on CDL) central computer in **900 Series** models, implement control valve calibration and hydrostatic module calibration.

C-3.4B (on SAE J1939) engine control system, diesel particulate filter maintenance reset, SCR catalytic converter maintenance reset, component replacement and exhaust gas aftertreatment system checks.

HYUNDAI CE

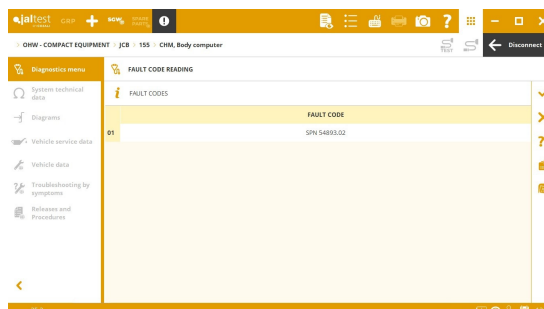
New **JDC 572.9** diagnostics cable.



⊕ **MCM** (on RS232) central computer for **Series 9** excavators.

JCB

- ⊕ **FC** (on SAE J1939) cooling system for telescopic wheel loaders.
- ⊕ **EHC** hydraulic system, **CHM** central computer, **CLUSTER** and **KEYPAD** instrument clusters and **JSR** and **JSL** electronic modules for skid-steer loaders.



CLUSTER (on SAE J1939) instrument cluster for telescopic wheel loaders, advanced operations in fault code clearance.

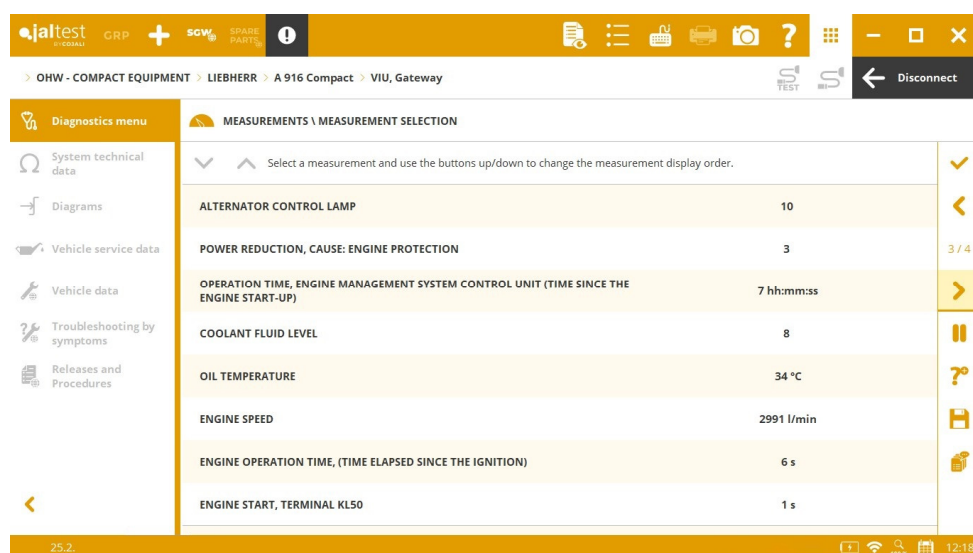
New wiring diagram configurations in **DieselMax 430 Stage V** (on SAE J1939) and **DieselMax 448 Stage V** (on SAE J1939) engine control system.

JOHN DEERE CE

- ⊕ **TCU** and **PDU** (on SAE J1939) systems for **G and P Series** wheel loaders.
- ⊕ **JSR**, **ATC**, **BHM** and **HVS** (on SAE J1939) systems for **P Series** wheel loaders.

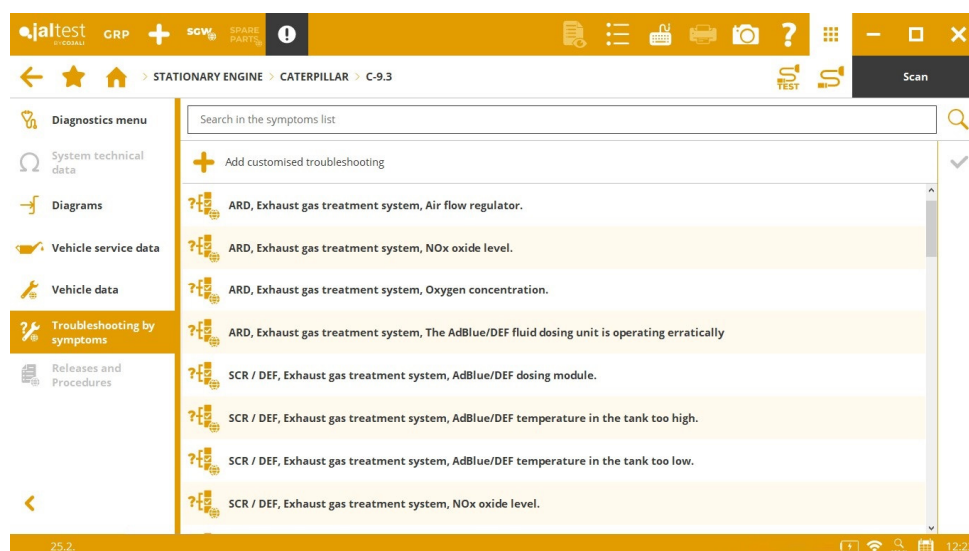
LIEBHERR

- ⊕ **VIU** (on SAE J1939) gateway in **A Series**, **LR Series**, **PR Series** and **R Series** models.



STATIONARYENGINE

In general, **fault code troubleshooting guides** have been added in several engine control systems and in exhaust gas aftertreatment systems.



CATERPILLAR

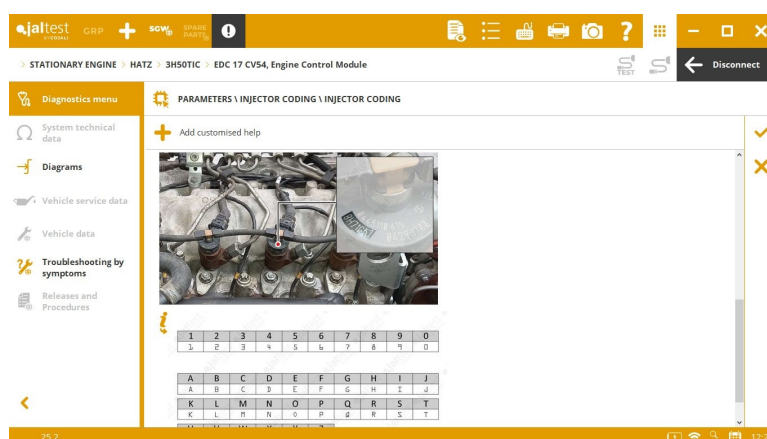
New wiring diagram configurations in **C-4.4** (on SAE J1939) engine control system.

IVECO FPT

New wiring diagram configurations in **EDC MD1 CS069 Stage V** (on SAE J1939) engine control system in **F34 (F5)** and **F36 (F5)** models.

HATZ

EDC17 C81 (on SAE J1939) engine control system, injector configuration.



JOHN DEERE

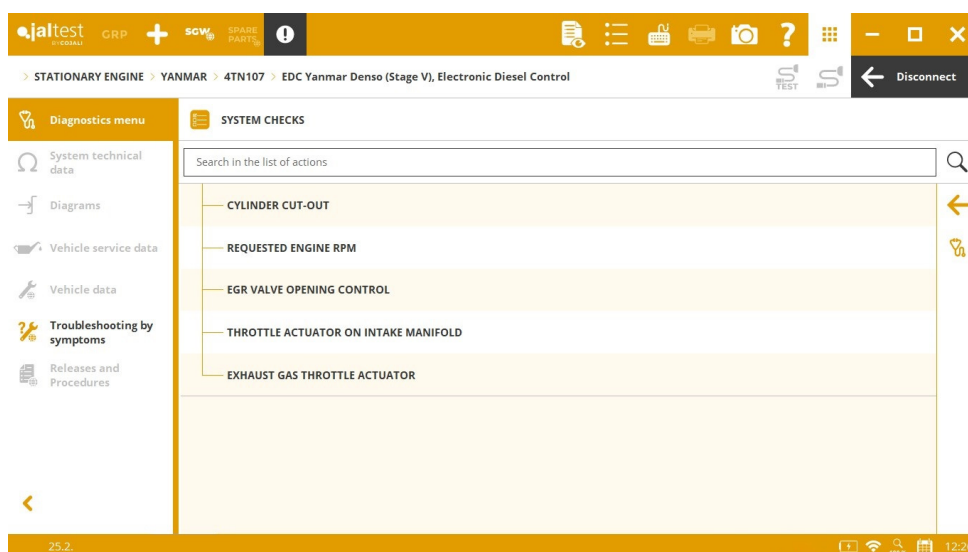
In general, **JOHN DEERE** engine technical data have been added.

MAN

New wiring diagram configurations in **EDC17 CV42** (on SAE J1939) engine control system.

YANMAR

⊕ **EDC Denso** engine control system in **4TN107** model.



MULTI-PURPOSE VEHICLE

In general, diagnostics coverage has been extended for engine control systems. It is important to note new functionalities in **EDC 17 C81** engine control system and in **HAKO** and **LADO** brands.