



# **TELEMATICS**

## INNOVATIONS 25.3



## ABOUT COJALI

Cojali S. L., based in Campo de Criptana, is a Spanish multinational manufacturer of components and electronics, which also develops solutions of advanced diagnostics, connectivity and remote diagnostics for commercial vehicles, agricultural equipment, OHW equipment, material handling equipment and vessels, as well as ISOBUS compatibility solutions for tractors and implements.

Thanks to the wide expertise in the development of on-board and workshop technology solutions, Cojali is actively working on data processing and analysis, being this a strategic business activity, which enables the implementation of improvement processes and the release of new products onto the market.

Finally, Cojali provides a comprehensive training offer, as well as complete solutions for technical support, aimed at ensuring the successful use of technology in the automotive industry.

Cojali S. L. has four subsidiaries: Cojali France, Cojali Italia, Cojali USA and Cojali India, and three sales offices in Germany, Turkey and Mexico.

COJALI ALWAYS LOOKS FORWARD WITH THE PURPOSE OF OFFERING CUTTING-EDGE TECHNOLOGY WITHIN THE AUTOMOTIVE INDUSTRY.



 **5%**  
R+D+I INVESTMENT

 **670**  
EMPLOYEES


 **4**  
SUBSIDIARIES

 **135**  
COUNTRIES

**FOLLOW US  
IN OUR SOCIAL MEDIA**



# INDEX

	New graphic interface	4
	Location	5
	Alarms	8
	Reports	9
	Sensors	13
	Maintenance	14

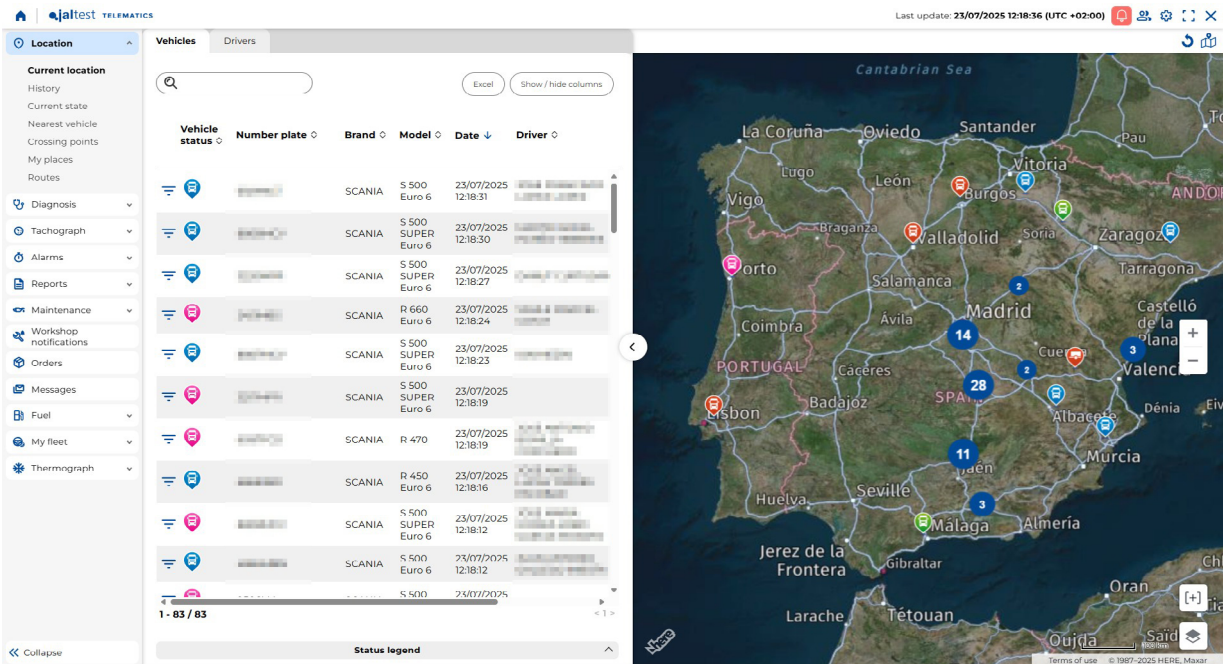


# NEW GRAPHIC INTERFACE

## Transition completed

Version 25.3 officially completes the transition to the new GUI. It should be noted that, as planned since version 25.1, the GUI design displayed by default will be the latest one with no other option. In addition, the access URL is always [telematics.jaltest.com](https://telematics.jaltest.com). We remind you of the planned transition:

- 25.1 will by default offer access to the **current** GUI with the possibility of switching between both.
- 25.2 will by default offer access to **new** GUI with the possibility of switching between both.
- 25.3 will by default offer the new GUI with **no option to switch back to the current GUI**.

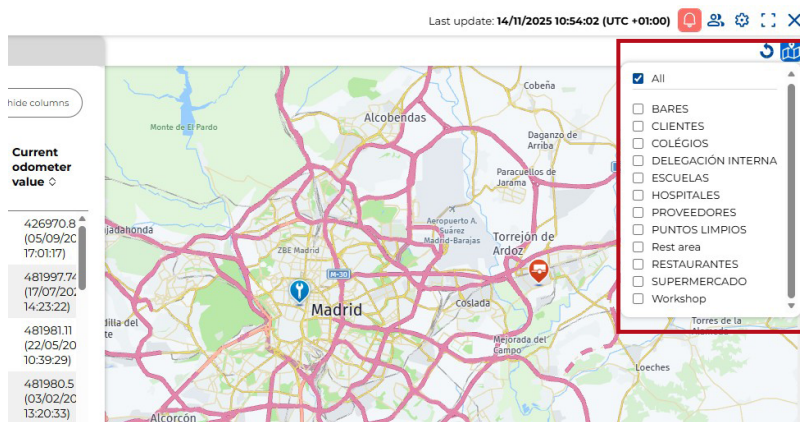




# LOCATION

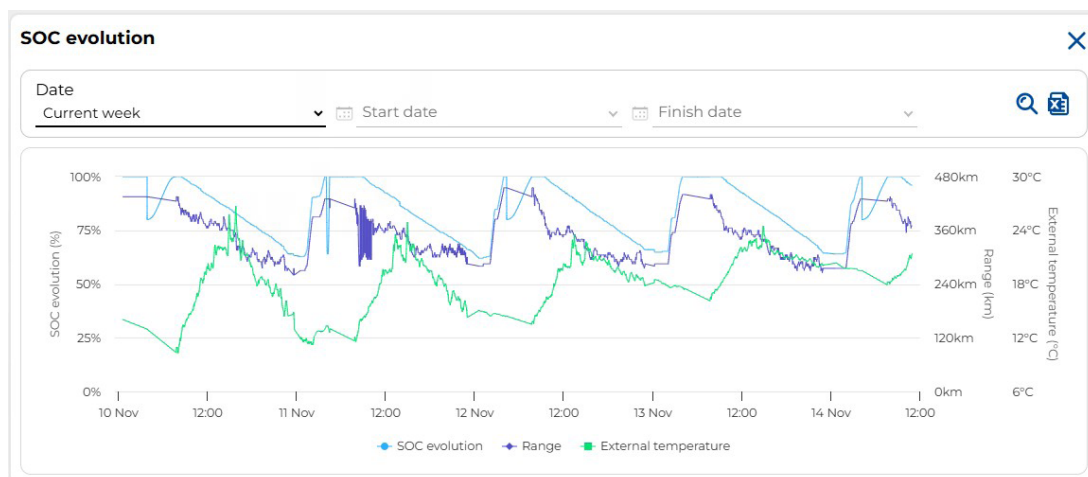
## 1. Filtering of “My places” on the map

By displaying the favourite places on the map, a new functionality is added to be able to filter the places displayed by category. This speeds up the search and location of places on the map.



## 2. EV view

The export to Excel of the data displayed in the “EV View” menu is enabled. In this way, it is possible to offer a report by dates in Excel format, including the fundamental variables of the electric vehicle.

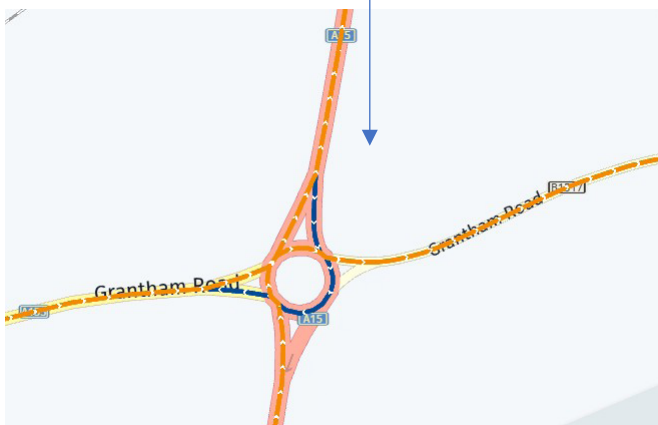
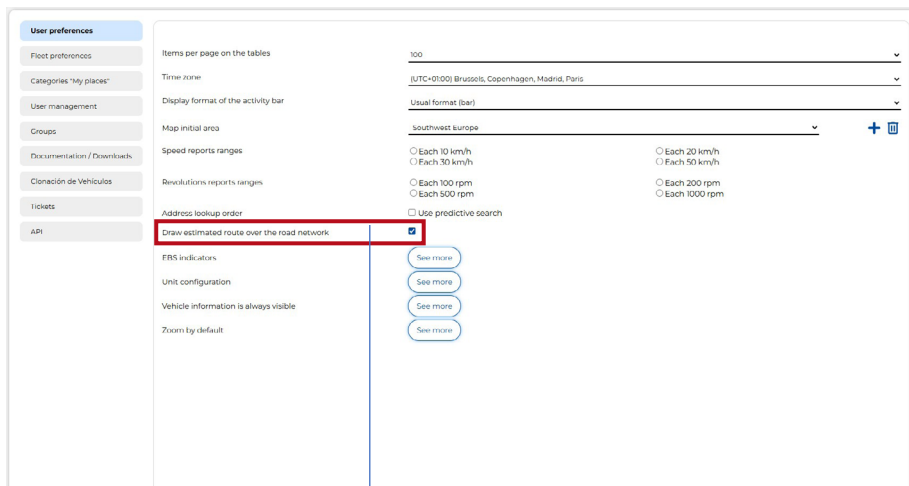




# LOCATION

## 3. Highest accuracy in route representation

The highest accuracy possible in route representation is an essential need in some sectors and/or situations. In order to meet this need, **a configuration that provides maximum detail in the route display** has been enabled. From 25.3 onwards, the option of configuring access to the **most accurate** route on the road network is offered.

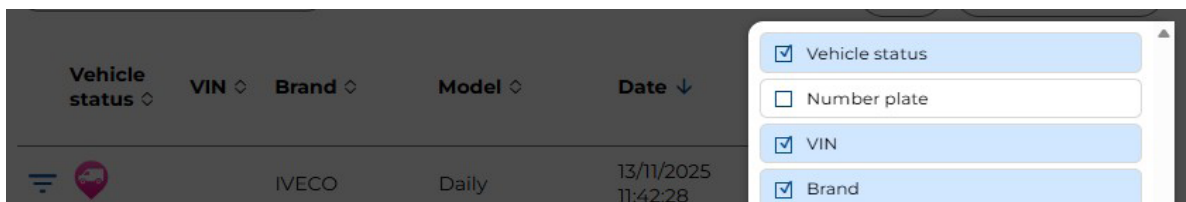




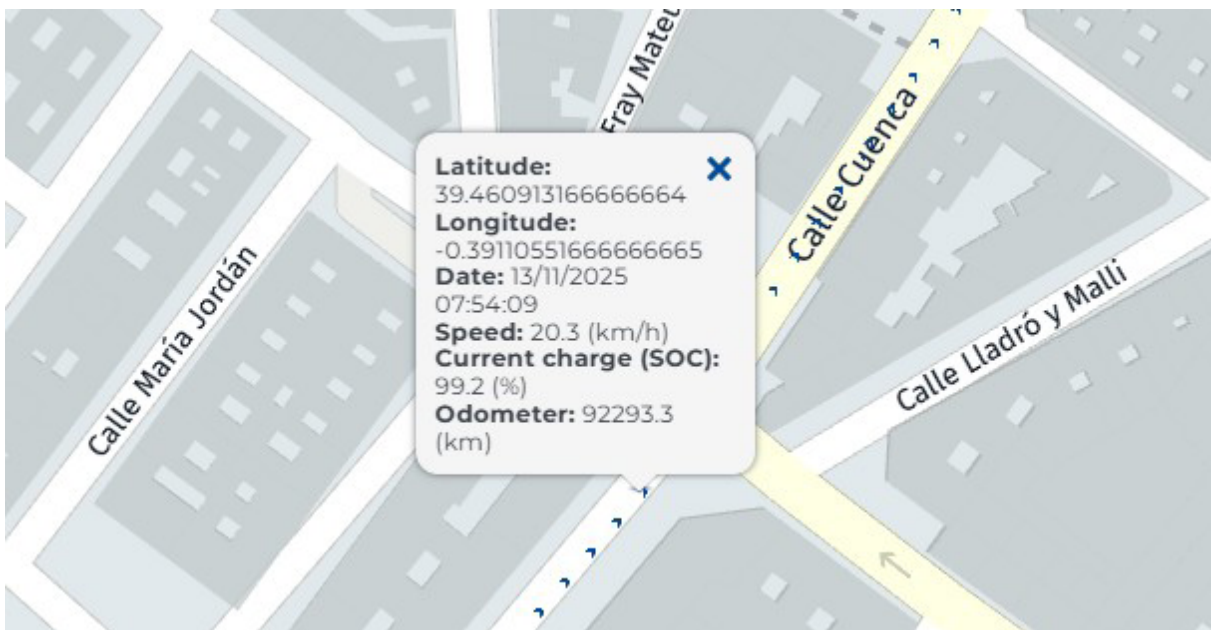
# LOCATION

## 4. Other improvements

- From 25.3 onwards, among the data displayed in the list of vehicles in current location, the VIN will also be available.



- Improved user experience when **refreshing location information**, maintaining the status of the user selection and display of detail.
- **Co-driving**: From this version onwards, both drivers present in the vehicle are shown, with the current driver in first place and the passenger in second place.
- **For electric vehicles**, continuing with the continuous integration of functionalities and improvements focused on this group of vehicles, the **SOC data is provided** when consulting and exporting the details of the positions during a trip:





# ALARMS

## 1. New option in the alarm configuration

From this version onwards, the alarms for FMS readings include the AdBlue/DEF level. **This enables the configuration of alarms for the AdBlue/DEF tank level** in a similar way as for the fuel tank.

**New alarm** [X]

**FMS/J1939 measurement selection**

FMS measurement Adblue/DEF tank ▾

**Condition**

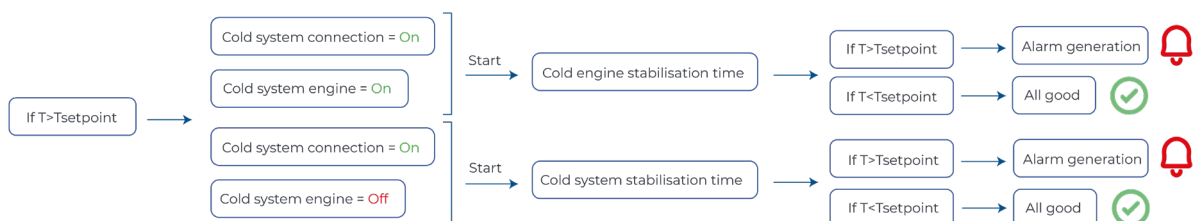
More than ▾ Value  %

## 2. Geolocation of alarms for active DTCs

**Improved alarm geolocation for active DTCs**, measurements obtained by remote diagnostics procedures and events highlighted during driving (idling, speeding, hard braking, PTO use, acceleration-braking and braking-acceleration).

## 3. Alarms for temperature above or below the limit

Improved criteria for generating alarms for temperature above or below the limit following the flow that can be summarised in the following image:

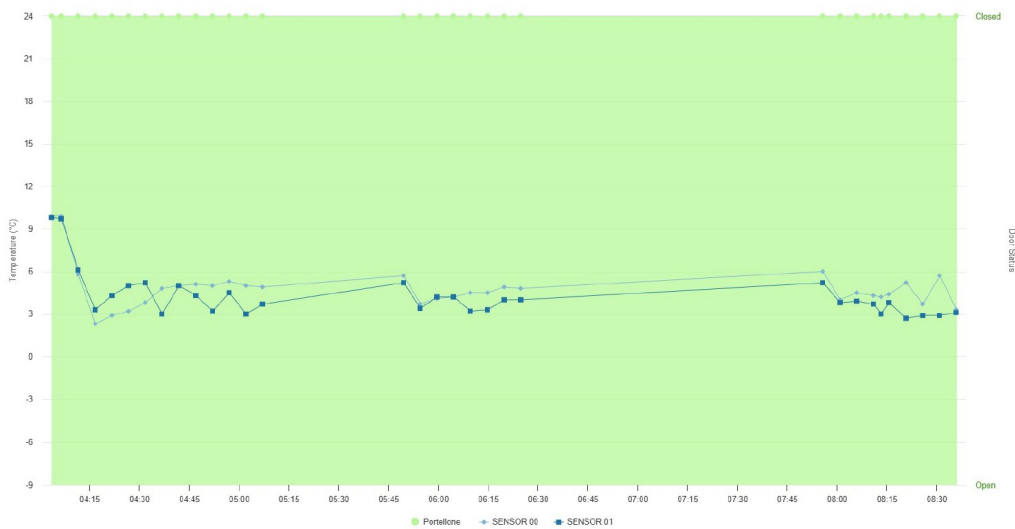




# REPORTS

## 1. Cold chain

**Improved export of the cold chain report:** from this version onwards, the temperature graph is included in the export.



## 2. “EBS not connected” report

In order to provide more information in the context of a trip without EBS, **the number plate of the tractor head during the trip in which the EBS disconnection was detected is included.** It should be noted that this functionality is subject to subscribing to the “Trailer ID” module. Otherwise, it will not be available.

**EBS not connected**  
Dates range: Current month

**Overview**

Number of occurrences in the selected period: 20426  
Number of total occurrences: 1057460

Search:

Number plate	Number of occurrences in the selected period	Number of total occurrences
99	99	1340

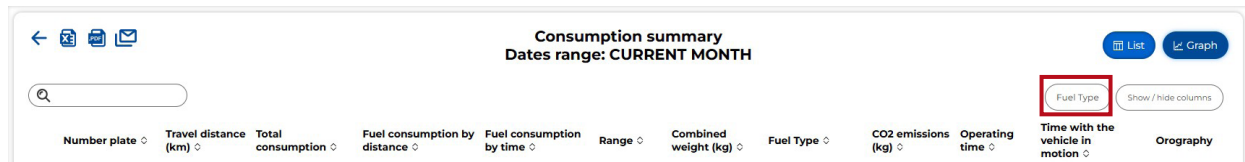
Trailer	Date	Address	POI	Location
---------	------	---------	-----	----------



# REPORTS

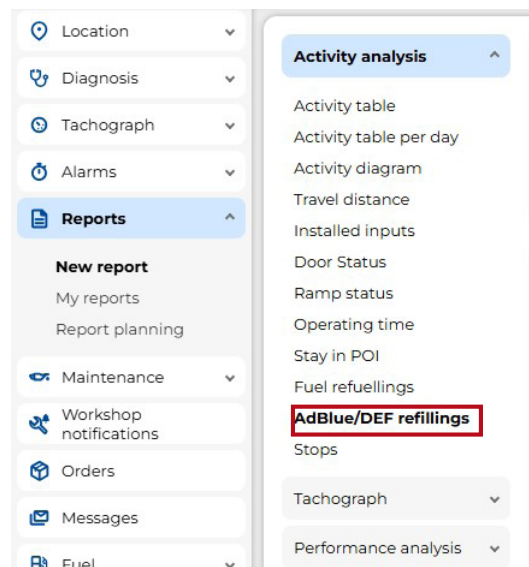
## 3. “Consumption” report

Nowadays, the number of fleets where vehicles with different fuel types coexist is constantly growing. To maintain the philosophy of a multi-brand and multi-vehicle solution, this version improves the consumption report by including a **new filter to display this report for each of the fuel types that coexist in the fleet.**



## 4. New report: AdBlue/DEF refillings

This version includes this new report to obtain the information on AdBlue/DEF refillings. It should be noted that the names of the reports have been adapted in order to avoid any confusion: the report called “Refuelling” is now called “Fuel refuellings”.

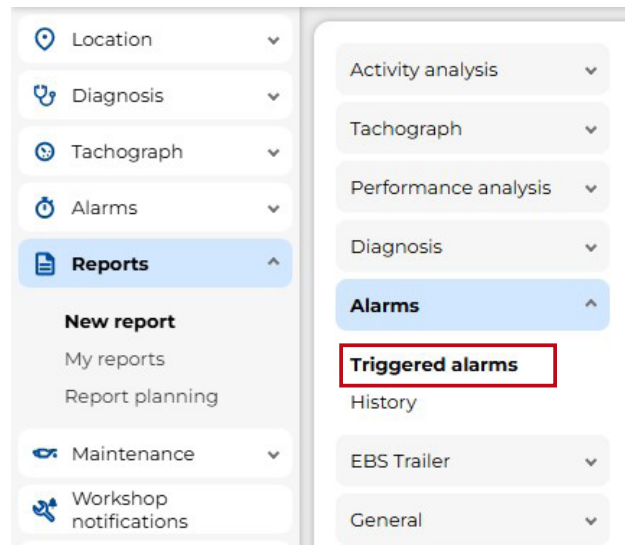




# REPORTS

## 5. New report: “Triggered alarms”

This version includes another new report to obtain information on the alarms that have been triggered and are pending processing. It is added under the “Alarms” heading, it includes all the alarms currently triggered in the system, taking into account the display restrictions of each user. It has additional filters by “Group” and “Priority”.

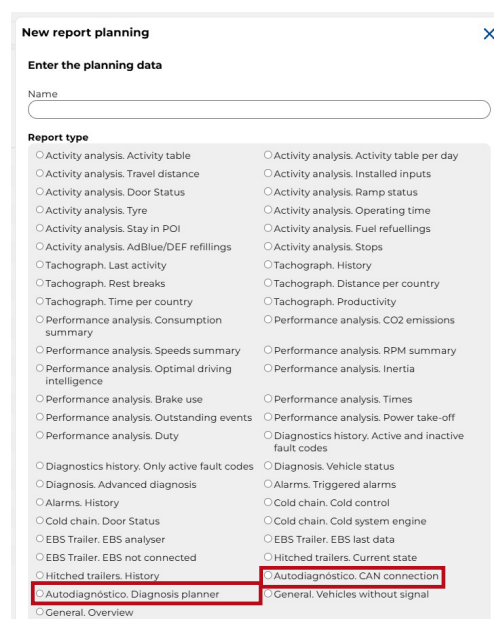


## 6. New planned reports

Reports focused on the autodiagnosis of the Jaltest Telematics solution performance. 25.3 has two new reports to help monitor the correct operation:

- CAN connection.
- Diagnostics planner.

The first one helps to identify problematic situations in the device connection to the vehicle CAN bus. The second one reports vehicles without planned diagnostics even if the functionality is subscribed.





# REPORTS

## 7. Time and distance per country

Time and total distance are added to the time per country and distance per country reports respectively.

The top screenshot displays the 'Distance per country' report for the current month. It features a search bar, a table with columns for 'Number plate', 'SPAIN', 'FRANCE', 'ITALY', 'PORTUGAL...', 'SAN MAR...', 'HOLY SE...', 'Distance without identified country', and 'Total'. The bottom screenshot displays the 'Time per country' report for the current month. It includes a 'Display mode' dropdown menu with 'Global view' selected and 'Day-to-day view' as an option. Below it is a search bar and a table with columns for 'Number plate', 'SPAIN', 'FRANCE', 'ITALY', 'PORTUGAL', 'SAN MAR...', 'HOLY SE...', 'Period without matched area', and 'Total'.

## 8 Electric vehicle

Improved consumption report for electric vehicles. The **net energy consumed is now included**. This is an attempt to **improve the criteria for comparing consumption between electric vehicles**:

- **Energy consumed**: it refers to the total energy consumed.
- **Energy recovered**: it represents the unit recovered by the vehicle during operation.
- **Net energy consumed**: it refers to the energy consumed exclusively from the battery, excluding the energy that the vehicle recovers.

This differentiation is subject to the measurement management of each manufacturer.

## 9. Other improvements

- In the "Travel distance" and "General" reports, **the distance travelled with cruise control activated is incorporated**.
- **Activity table: two new improvements** are added in 25.3:
  - The **map** with the **route travelled** during the trip is added.
  - Events due to **EBS disconnection in the case of semi-trailers** are added to the event section.
- **Diagnostics report**. It includes the following improvements:
  - It collects the **advanced diagnostics performed** in the selected period.
  - **Filters by action**.
  - The **user who executed the request** is added.
  - The **details of the actions** are included.



# SENSORS

## 1. Bus ramp monitoring

An electrical signal has been included in the configuration of this input, as a source of information to trigger typical ramp events, in addition to the FMS reading.

**Edit input** ✕

**Select the configuration type**  
 FMS  
 Cable-Sensor

**Telematic device**

**Associated alarm**  
 YES  
 NO



# MAINTENANCE

## 1. Notifications to the workshop

In the workshop notifications conclusion, the **option of indicating the components affected** has been incorporated, regardless of the channel by which the notification was generated.

### Edit maintenance

1- Maintenance

Select the maintenance concept

2- Vehicle data

Vehicle: 000000139

Last maintenance action

Date: 19/11/2025

Odometer value (km):

Operating hours: 10895.05

Number of occurrences:

Next maintenance

Date: 19/11/2026

Odometer value (km):

Operating hours:

3- Other data

Price (€ (EUR)):

Invoice No.:

4- Comment

5- Components affected by maintenance task

Name	Reference	Brand	Wearing (%)	Comments
Oil		Home	80	Oil Change OK

1 - 1 / 1

Cancel Save



Cojali, S. L.  
Avenida de la Industria, s/n  
13610 Campo de Criptana - Spain  
Teléfono: 00.34.926.278.181  
e-mail: [jaltest-telematics@jaltest.com](mailto:jaltest-telematics@jaltest.com)  
[jaltest.com](http://jaltest.com); [cojali.com](http://cojali.com)